

Cynomolgus ACE2/ACEH Protein

Cat. No. ACE-CM401

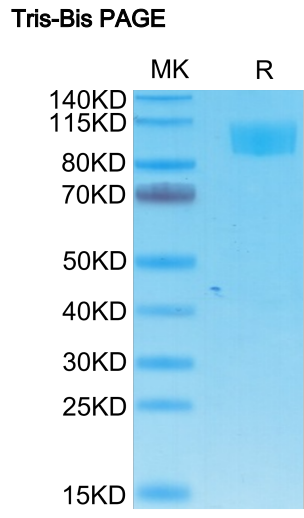
Description	
Source	Recombinant Cynomolgus ACE2/ACEH Protein is expressed from Expi293 with His tag and Avi tag at the C-terminal. It contains Gln18-Val739.
Accession	A0A2K5X283
Molecular Weight	The protein has a predicted MW of 86.5 kDa. Due to glycosylation, the protein migrates to 95-110 kDa based on Tris-Bis PAGE result.
Endotoxin	Less than 1EU per µg by the LAL method.
Purity	> 95% as determined by Tris-Bis PAGE > 95% as determined by HPLC

Formulation and Storage	
Formulation	Supplied as 0.22µm filtered solution in PBS (pH 7.4). Please dilute to the desired concentration according to the concentration of the solution shown on the product label.
Storage	Valid for 12 months from date of receipt when stored at -80°C. Recommend to aliquot the protein into smaller quantities for optimal storage. Please do not repeated freeze-thaw cycles.

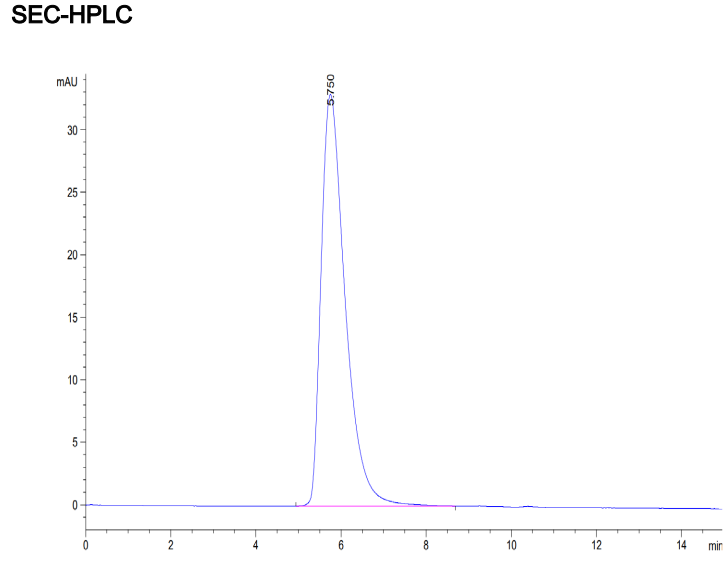
Background

ACE2 (Angiotensin I Converting Enzyme 2) is a Protein Coding gene. Diseases associated with ACE2 include Severe Acute Respiratory Syndrome and Neurogenic Hypertension. The protein encoded by this gene belongs to the angiotensin-converting enzyme family of dipeptidyl carboxypeptidases and has considerable homology to human angiotensin 1 converting enzyme. This secreted protein catalyzes the cleavage of angiotensin I into angiotensin 1-9, and angiotensin II into the vasodilator angiotensin 1-7.

Assay Data



Cynomolgus ACE2 on Tris-Bis PAGE under reduced condition. The purity is greater than 95%.



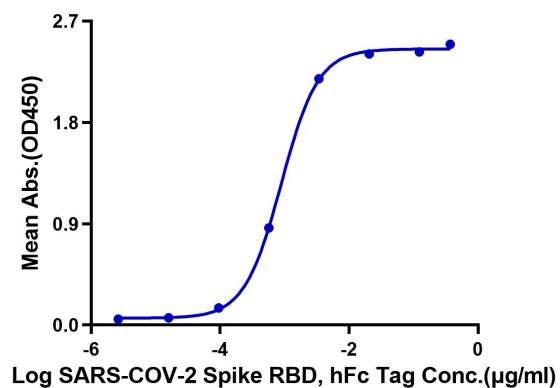
The purity of Cynomolgus ACE2 is greater than 95% as determined by SEC-HPLC.

Assay Data

ELISA Data

Cynomolgus ACE2, His Tag ELISA

0.5µg Cynomolgus ACE2, His Tag Per Well



Immobilized Cynomolgus ACE2, His Tag at 5µg/ml (100µl/well) on the plate. Dose response curve for SARS-COV-2 Spike RBD, hFc Tag with the EC50 of 0.9ng/ml determined by ELISA.