

Human ADAM8 Protein

Cat. No. ADM-HM108



Description

Source	Recombinant Human ADAM8 Protein is expressed from HEK293 with His tag at the C-Terminus. It contains Ile17-Pro655.
Accession	P78325
Molecular Weight	The protein has a predicted MW of 70.9 kDa. The protein migrates to 55-70 kDa based on Bis-Tris PAGE result.
Endotoxin	Less than 1EU per µg by the LAL method.
Purity	> 95% as determined by Bis-Tris PAGE > 95% as determined by HPLC

Formulation and Storage

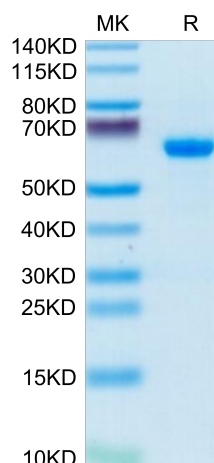
Formulation	Supplied as 0.22µm filtered solution in 50mM Tris, 150mM NaCl (pH 7.5).
Storage	Valid for 12 months from date of receipt when stored at -80°C. Recommend to aliquot the protein into smaller quantities for optimal storage. Please minimize freeze-thaw cycles.

Background

A Disintegrin And Metalloproteinase (ADAM) proteases constitute a family of multifunctional, membrane-bound proteins with traditional sheddase functions. Their protumorigenic potential has been attributed to both, essential (ADAM10 and ADAM17) and 'dispensable' ADAM proteases (ADAM8, 9, 12, 15, and 19). Of specific interest in this review is the ADAM proteinase ADAM8 that has been identified as a significant player in aggressive malignancies including breast, pancreatic, and brain cancer.

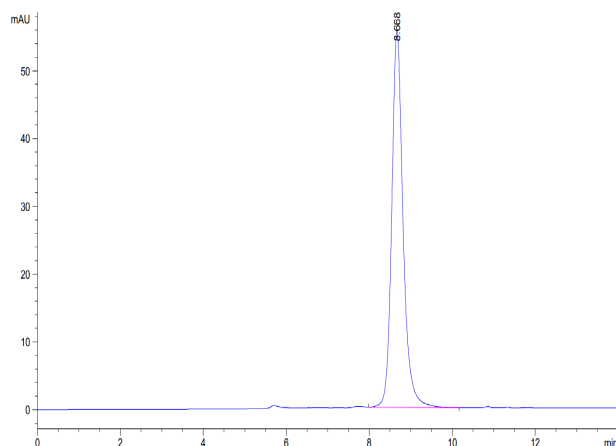
Assay Data

Bis-Tris PAGE



Human ADAM8 on Bis-Tris PAGE under reduced condition. The purity is greater than 95%.

SEC-HPLC



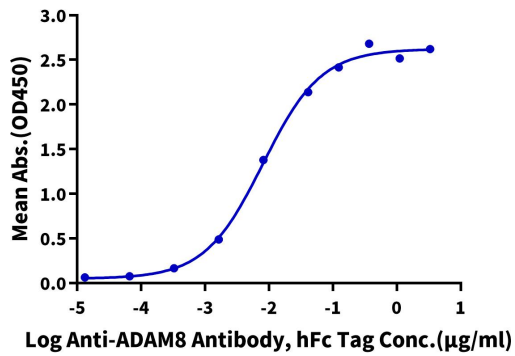
The purity of Human ADAM8 is greater than 95% as determined by SEC-HPLC.

Assay Data

ELISA Data

Human ADAM8, His Tag ELISA

0.05µg Human ADAM8, His Tag Per Well



Immobilized Human ADAM8, His Tag at 0.5µg/ml (100µl/well) on the plate. Dose response curve for Anti-ADAM8 Antibody, hFc Tag with the EC50 of 8.1ng/ml determined by ELISA.

Bioactivity Data

Measured by its ability to cleave a fluorogenic peptide substrate Mca-PLAQAV-Dpa-RSSSR-NH2. The specific activity is >1 pmol/min/µg