

Mouse ADAM8 Protein

Cat. No. ADM-MM108



Description

Source	Recombinant Mouse ADAM8 Protein is expressed from HEK293 with His tag at the C-Terminus. It contains Pro17-Ser658.
Accession	Q05910
Molecular Weight	The protein has a predicted MW of 71.7 kDa. The protein migrates to 55-70 kDa based on Bis-Tris PAGE result.
Endotoxin	Less than 1EU per µg by the LAL method.
Purity	> 95% as determined by Bis-Tris PAGE > 95% as determined by HPLC

Formulation and Storage

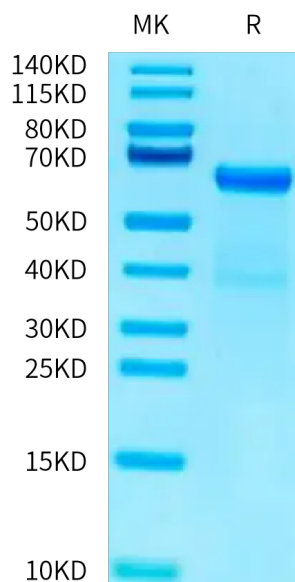
Formulation	Lyophilized from 0.22µm filtered solution in PBS (pH 7.4). Normally 8% trehalose is added as protectant before lyophilization.
Reconstitution	Centrifuge the tube before opening. Reconstituting to a concentration more than 100 µg/ml is recommended. Dissolve the lyophilized protein in distilled water.
Storage	-20 to -80°C for 12 months as supplied from date of receipt. -80°C for 3-6 months after reconstitution. 2-8°C for 2-7 days after reconstitution. Recommend to aliquot the protein into smaller quantities for optimal storage. Please minimize freeze-thaw cycles.

Background

A Disintegrin And Metalloproteinase (ADAM) proteases constitute a family of multifunctional, membrane-bound proteins with traditional sheddase functions. Their protumorigenic potential has been attributed to both, essential (ADAM10 and ADAM17) and 'dispensable' ADAM proteases (ADAM8, 9, 12, 15, and 19). Of specific interest in this review is the ADAM proteinase ADAM8 that has been identified as a significant player in aggressive malignancies including breast, pancreatic, and brain cancer.

Assay Data

Bis-Tris PAGE



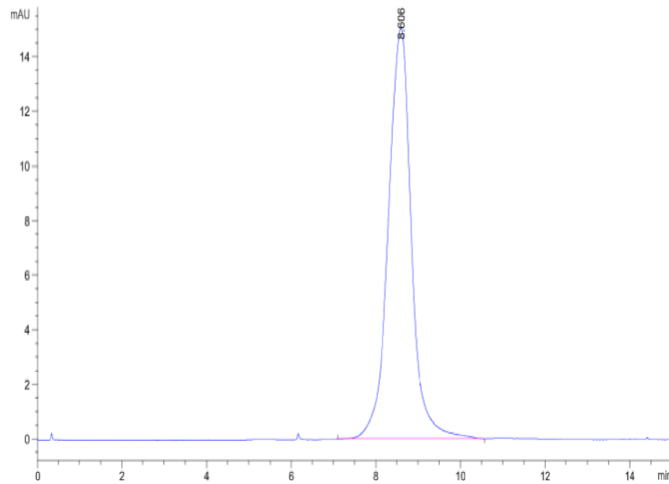
Mouse ADAM8 on Bis-Tris PAGE under reduced condition. The purity is greater than 95%.

SEC-HPLC

Mouse ADAM8 Protein

Cat. No. ADM-MM108

Assay Data



The purity of Mouse ADAM8 is greater than 95% as determined by SEC-HPLC.

Bioactivity Data

Measured by its ability to cleave a fluorogenic peptide substrate Mca-PLAQAV-Dpa-RSSSR-NH₂. The specific activity is > 0.4 pmol/min/μg.