

Canine AFP Protein

Cat. No.    AFP-DM101

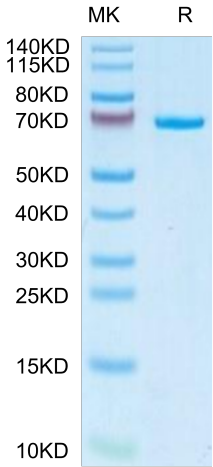


Description	
Source	Recombinant Canine AFP Protein is expressed from HEK293 with His tag at the C-Terminus. It contains Arg19-Val609.
Accession	Q8MJU5
Molecular Weight	The protein has a predicted MW of 67.71 kDa. Due to glycosylation, the protein migrates to 68-70 kDa based on Tris-Bis PAGE result.
Endotoxin	Less than 1EU per µg by the LAL method.
Purity	> 95% as determined by Tris-Bis PAGE > 95% as determined by HPLC

Formulation and Storage	
Formulation	Lyophilized from 0.22µm filtered solution in PBS (pH 7.4). Normally 8% trehalose is added as protectant before lyophilization.
Reconstitution	Centrifuge the tube before opening. Reconstituting to a concentration more than 100 µg/ml is recommended. Dissolve the lyophilized protein in distilled water.
Storage	-20 to -80°C for 12 months as supplied from date of receipt. -20 to -80°C for 3-6 months in unopened state after reconstitution. 2-8°C for 2-7 days after reconstitution. Recommend to aliquot the protein into smaller quantities for optimal storage. Please minimize freeze-thaw cycles.

Background	
Alpha-fetoprotein is a shuttle protein that delivers nutrients through receptor-mediated endocytosis to embryonic cells. In adults, alpha-fetoprotein can shuttle drugs into alpha-fetoprotein receptor-positive myeloid-derived suppressor, regenerating and also cancer cells. Drugs with high-binding affinity to alpha-fetoprotein can activate or deplete targeted cells. Myeloid-derived suppressor cells activation leads to immune suppression that can be used for treating autoimmune diseases.	

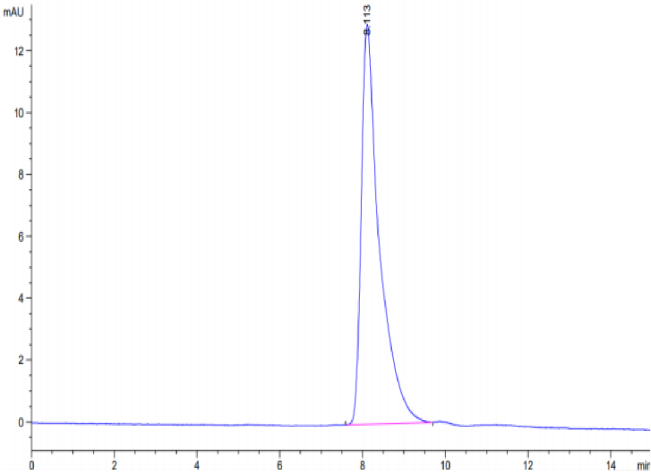
Assay Data	
Tris-Bis PAGE	



Canine AFP on Tris-Bis PAGE under reduced condition. The purity is greater than 95%.

SEC-HPLC

Assay Data



The purity of Canine AFP is greater than 95% as determined by SEC-HPLC.