

# Human ALPL Protein

Cat. No. ALP-HM101



## Description

<b>Source</b>	Recombinant Human ALPL Protein is expressed from HEK293 with His tag at the C-terminus. It contains Leu18-Ser501.
<b>Accession</b>	P05186-1
<b>Molecular Weight</b>	The protein has a predicted MW of 54.40 kDa. Due to glycosylation, the protein migrates to 60-70 kDa based on Tris-Bis PAGE result.
<b>Endotoxin</b>	Less than 1EU per µg by the LAL method.
<b>Purity</b>	> 95% as determined by Tris-Bis PAGE > 95% as determined by HPLC

## Formulation and Storage

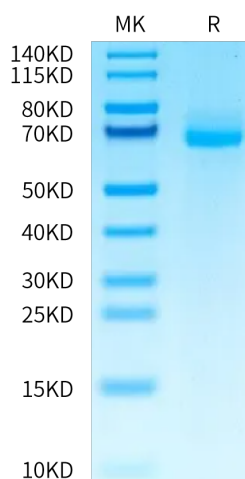
<b>Formulation</b>	Supplied as 0.22 µm filtered solution in 20mM HEPES, 150mM NaCl, 20% glycerol (pH 7.5).
<b>Storage</b>	Valid for 12 months from date of receipt when stored at -80°C. Recommend to aliquot the protein into smaller quantities for optimal storage. Please minimize freeze-thaw cycles.

## Background

Alkaline phosphatase can be considered "our favorite enzyme" for reasons apparent to those who diagnose and treat metabolic bone diseases or who study skeletal biology. Few might know, however, that alkaline phosphatase likely represents the most frequently assayed enzyme in all of medicine. Elevated activity in the circulation is universally recognized as a marker for skeletal or hepatobiliary disease.

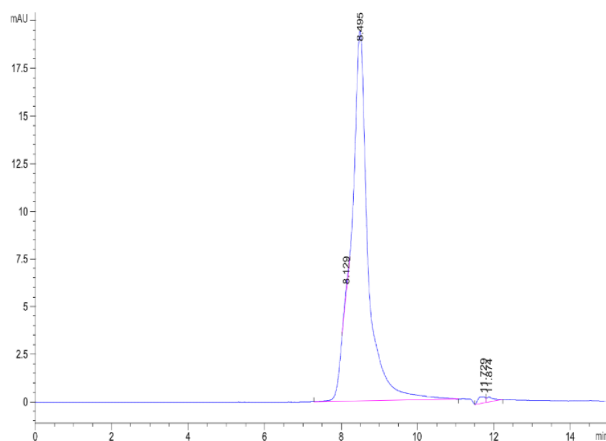
## Assay Data

### Tris-Bis PAGE



Human ALPL on Tris-Bis PAGE under reduced condition. The purity is greater than 95%.

### SEC-HPLC



The purity of Human ALPL is greater than 95% as determined by SEC-HPLC.