

Human APLP2 Protein

Cat. No. ALP-HM102



Description

Source	Recombinant Human APLP2 Protein is expressed from Expi293 with His tag at the C-terminal. It contains Gly32-Ser692.
Accession	Q06481-1
Molecular Weight	The protein has a predicted MW of 77.16 kDa. Due to glycosylation, the protein migrates to 85-100 kDa based on Tris-Bis PAGE result.
Endotoxin	Less than 1EU per μg by the LAL method.
Purity	> 95% as determined by Tris-Bis PAGE > 95% as determined by HPLC

Formulation and Storage

Formulation	Supplied as 0.22 μm filtered solution in PBS (pH 7.4). Please dilute to the desired concentration according to the concentration of the solution shown on the product label.
Storage	Valid for 12 months from date of receipt when stored at -80°C. Recommend to aliquot the protein into smaller quantities for optimal storage. Please do not repeated freeze-thaw cycles.

Background

Amyloid β precursor-like protein 2 (APLP2) has been determined to serve an important role in the progression of a number of cancer types. APLP2 expression was significantly associated with disease-specific survival ($P < 0.001$). APLP2 may be used to potentially predict patient prognosis, and to guide clinical diagnosis and treatment in CCRCC.

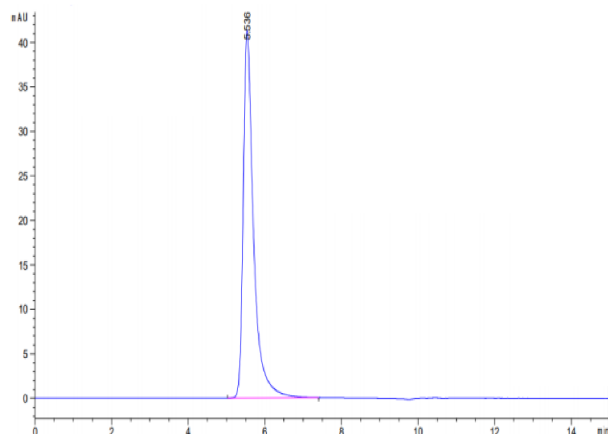
Assay Data

Tris-Bis PAGE



Human APLP2 on Tris-Bis PAGE under reduced condition. The purity is greater than 95%.

SEC-HPLC



The purity of Human APLP2 is greater than 95% as determined by SEC-HPLC.