

# Human Alpha Synuclein Pre-formed Fibrils/PFF Protein



Cat. No. ALS-HE00F

## Description

**Source** Recombinant Human Alpha Synuclein Pre-formed Fibrils/PFF Protein is expressed from E.coli without tag. It contains Met1-Ala140.

**Accession** P37840-1

**Molecular Weight** The Alpha Synuclein Monomer Protein has a predicted MW of 14.5 kDa.

**Endotoxin** Less than 0.1 EU per µg by the LAL method.

## Formulation and Storage

**Formulation** Supplied as 0.22 µm filtered solution in PBS (pH 7.4).

**Storage** Valid for 12 months from date of receipt when stored at -80°C. Do not store PFF at 4°C. Recommend to aliquot the PFF protein into smaller quantities for optimal storage. Please minimize freeze-thaw cycles.

## Usage

### Recommended Usage Guidelines for PFF

- Thawing: Thaw PFF at room temperature.
- Aliquoting: Recommend to aliquot PFF into single-use tubes. As PFF are provided as a suspension, thoroughly pipette up and down before aliquoting to ensure sample homogeneity.
- Storage Condition: Store aliquots at -80°C. Do not store at 4°C. Please avoid unnecessary freeze thaw, freeze-thaw cycles will degrade PFF by dissociating the fibrils and causing non-specific aggregates.
- Sonication: Prior to in vitro or in vivo use, sonication is applied to prepare fibrils with a length of ≤ 50 nm. Longer fibrils result in reduced or absent toxicity. For sonication equipment selection, either a probe sonicator or bath sonicators can be used, please refer to the respective manuals for parameter settings.

## Background

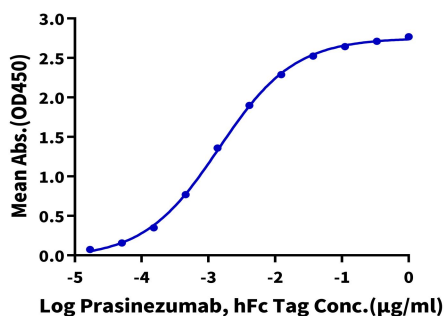
Abnormal forms of α-syn trigger selective and progressive neuronal death through mitochondrial impairment, lysosomal dysfunction, and alteration of calcium homeostasis not only in PD but also in other α-syn-related neurodegenerative disorders such as dementia with Lewy bodies, multiple system atrophy, pure autonomic failure, and REM sleep behavior disorder.

## Assay Data

### ELISA Data

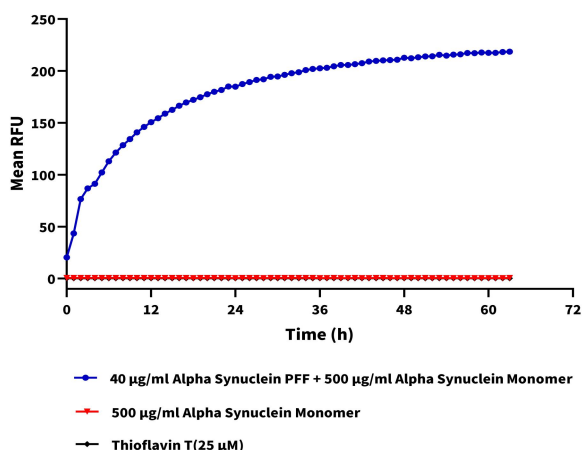
#### Human Alpha Synuclein PFF, No Tag ELISA

0.05µg Human Alpha Synuclein PFF, No Tag Per Well



Immobilized Human Alpha Synuclein PFF, No Tag at 0.5µg/ml (100µl/well) on the plate. Dose response curve for Prasinumab, hFc Tag with the EC50 of 1.5ng/ml determined by ELISA.

### ThT Assay



Thioflavin T emission intensity increases progressively over time upon incubation of Alpha Synuclein Monomer with Alpha Synuclein Pre-formed Fibrils. Fluorescence signals were detected with a microplate reader at an excitation wavelength of 450nm and an emission wavelength of 485nm.

For Research Use Only