

Human ANGPTL7/CDT6 Protein

Cat. No. ANG-HM407

Description

| | |
|-------------------------|--|
| Source | Recombinant Human ANGPTL7/CDT6 Protein is expressed from HEK293 with His and Avi tag at the C-Terminus. It contains Gln27-Pro346. |
| Accession | O43827 |
| Molecular Weight | The protein has a predicted MW of 40.2 kDa. Due to glycosylation, the protein migrates to 35-40 kDa based on Tris-Bis PAGE result. |
| Endotoxin | Less than 1EU per µg by the LAL method. |
| Purity | > 90% as determined by Tris-Bis PAGE > 95% as determined by HPLC |

Formulation and Storage

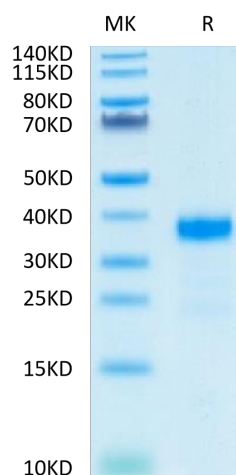
| | |
|-----------------------|---|
| Formulation | Lyophilized from 0.22µm filtered solution in PBS (pH 7.4). Normally 8% trehalose is added as protectant before lyophilization. |
| Reconstitution | Centrifuge the tube before opening. Reconstituting to a concentration more than 100 µg/ml is recommended. Dissolve the lyophilized protein in distilled water. |
| Storage | -20 to -80°C for 12 months as supplied from date of receipt. -20 to -80°C for 3-6 months in unopened state after reconstitution. 2-8°C for 2-7 days after reconstitution. Recommend to aliquot the protein into smaller quantities for optimal storage. Please minimize freeze-thaw cycles. |

Background

Angiopoietin-like 7 (ANGPTL7), also known as Corneal-Derived Transcript 6 (CDT6), is a secreted glycoprotein that is structurally related to the angiopoietins. Members of this protein family contain an N-terminal coiled coil domain and a C-terminal fibrinogen-like domain. ANGPTL7 is expressed in the corneal stroma, trabecular meshwork, and sclera and is elevated in glaucoma aqueous humor. Its production is upregulated in trabecular meshwork cells by glucocorticoids and TGF-beta and in cartilage by TNF-alpha.

Assay Data

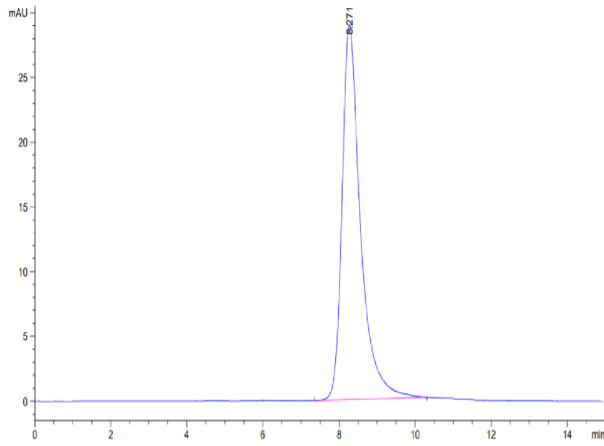
Tris-Bis PAGE



Human ANGPTL7 on Tris-Bis PAGE under reduced condition. The purity is greater than 90%.

SEC-HPLC

Assay Data



The purity of Human ANGPTL7 is greater than 95% as determined by SEC-HPLC.