

Human ANGPTL2/Angiopoietin-like 2 Protein

Cat. No. ANG-HM4L2

Description

Source	Recombinant Human ANGPTL2/Angiopoietin-like 2 Protein is expressed from Expi293 with His tag and Avi tag at the C-terminal. It contains Thr260-His493.
Accession	Q9UKU9-1
Molecular Weight	The protein has a predicted MW of 30.1 kDa. Due to glycosylation, the protein migrates to 31-35 kDa based on Tris-Bis PAGE result.
Endotoxin	Less than 1EU per µg by the LAL method.
Purity	> 95% as determined by Tris-Bis PAGE > 95% as determined by HPLC

Formulation and Storage

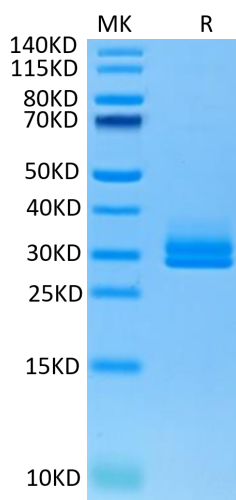
Formulation	Supplied as 0.22µm filtered solution in PBS (pH 7.4). Please dilute to the desired concentration according to the concentration of the solution shown on the product label.
Storage	Valid for 12 months from date of receipt when stored at -80°C. Recommend to aliquot the protein into smaller quantities for optimal storage. Please do not repeated freeze-thaw cycles.

Background

Angiopoietin-like 2 (ANGPTL2) is a proinflammatory protein belonging to the angiopoietin-like family. ANGPTL2 is secreted and detected in the systemic circulation. Different observational clinical studies reported that circulating levels of ANGPTL2 increase significantly in various chronic inflammatory diseases and showed associations between ANGPTL2 levels and diagnosis and/or prognosis of cardiovascular diseases, diabetes, chronic kidney disease, and various types of cancers.

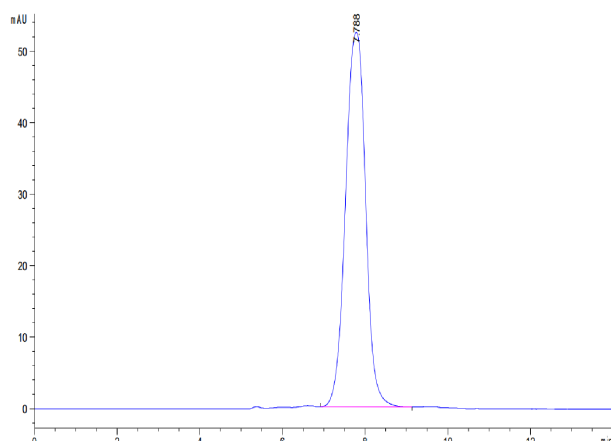
Assay Data

Tris-Bis PAGE



Human ANGPTL2 on Tris-Bis PAGE under reduced condition. The purity is greater than 95%.

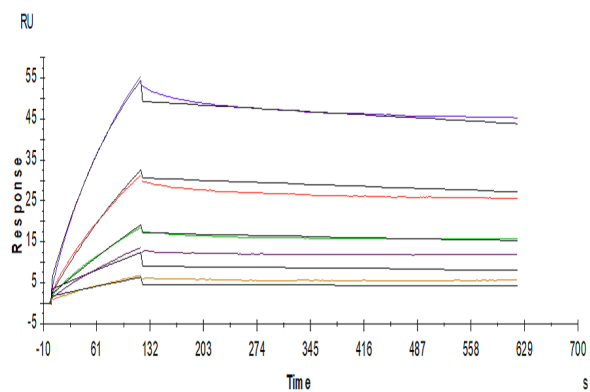
SEC-HPLC



The purity of Human ANGPTL2 is greater than 95% as determined by SEC-HPLC.

Assay Data

SPR Data



Human LILRB2, hFc Tag captured on Protein A chip, can bind Human ANGPTL2, His Tag with an affinity constant of 0.14 μ M as determined in a SPR assay(Biacore T200).