

Biotinylated Cynomolgus Alkaline Phosphatase (Placental type) /ALPP Protein (Primary Amine Labeling)



Cat. No. APE-CM102B

Description

Source	Recombinant Biotinylated Cynomolgus Alkaline Phosphatase (Placental type) /ALPP Protein (Primary Amine Labeling) is expressed from HEK293 with His tag at the C-terminus. It contains Ile21-Thr503.
Accession	XP_045223825.1
Molecular Weight	The protein has a predicted MW of 53.69 kDa. Due to glycosylation, the protein migrates to 57-70 kDa based on Tris-Bis PAGE result.
Endotoxin	Less than 1EU per µg by the LAL method.
Purity	> 95% as determined by Tris-Bis PAGE > 95% as determined by HPLC

Formulation and Storage

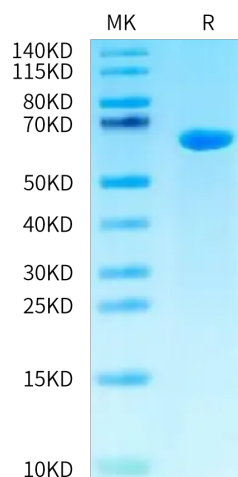
Formulation	Lyophilized from 0.22 µm filtered solution in 25mM Tris, 100mM NaCl, 1mM MgCl ₂ (pH 7.5). Normally 8% trehalose is added as protectant before lyophilization.
Reconstitution	Centrifuge the tube before opening. Reconstituting to a concentration more than 100 µg/ml is recommended. Dissolve the lyophilized protein in distilled water.
Storage	-20 to -80°C for 12 months as supplied from date of receipt. -80°C for 3-6 months after reconstitution. 2-8°C for 2-7 days after reconstitution. Recommend to aliquot the protein into smaller quantities for optimal storage. Please minimize freeze-thaw cycles.

Background

Alkaline phosphatase can be considered "our favorite enzyme" for reasons apparent to those who diagnose and treat metabolic bone diseases or who study skeletal biology. Few might know, however, that alkaline phosphatase likely represents the most frequently assayed enzyme in all of medicine. Elevated activity in the circulation is universally recognized as a marker for skeletal or hepatobiliary disease.

Assay Data

Tris-Bis PAGE



Biotinylated Cynomolgus ALPP on Tris-Bis PAGE under reduced condition. The purity is greater than 95%.

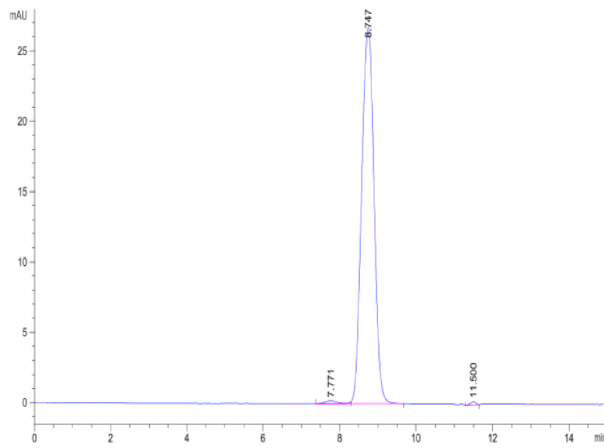
SEC-HPLC

**Biotinylated Cynomolgus Alkaline Phosphatase (Placental type) /ALPP Protein
(Primary Amine Labeling)**



Cat. No. APE-CM102B

Assay Data



The purity of Biotinylated Cynomolgus ALPP is greater than 95% as determined by SEC-HPLC.

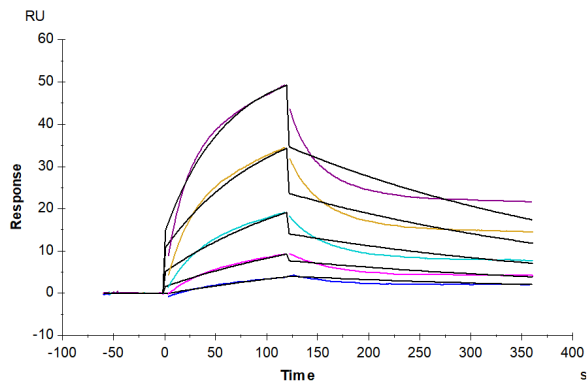
Biotinylated Cynomolgus Alkaline Phosphatase (Placental type) /ALPP Protein (Primary Amine Labeling)



Cat. No. APE-CM102B

Assay Data

SPR Data



Anti-Alkaline Phosphatase Antibody captured on CM5 Chip via Protein A can bind Biotinylated Cynomolgus ALPP, His Tag with an affinity constant of 82.54 nM as determined in SPR assay (Biacore T200).