

# Human Alkaline Phosphatase (Placental type) /ALPP Protein

Cat. No. APE-HM102

## Description

<b>Source</b>	Recombinant Human Alkaline Phosphatase (Placental type) /ALPP Protein is expressed from HEK293 with His tag at the C-Terminus. It contains Ile23-Asp506.
<b>Accession</b>	P05187
<b>Molecular Weight</b>	The protein has a predicted MW of 53.8 kDa. Due to glycosylation, the protein migrates to 63-68 kDa based on Tris-Bis PAGE result.
<b>Endotoxin</b>	Less than 1EU per ug by the LAL method.
<b>Purity</b>	> 95% as determined by Tris-Bis PAGE > 95% as determined by HPLC

## Formulation and Storage

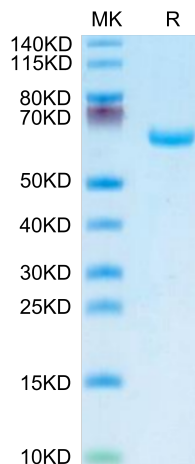
<b>Formulation</b>	Lyophilized from 0.22µm filtered solution in PBS (pH 7.4). Normally 8% trehalose is added as protectant before lyophilization.
<b>Reconstitution</b>	Centrifuge the tube before opening. Reconstituting to a concentration more than 100 µg/ml is recommended. Dissolve the lyophilized protein in distilled water.
<b>Storage</b>	-20 to -80°C for 12 months as supplied from date of receipt. -80°C for 3-6 months after reconstitution. 2-8°C for 2-7 days after reconstitution. Recommend to aliquot the protein into smaller quantities for optimal storage. Please minimize freeze-thaw cycles.

## Background

Alkaline phosphatase can be considered "our favorite enzyme" for reasons apparent to those who diagnose and treat metabolic bone diseases or who study skeletal biology. Few might know, however, that alkaline phosphatase likely represents the most frequently assayed enzyme in all of medicine. Elevated activity in the circulation is universally recognized as a marker for skeletal or hepatobiliary disease.

## Assay Data

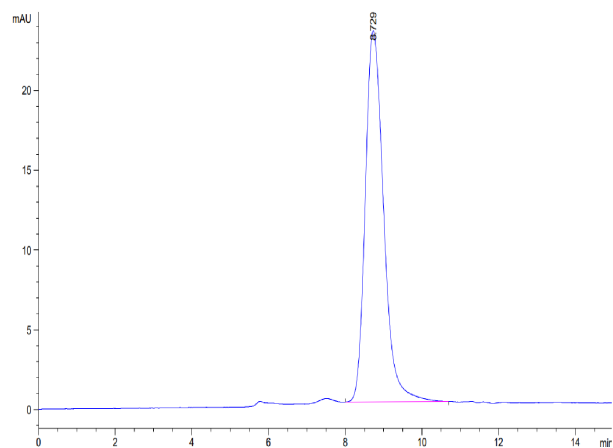
### Tris-Bis PAGE



Human Alkaline Phosphatase (Placental type) on Tris-Bis PAGE under reduced condition. The purity is greater than 95%.

### SEC-HPLC

Assay Data



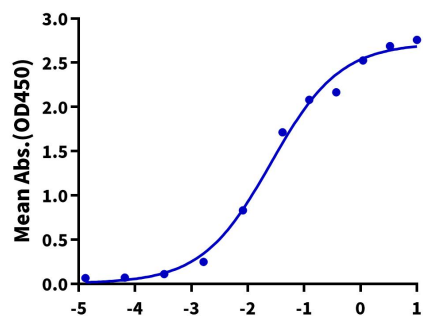
The purity of Human Alkaline Phosphatase (Placental type) is greater than 95% as determined by SEC-HPLC.

Assay Data

ELISA Data

**Human Alkaline Phosphatase, His Tag ELISA**

0.05µg Human Alkaline Phosphatase, His Tag Per Well



Immobilized Human Alkaline Phosphatase (Placental type) , His Tag at 0.5µg/ml (100µl/Well) on the plate. Dose response curve for Anti-Alkaline Phosphatase Antibody, hFc Tag with the EC50 of 25.7ng/ml determined by ELISA.

Log Anti-Alkaline Phosphatase Antibody, hFc Tag Conc.(µg/ml)