

# Biotinylated Human Alkaline Phosphatase (Placental type) /ALPP Protein (Primary Amine Labeling)



Cat. No. APE-HM102B

## Description

<b>Source</b>	Recombinant Biotinylated Human Alkaline Phosphatase (Placental type) /ALPP Protein (Primary Amine Labeling) is expressed from HEK293 with His tag at the C-terminus. It contains Ile23-Asp506.
<b>Accession</b>	P05187
<b>Molecular Weight</b>	The protein has a predicted MW of 53.8 kDa. Due to glycosylation, the protein migrates to 55-70 kDa based on Tris-Bis PAGE result.
<b>Endotoxin</b>	Less than 1EU per µg by the LAL method.
<b>Purity</b>	> 95% as determined by Tris-Bis PAGE > 95% as determined by HPLC

## Formulation and Storage

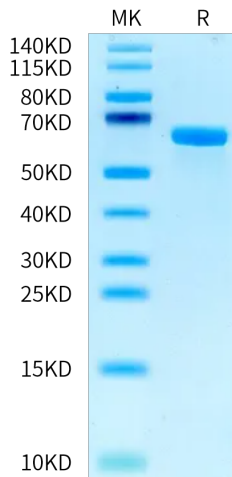
<b>Formulation</b>	Lyophilized from 0.22 µm filtered solution in PBS (pH 7.4). Normally 8% trehalose is added as protectant before lyophilization.
<b>Reconstitution</b>	Centrifuge the tube before opening. Reconstituting to a concentration more than 100 µg/ml is recommended. Dissolve the lyophilized protein in distilled water.
<b>Storage</b>	-20 to -80°C for 12 months as supplied from date of receipt. -80°C for 3-6 months after reconstitution. 2-8°C for 2-7 days after reconstitution. Recommend to aliquot the protein into smaller quantities for optimal storage. Please minimize freeze-thaw cycles.

## Background

Alkaline phosphatase can be considered "our favorite enzyme" for reasons apparent to those who diagnose and treat metabolic bone diseases or who study skeletal biology. Few might know, however, that alkaline phosphatase likely represents the most frequently assayed enzyme in all of medicine. Elevated activity in the circulation is universally recognized as a marker for skeletal or hepatobiliary disease.

## Assay Data

### Tris-Bis PAGE



Biotinylated Human Alkaline Phosphatase (Placental type) on Tris-Bis PAGE under reduced condition. The purity is greater than 95%.

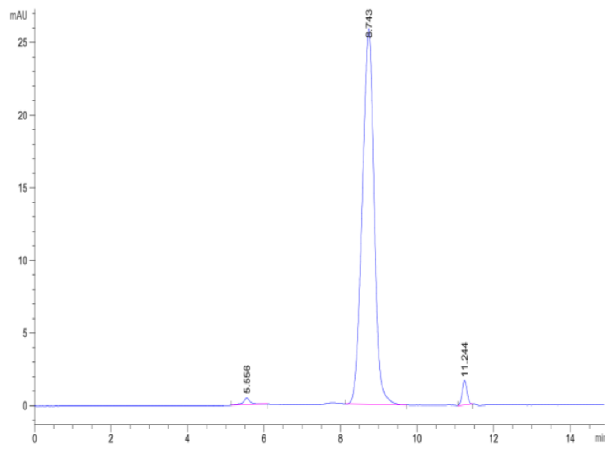
### SEC-HPLC

**Biotinylated Human Alkaline Phosphatase (Placental type) /ALPP Protein (Primary Amine Labeling)**



Cat. No. APE-HM102B

**Assay Data**



The purity of Biotinylated Human Alkaline Phosphatase (Placental type) is greater than 95% as determined by SEC-HPLC.

# Biotinylated Human Alkaline Phosphatase (Placental type) /ALPP Protein (Primary Amine Labeling)



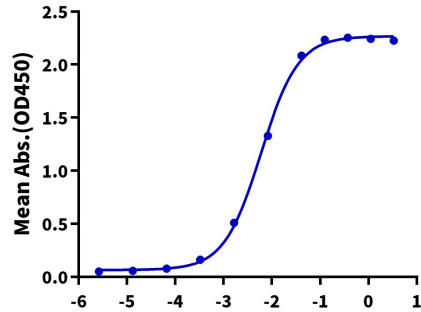
Cat. No. APE-HM102B

## Assay Data

### ELISA Data

#### Biotinylated Human Alkaline Phosphatase, His Tag ELISA

0.05µg Biotinylated Human Alkaline Phosphatase, His Tag Per Well



Immobilized Biotinylated Human Alkaline Phosphatase, His Tag at 0.5µg/ml (100µl/well) on the streptavidin precoated plate (5µg/ml). Dose response curve for Anti-Alkaline Phosphatase Antibody, hFc Tag with the EC50 of 6.0ng/ml determined by ELISA.

Log Anti-Alkaline Phosphatase Antibody, hFc Tag Conc.(µg/ml)