

Human Alkaline Phosphatase (Germ type) /ALPG Protein, Ultra Low Endotoxin



Cat. No. APE-HM303-UL

Description	
Source	Recombinant Human Alkaline Phosphatase (Germ type)/ALPG Protein is expressed from HEK293 with mFc (IgG1) tag at the C-Terminus. It contains Ile20-Asp503.
Accession	P10696
Molecular Weight	The protein has a predicted MW of 78.24 kDa. Due to glycosylation, the protein migrates to 80-100 kDa based on Bis-Tris PAGE result.
Endotoxin	Less than 0.01 EU per µg by the LAL method.
Purity	> 95% as determined by Bis-Tris PAGE > 95% as determined by HPLC

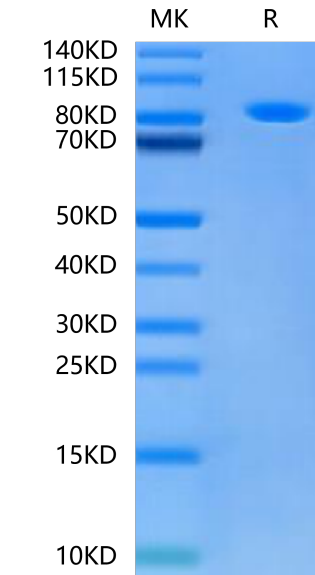
Formulation and Storage	
Formulation	Lyophilized from 0.22µm filtered solution in PBS (pH 7.4). Normally 8% trehalose is added as protectant before lyophilization.
Reconstitution	Dissolve the lyophilized protein in distilled water. Please refer to the Certificate of Analysis for detailed instructions.
Storage	-20 to -80°C for 12 months as supplied from date of receipt.-80°C for 3 months after reconstitution.Recommend to aliquot the protein into smaller quantities for optimal storage. Please minimize freeze-thaw cycles.

Background

Alkaline phosphatase can be considered "our favorite enzyme" for reasons apparent to those who diagnose and treat metabolic bone diseases or who study skeletal biology. Few might know, however, that alkaline phosphatase likely represents the most frequently assayed enzyme in all of medicine. Elevated activity in the circulation is universally recognized as a marker for skeletal or hepatobiliary disease.

Assay Data

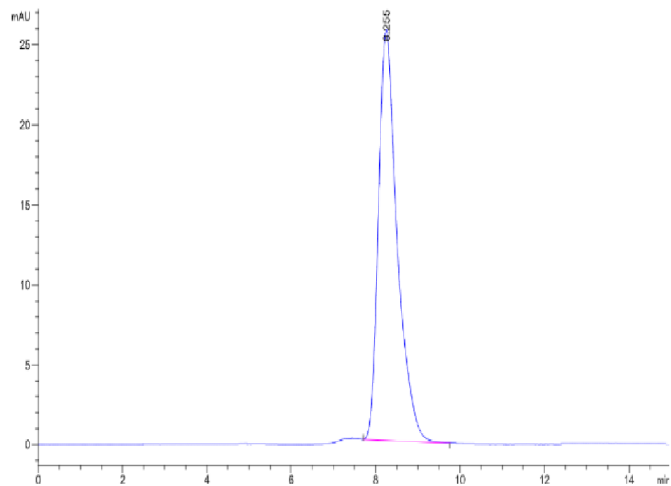
Bis-Tris PAGE



Human Alkaline Phosphatase (Germ type) on Bis-Tris PAGE under reduced condition. The purity is greater than 95%.

SEC-HPLC

Assay Data

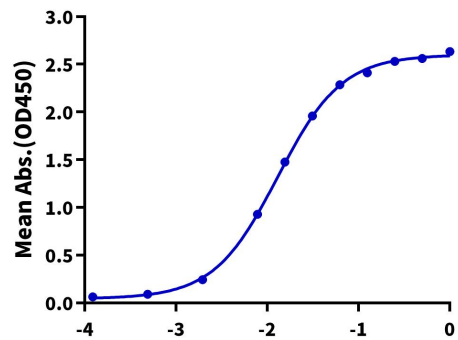


The purity of Human Alkaline Phosphatase (Germ type) is greater than 95% as determined by SEC-HPLC.

ELISA Data

Human Alkaline Phosphatase(Germ Type), mFc Tag ELISA

0.1μg Human Alkaline Phosphatase(Germ Type), mFc Tag Per Well



Immobilized Human Alkaline Phosphatase (Germ type) , mFc Tag at 1μg/ml (100μl/well) on the plate. Dose response curve for Anti-Alkaline Phosphatase Antibody, hFc Tag with the EC50 of 13.0ng/ml determined by ELISA (QC Test).