

Human Alkaline Phosphatase (Germ type) /ALPG Protein

Cat. No. APE-HM303

Description

Source	Recombinant Human Alkaline Phosphatase (Germ type)/ALPG Protein is expressed from HEK293 with mFc (IgG1) tag at the C-Terminus. It contains Ile20-Asp503.
Accession	P10696
Molecular Weight	The protein has a predicted MW of 78.24 kDa. Due to glycosylation, the protein migrates to 80-100 kDa based on Tris-Bis PAGE result.
Endotoxin	Less than 1EU per µg by the LAL method.
Purity	> 95% as determined by Tris-Bis PAGE > 95% as determined by HPLC

Formulation and Storage

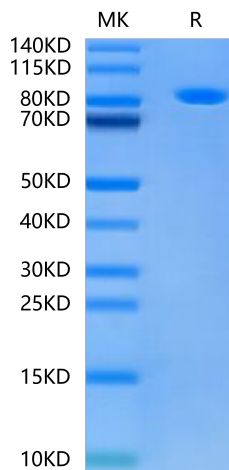
Formulation	Lyophilized from 0.22µm filtered solution in PBS (pH 7.4). Normally 8% trehalose is added as protectant before lyophilization.
Reconstitution	Centrifuge the tube before opening. Reconstituting to a concentration more than 100 µg/ml is recommended. Dissolve the lyophilized protein in distilled water.
Storage	-20 to -80°C for 12 months as supplied from date of receipt. -20 to -80°C for 3-6 months in unopened state after reconstitution. 2-8°C for 2-7 days after reconstitution. Recommend to aliquot the protein into smaller quantities for optimal storage. Please minimize freeze-thaw cycles.

Background

Alkaline phosphatase can be considered "our favorite enzyme" for reasons apparent to those who diagnose and treat metabolic bone diseases or who study skeletal biology. Few might know, however, that alkaline phosphatase likely represents the most frequently assayed enzyme in all of medicine. Elevated activity in the circulation is universally recognized as a marker for skeletal or hepatobiliary disease.

Assay Data

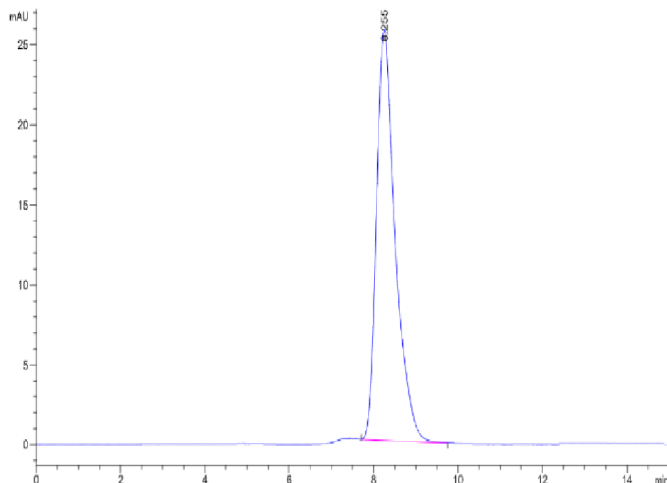
Tris-Bis PAGE



Human Alkaline Phosphatase (Germ type) on Tris-Bis PAGE under reduced condition. The purity is greater than 95%.

SEC-HPLC

Assay Data

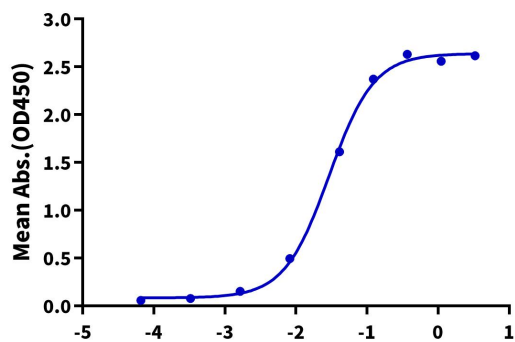


The purity of Human Alkaline Phosphatase (Germ type) is greater than 95% as determined by SEC-HPLC.

ELISA Data

Human Alkaline Phosphatase (Germ type), mFc Tag ELISA

0.05µg Human Alkaline Phosphatase (Germ type), mFc Tag Per Well



Immobilized Human Alkaline Phosphatase (Germ type) , mFc Tag at 0.5µg/ml (100µl/well) on the plate. Dose response curve for Anti-Alkaline Phosphatase Antibody, hFc Tag with the EC50 of 29.3ng/ml determined by ELISA.

Log Anti-Alkaline Phosphatase Antibody, hFc Tag Conc. (µg/ml)