

Biotinylated Human Alkaline Phosphatase (Germ type) /ALPG Protein

Cat. No. APE-HM403B

Description

Source	Recombinant Biotinylated Human Alkaline Phosphatase (Germ type) /ALPG Protein is expressed from HEK293 with His tag and Avi tag at the C-Terminus. It contains Ile20-Asp503.
Accession	P10696
Molecular Weight	The protein has a predicted MW of 55.48 kDa. Due to glycosylation, the protein migrates to 56-70 kDa based on Tris-Bis PAGE result.
Endotoxin	Less than 1EU per µg by the LAL method.
Purity	> 95% as determined by Tris-Bis PAGE > 90% as determined by HPLC

Formulation and Storage

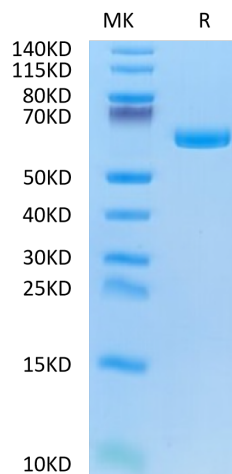
Formulation	Lyophilized from 0.22µm filtered solution in 25mM Tris, 100mM NaCl, 1mM MgCl ₂ (pH 7.5). Normally 8% trehalose is added as protectant before lyophilization.
Reconstitution	Centrifuge the tube before opening. Reconstituting to a concentration more than 100 µg/ml is recommended. Dissolve the lyophilized protein in distilled water.
Storage	-20 to -80°C for 12 months as supplied from date of receipt. -80°C for 3-6 months after reconstitution. 2-8°C for 2-7 days after reconstitution. Recommend to aliquot the protein into smaller quantities for optimal storage. Please minimize freeze-thaw cycles.

Background

Alkaline phosphatase can be considered "our favorite enzyme" for reasons apparent to those who diagnose and treat metabolic bone diseases or who study skeletal biology. Few might know, however, that alkaline phosphatase likely represents the most frequently assayed enzyme in all of medicine. Elevated activity in the circulation is universally recognized as a marker for skeletal or hepatobiliary disease.

Assay Data

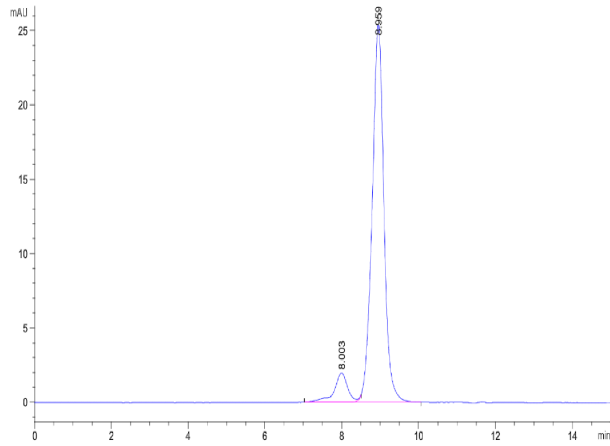
Tris-Bis PAGE



Biotinylated Human Alkaline Phosphatase (Germ type) on Tris-Bis PAGE under reduced condition. The purity is greater than 95%.

SEC-HPLC

Assay Data



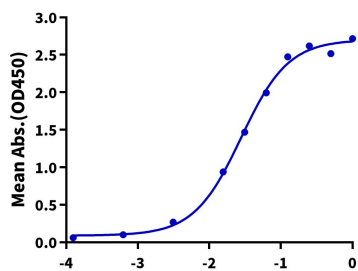
The purity of Biotinylated Human Alkaline Phosphatase (Germ type) is greater than 90% as determined by SEC-HPLC.

Assay Data

ELISA Data

Biotinylated Human Alkaline Phosphatase (Germ type), His Tag ELISA

0.1µg Anti-Alkaline Phosphatase Antibody, hFc Tag Per Well



Immobilized Anti-Alkaline Phosphatase Antibody, hFc Tag at 1µg/ml (100µl/well) on the plate. Dose response curve for Biotinylated Human Alkaline Phosphatase (Germ type) , His Tag with the EC50 of 27.8ng/ml determined by ELISA.

Log Biotinylated Human Alkaline Phosphatase (Germ type), His Tag Conc.(µg/ml)