

Mouse Alkaline phosphatase (Intestinal type) /ALPI Protein

Cat. No. APE-MM101

Description

Source	Recombinant Mouse Alkaline phosphatase (Intestinal type) /ALPI Protein is expressed from HEK293 with His tag at the C-Terminus. It contains Ile21-Gly501.
Accession	NP_001074551.1
Molecular Weight	The protein has a predicted MW of 53.10 kDa. Due to glycosylation, the protein migrates to 60-70 kDa based on Bis-Tris PAGE result.
Endotoxin	Less than 1EU per µg by the LAL method.
Purity	> 95% as determined by Bis-Tris PAGE

Formulation and Storage

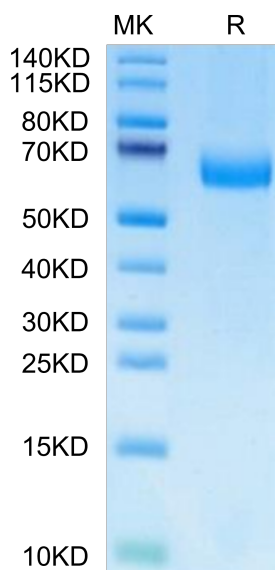
Formulation	Supplied as 0.22µm filtered solution in PBS (pH 7.4).
Storage	Valid for 12 months from date of receipt when stored at -80°C. Recommend to aliquot the protein into smaller quantities for optimal storage. Please minimize freeze-thaw cycles.

Background

Alkaline phosphatase can be considered "our favorite enzyme" for reasons apparent to those who diagnose and treat metabolic bone diseases or who study skeletal biology. Few might know, however, that alkaline phosphatase likely represents the most frequently assayed enzyme in all of medicine. Elevated activity in the circulation is universally recognized as a marker for skeletal or hepatobiliary disease.

Assay Data

Bis-Tris PAGE



Mouse Alkaline phosphatase (Intestinal type) on Bis-Tris PAGE under reduced condition. The purity is greater than 95%.