

Human/Cynomolgus Activin RIIA/ACVR2A Protein, Ultra Low Endotoxin



Cat. No. ARA-HM22A-UL

Description	
Source	Recombinant Human/Cynomolgus Activin RIIA/ACVR2A Protein is expressed from HEK293 with hFc tag at the C-terminus. It contains Ala20-Pro135.
Accession	P27037-1(Human) / G7PKJ4(Cynomolgus)
Molecular Weight	The protein has a predicted MW of W 39.35 kDa. Due to glycosylation, the protein migrates to 55-65 kDa based on Bis-Tris PAGE result.
Endotoxin	Less than 0.01 EU per µg by the LAL method.
Purity	> 95% as determined by Bis-Tris PAGE > 95% as determined by HPLC

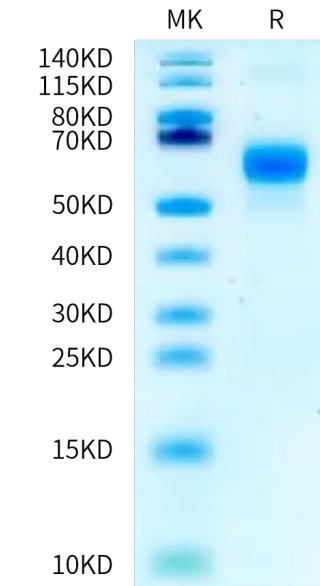
Formulation and Storage	
Formulation	Lyophilized from 0.22 µm filtered solution in PBS (pH 7.4). Normally 8% trehalose is added as protectant before lyophilization.
Reconstitution	Dissolve the lyophilized protein in distilled water. Please refer to the Certificate of Analysis for detailed instructions.
Storage	-20 to -80°C for 12 months as supplied from date of receipt.-80°C for 3 months after reconstitution.Recommend to aliquot the protein into smaller quantities for optimal storage. Please minimize freeze-thaw cycles.

Background

Activin A receptor type 2A (ACVR2A) is a membrane receptor in the transforming growth factor- beta (TGF-β signaling pathway, which is involved in the regulation of cell proliferation, migration, and apoptosis. Loss of ACVR2A has an important role in cancer progression and distant metastasis and may serve as a prognostic marker in patients with colon cancer.

Assay Data

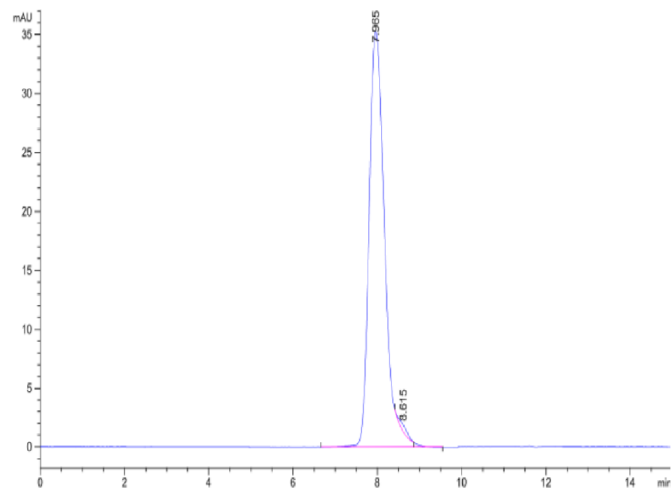
Bis-Tris PAGE



Human/Cynomolgus Activin RIIA on Bis-Tris PAGE under reduced condition. The purity is greater than 95%.

SEC-HPLC

Assay Data

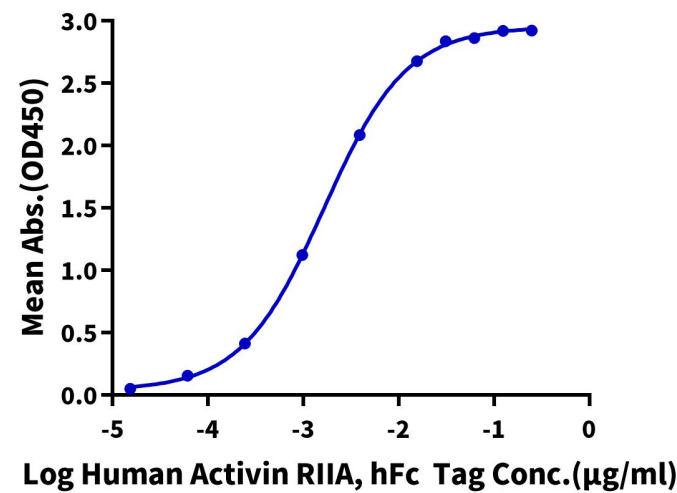


The purity of Human/Cynomolgus Activin RIIA is greater than 95% as determined by SEC-HPLC.

ELISA Data

Human Activin RIIA, hFc Tag ELISA

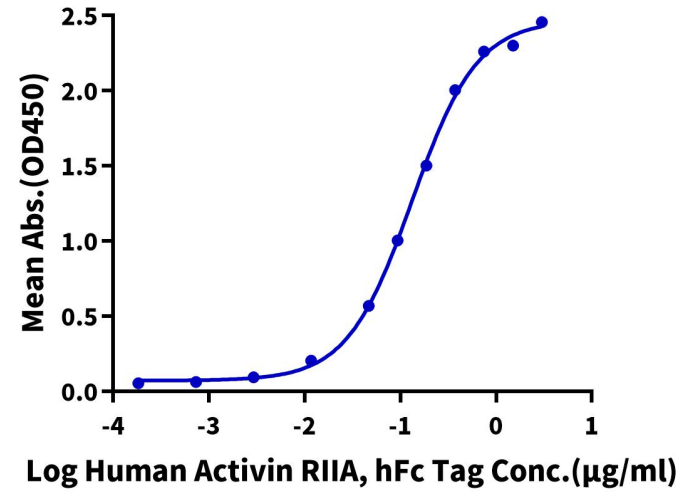
0.1 µg Human Activin A, No Tag Per Well



Immobilized Human Activin A, No Tag at 1 µg/ml (100 µl/well) on the plate. Dose response curve for Human/Cynomolgus Activin RIIA, hFc Tag with the EC50 of 1.6 ng/ml determined by ELISA (QC Test).

Human Activin RIIA, hFc Tag ELISA

0.2 µg Human/Mouse/Rat GDF-8, No Tag Per Well

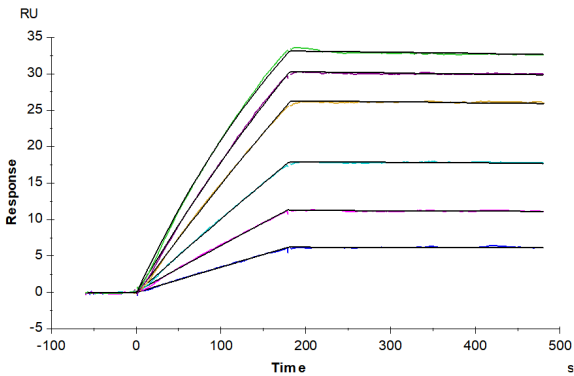


Immobilized Human/Mouse/Rat GDF-8, No Tag at 2 µg/ml (100 µl/well) on the plate. Dose response curve for Human/Cynomolgus Activin RIIA, hFc Tag with the EC50 of 0.13 µg/ml determined by ELISA.

Cat. No. ARA-HM22A-UL

Assay Data

SPR Data



Human Activin RIIA, hFc Tag captured on CM5 Chip via Protein A can bind Human/Mouse/Rat GDF-8, No Tag with an affinity constant of 0.13 nM as determined in SPR assay (Biacore T200).