

Mouse BACE-1 Protein

Cat. No. BAE-MM101

Description

Source	Recombinant Mouse BACE-1 Protein is expressed from Expi293 with His tag at the C-terminal. It contains Thr22-Thr457.
Accession	P56818
Molecular Weight	The protein has a predicted MW of 49.49 kDa. Due to glycosylation, the protein migrates to 60-70 kDa based on Tris-Bis PAGE result.
Endotoxin	Less than 1EU per μg by the LAL method.
Purity	> 95% as determined by Tris-Bis PAGE > 95% as determined by HPLC

Formulation and Storage

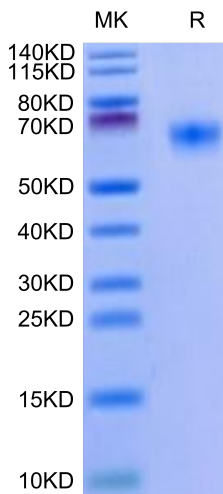
Formulation	Supplied as 0.22 μm filtered solution in PBS (pH 7.4). Please dilute to the desired concentration according to the concentration of the solution shown on the product label.
Storage	Valid for 12 months from date of receipt when stored at -80°C . Recommend to aliquot the protein into smaller quantities for optimal storage. Please do not repeated freeze-thaw cycles.

Background

The beta-site amyloid precursor protein cleaving enzyme-1 (BACE-1) initiates the generation of amyloid- β ($\text{A}\beta$), and the amyloid cascade leading to amyloid plaque deposition, neurodegeneration, and dementia in Alzheimer's disease (AD). Clinical failures of anti- $\text{A}\beta$ therapies in dementia stages suggest that treatment has to start in the early, asymptomatic disease states.

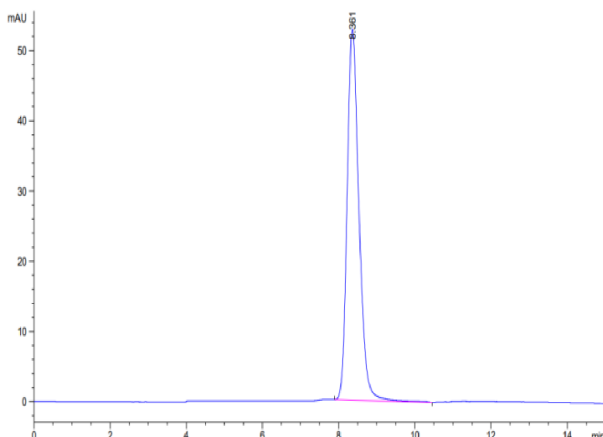
Assay Data

Tris-Bis PAGE



Mouse BACE-1 on Tris-Bis PAGE under reduced condition. The purity is greater than 95%.

SEC-HPLC



The purity of Mouse BACE-1 is greater than 95% as determined by SEC-HPLC.