

# Human BAFFR/TNFRSF13C Protein

Cat. No. BAF-HM60R

## Description

<b>Source</b>	Recombinant Human BAFFR/TNFRSF13C Protein is expressed from HEK293 with Llama IgG2b Fc tag at the C-terminus. It contains Ser7-Ala71.
<b>Accession</b>	Q96RJ3-1
<b>Molecular Weight</b>	The protein has a predicted MW of 33.85 kDa. Due to glycosylation, the protein migrates to 45-65 kDa based on Bis-Tris PAGE result.
<b>Endotoxin</b>	Less than 1 EU per $\mu\text{g}$ by the LAL method.
<b>Purity</b>	> 95% as determined by Bis-Tris PAGE > 85% as determined by HPLC

## Formulation and Storage

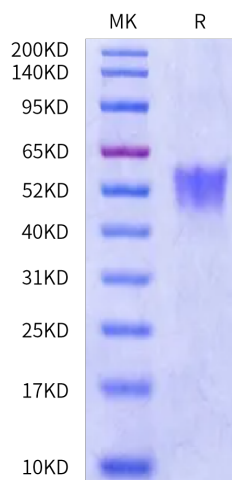
<b>Formulation</b>	Supplied as 0.22 $\mu\text{m}$ filtered solution in PBS (pH 7.4).
<b>Storage</b>	Valid for 12 months from date of receipt when stored at $-80^{\circ}\text{C}$ . Recommend to aliquot the protein into smaller quantities for optimal storage. Please minimize freeze-thaw cycles.

## Background

BAFFR is an atypical representative of the TNF-receptor super-family. BAFFR [BAFFR = B cell activating factor of the TNF-family receptor; a.k.a. BR3, Bcnd] expression starts when the immature B cells develop to transitional B cells, which then receive BAFFR-dependent pro-survival signals to rescue them from premature cell death. At protein level, the BAFFR is expressed on the surface of all human peripheral B cell subsets except for plasma cells and for centroblasts located in the dark zone of germinal centers. Its expression is upregulated after the expression of functional B cell antigen receptors (BCR) in response to tonic BCR signaling, which enhances BAFFR expression by immature and transitional B cells

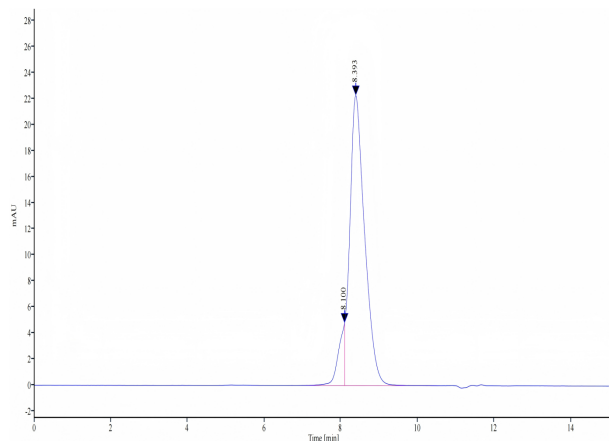
## Assay Data

### Bis-Tris PAGE



Human BAFFR on Bis-Tris PAGE under reduced condition. The purity is greater than 95%.

### SEC-HPLC



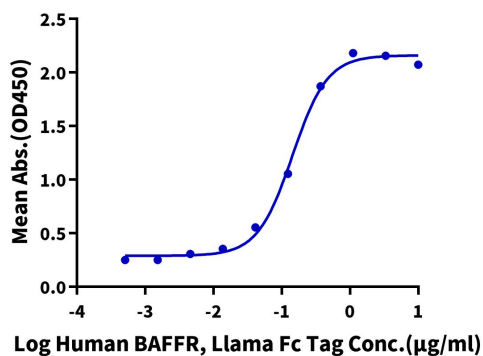
The purity of Human BAFFR is greater than 85% as determined by SEC-HPLC.

Assay Data

ELISA Data

**Human BAFFR, Llama Fc Tag ELISA**

0.5µg Human BAFF (Trimer), His Tag Per Well

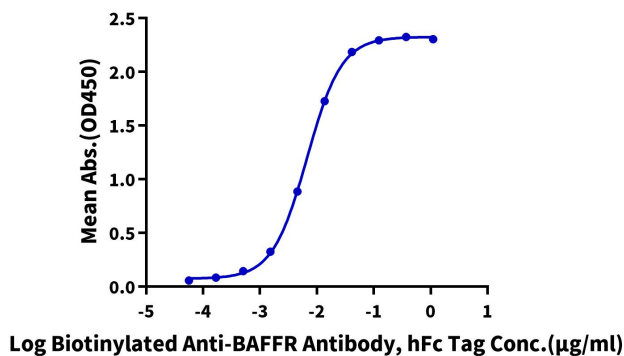


Immobilized Human BAFF (Trimer), His Tag (Cat.BAF-HM112) at 5µg/ml (100µl/well) on the plate. Dose response curve for Human BAFFR, Llama Fc Tag with the EC50 of 0.14µg/ml determined by ELISA.

ELISA Data

**Human BAFFR, Llama Fc Tag ELISA**

0.05µg Human BAFFR, Llama Fc Tag Per Well



Immobilized Human BAFFR, Llama Fc Tag at 0.5µg/ml (100µl/well) on the plate. Dose response curve for Biotinylated Anti-BAFFR Antibody, hFc Tag with the EC50 of 6.7ng/ml determined by ELISA.