

Mouse BAFF/TNFSF13B/CD257 Protein



Cat. No. BAF-MM301

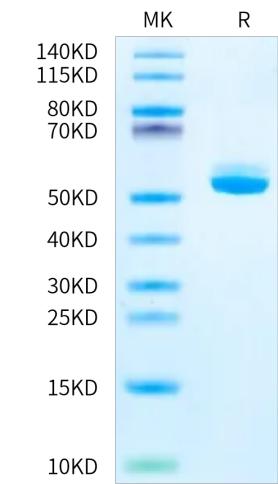
Description	
Source	Recombinant Mouse BAFF/TNFSF13B/CD257 Protein is expressed from HEK293 with mFc (IgG2a) tag at the N-terminus. It contains Ala127-Leu309.
Accession	Q9WU72-1
Molecular Weight	The protein has a predicted MW of 47.22 kDa. Due to glycosylation, the protein migrates to 50-60 kDa based on Bis-Tris PAGE result.
Endotoxin	Less than 1 EU per µg by the LAL method.
Purity	> 95% as determined by Bis-Tris PAGE > 90% as determined by HPLC

Formulation and Storage	
Formulation	Supplied as 0.22 µm filtered solution in PBS (pH 7.4).
Storage	Valid for 12 months from date of receipt when stored at -80°C. Recommend to aliquot the protein into smaller quantities for optimal storage. Please minimize freeze-thaw cycles.

Background	
B-cell activating factor (BAFF) also known as tumor necrosis factor ligand superfamily member 13B is a protein that in humans is encoded by the TNFSF13B gene.BAFF is a cytokine that belongs to the tumor necrosis factor (TNF) ligand family. This cytokine is a ligand for receptors TNFRSF13B/TACI, TNFRSF17/BCMA, and TNFRSF13C/BAFF-R.	

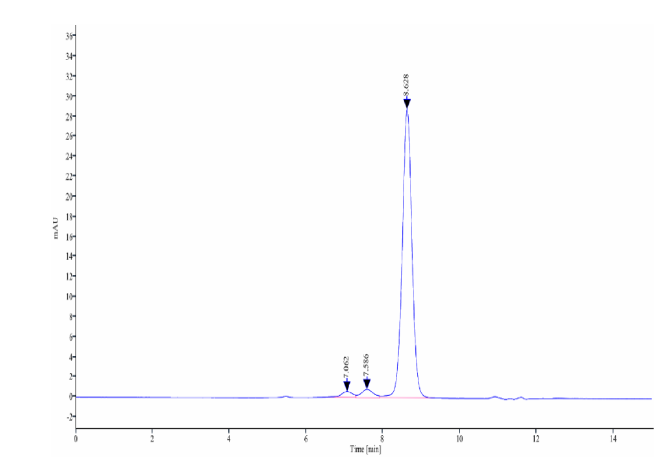
Assay Data

Bis-Tris PAGE



Mouse BAFF on Bis-Tris PAGE under reduced condition. The purity is greater than 95%.

SEC-HPLC



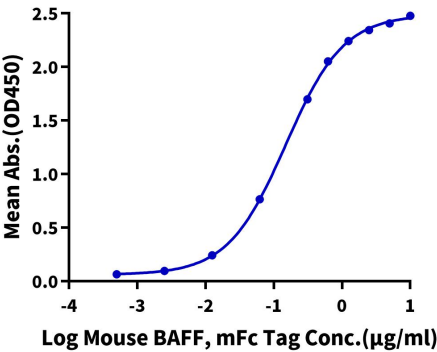
The purity of Mouse BAFF is greater than 90% as determined by SEC-HPLC.

Assay Data

ELISA Data

Mouse BAFF, mFc Tag ELISA

0.1µg Mouse BAFFR, His Tag Per Well

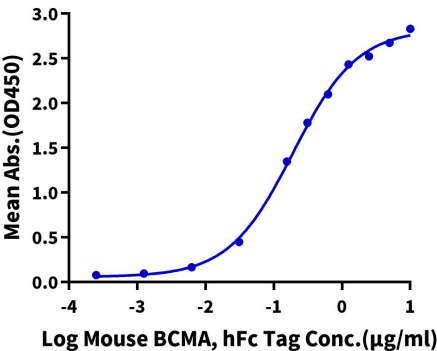


Immobilized Mouse BAFFR, His Tag at 1µg/ml (100µl/well) on the plate. Dose response curve for Mouse BAFF, mFc Tag with the EC50 of 0.15µg/ml determined by ELISA.

ELISA Data

Mouse BAFF, mFc Tag ELISA

0.2µg Mouse BAFF, mFc Tag Per Well

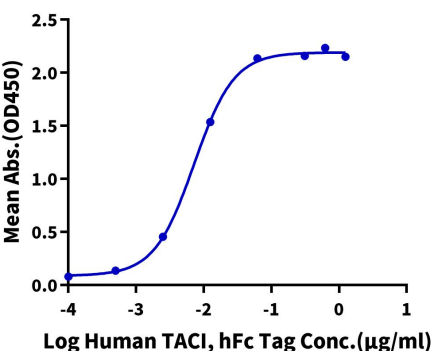


Immobilized Mouse BAFF, mFc Tag at 2µg/ml (100µl/well) on the plate. Dose response curve for Mouse BCMA, hFc Tag with the EC50 of 0.19µg/ml determined by ELISA.

ELISA Data

Mouse BAFF, mFc Tag ELISA

0.2µg Mouse BAFF, mFc Tag Per Well



Immobilized Mouse BAFF, mFc Tag at 2µg/ml(100µl/well) on the plate. Dose response curve for Human TACI, hFc Tag with the EC50 of 7.2ng/ml determined by ELISA.