

Mouse BAFF/TNFSF13B/CD257 Protein

Cat. No. BAF-MM301

Description

Source	Recombinant Mouse BAFF/TNFSF13B/CD257 Protein is expressed from HEK293 with mFc (IgG2a) tag at the N-terminus. It contains Ala127-Leu309.
Accession	Q9WU72-1
Molecular Weight	The protein has a predicted MW of 47.22 kDa. Due to glycosylation, the protein migrates to 50-60 kDa based on Bis-Tris PAGE result.
Endotoxin	Less than 1 EU per μg by the LAL method.
Purity	> 95% as determined by Bis-Tris PAGE > 85% as determined by HPLC

Formulation and Storage

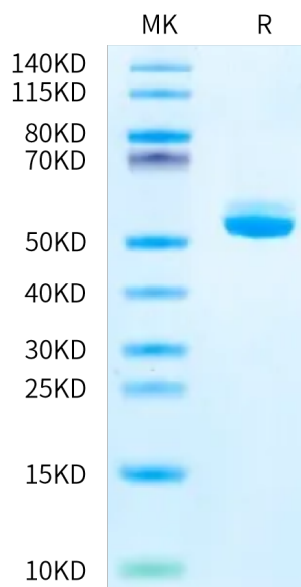
Formulation	Lyophilized from 0.22 μm filtered solution in PBS (pH 7.4). Normally 8% trehalose is added as protectant before lyophilization.
Reconstitution	Dissolve the lyophilized protein in distilled water. Please refer to the Certificate of Analysis for detailed instructions.
Storage	-20 to -80°C for 12 months as supplied from date of receipt. -80°C for 3 months after reconstitution. Recommend to aliquot the protein into smaller quantities for optimal storage. Please minimize freeze-thaw cycles.

Background

B-cell activating factor (BAFF) also known as tumor necrosis factor ligand superfamily member 13B is a protein that in humans is encoded by the TNFSF13B gene. BAFF is a cytokine that belongs to the tumor necrosis factor (TNF) ligand family. This cytokine is a ligand for receptors TNFRSF13B/TACI, TNFRSF17/BCMA, and TNFRSF13C/BAFF-R.

Assay Data

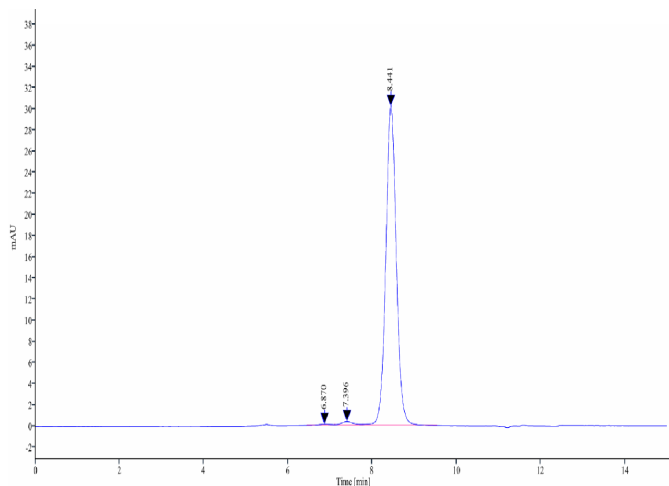
Bis-Tris PAGE



Mouse BAFF on Bis-Tris PAGE under reduced condition. The purity is greater than 95%.

SEC-HPLC

Assay Data

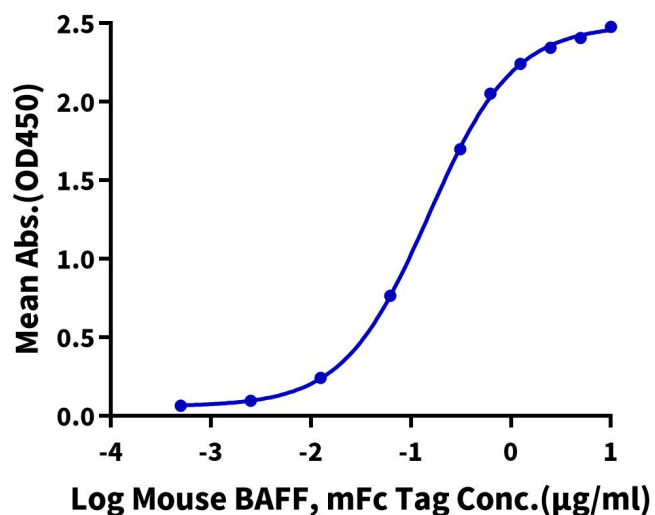


The purity of Mouse BAFF is greater than 85% as determined by SEC-HPLC.

ELISA Data

Mouse BAFF, mFc Tag ELISA

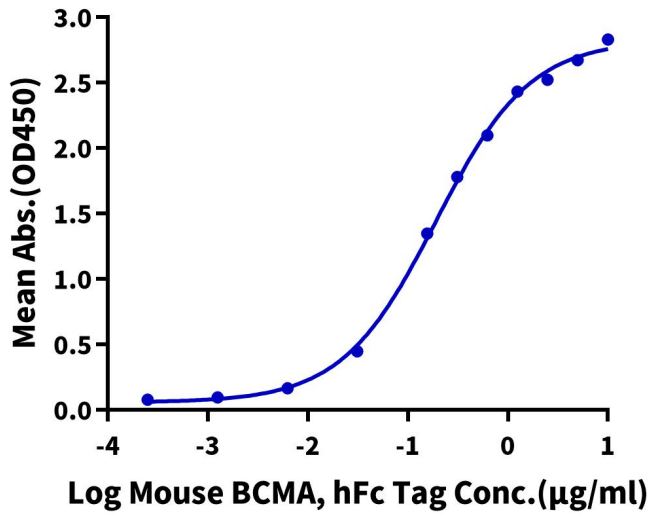
0.1µg Mouse BAFFR, His Tag Per Well



Immobilized Mouse BAFFR, His Tag at 1µg/ml (100µl/well) on the plate. Dose response curve for Mouse BAFF, mFc Tag with the EC50 of 0.15µg/ml determined by ELISA.

Mouse BAFF, mFc Tag ELISA

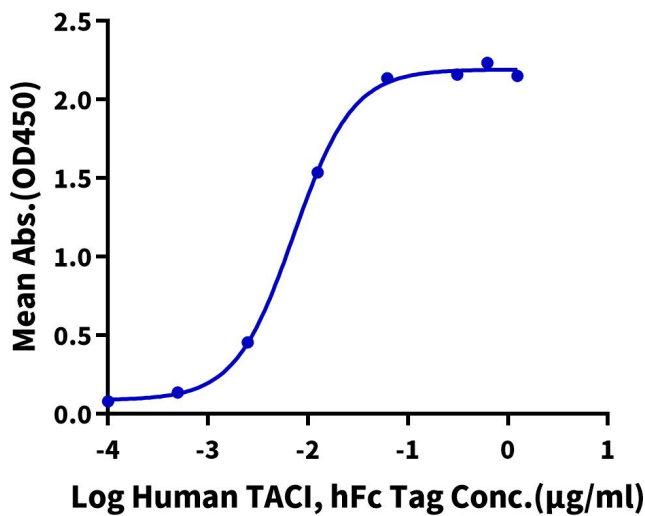
0.2µg Mouse BAFF, mFc Tag Per Well



Immobilized Mouse BAFF, mFc Tag at 2µg/ml (100µl/well) on the plate. Dose response curve for Mouse BCMA, hFc Tag with the EC50 of 0.19µg/ml determined by ELISA.

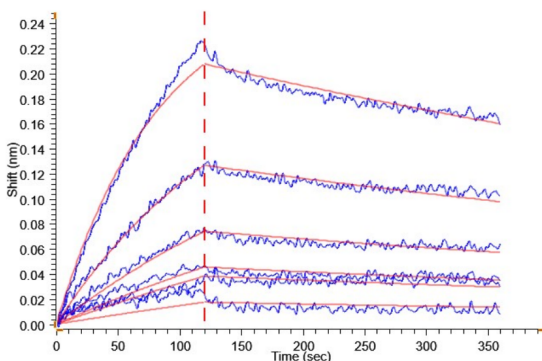
Mouse BAFF, mFc Tag ELISA

0.2µg Mouse BAFF, mFc Tag Per Well



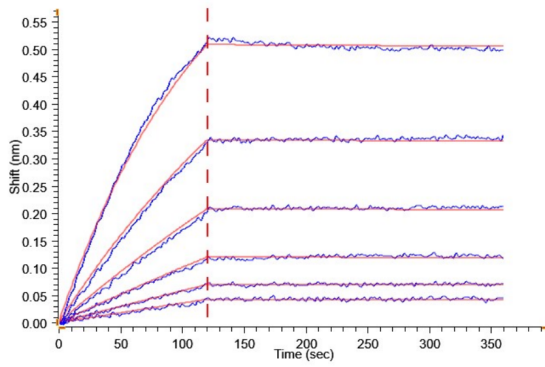
Immobilized Mouse BAFF, mFc Tag at 2µg/ml(100µl/well) on the plate. Dose response curve for Human TACI, hFc Tag with the EC50 of 7.2ng/ml determined by ELISA.

BLI Data



Loaded Mouse BCMA, His Tag on Anti-His-Biosensor can bind Mouse BAFF, mFc Tag with an affinity constant of 39.20 nM as determined in BLI assay .

Assay Data



Loaded Mouse BAFFR, His Tag on Anti-His-Biosensor can bind Mouse BAFF, mFc Tag with an affinity constant of 2.56 nM as determined in BLI assay .