

Mouse BCAM Protein

Cat. No. BCA-MM10M

Description

Source	Recombinant Mouse BCAM Protein is expressed from HEK293 with His tag at the C-Terminus. It contains Glu26-Ala541.
Accession	Q9R069
Molecular Weight	The protein has a predicted MW of 57.95 kDa. Due to glycosylation, the protein migrates to 68-75 kDa based on Bis-Tris PAGE result.
Endotoxin	Less than 1EU per μg by the LAL method.
Purity	> 95% as determined by Bis-Tris PAGE > 95% as determined by HPLC

Formulation and Storage

Formulation	Supplied as 0.22 μm filtered solution in PBS (pH 7.4).
Storage	Valid for 12 months from date of receipt when stored at -80°C. Recommend to aliquot the protein into smaller quantities for optimal storage. Please minimize freeze-thaw cycles.

Background

Lutheran/basal cell adhesion molecule (Lu/BCAM) is a transmembrane adhesion molecule expressed by erythrocytes and endothelial cells that can interact with the extracellular matrix protein laminin- $\alpha 5$. In sickle cell disease, Lu/BCAM is thought to contribute to adhesion of sickle erythrocytes to the vascular wall, especially during vaso-occlusive crises.

Assay Data

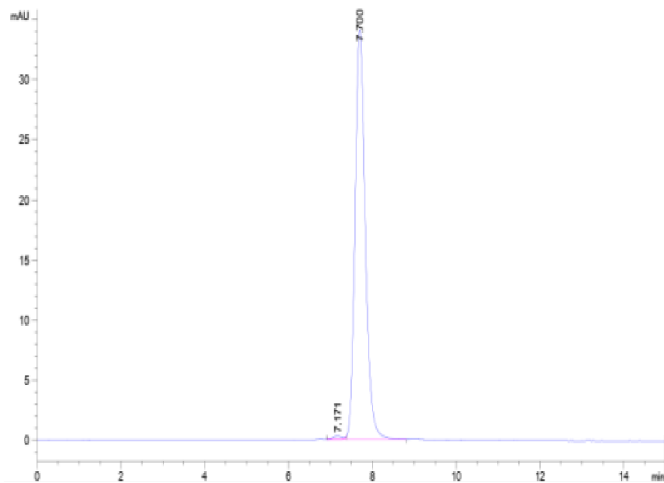
Bis-Tris PAGE



Mouse BCAM on Bis-Tris PAGE under reduced condition. The purity is greater than 95%.

SEC-HPLC

Assay Data



The purity of Mouse BCAM is greater than 95% as determined by SEC-HPLC.