

Cynomolgus/Rhesus macaque BCMA/TNFRSF17 Protein

Cat. No. BCM-CM117



Description

| | |
|-------------------------|--|
| Source | Recombinant Cynomolgus/Rhesus macaque BCMA/TNFRSF17 Protein is expressed from HEK293 with His tag at the C-terminus. |
| | It contains Met1-Ala53. |
| Accession | A0A2K5UD97(Cynomolgus) / F7FFA0(Rhesus macaque) |
| Molecular Weight | The protein has a predicted MW of 7.10 kDa. Due to glycosylation, the protein migrates to 13-23 kDa based on Bis-Tris PAGE result. |
| Endotoxin | Less than 1 EU per µg by the LAL method. |
| Purity | >95% as determined by Bis-Tris PAGE |
| | >95% as determined by HPLC |

Formulation and Storage

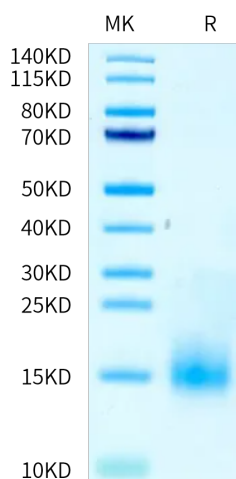
| | |
|--------------------|--|
| Formulation | Supplied as 0.22 µm filtered solution in PBS (pH 7.4). |
| Storage | Valid for 12 months from date of receipt when stored at -80°C. Recommend to aliquot the protein into smaller quantities for optimal storage. Please minimize freeze-thaw cycles. |

Background

B-cell maturation antigen (BCMA or BCM), also known as tumor necrosis factor receptor superfamily member 17 (TNFRSF17), is a protein that in humans is encoded by the TNFRSF17 gene. TNFRSF17 is a cell surface receptor of the TNF receptor superfamily which recognizes B-cell activating factor (BAFF).

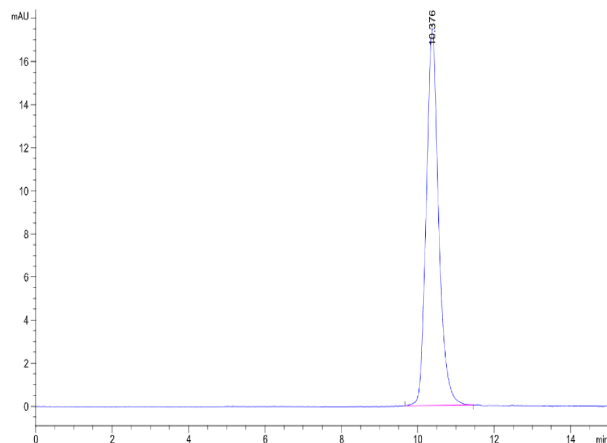
Assay Data

Bis-Tris PAGE



Cynomolgus/Rhesus macaque BCMA on Bis-Tris PAGE under reduced condition. The purity is greater than 95%.

SEC-HPLC

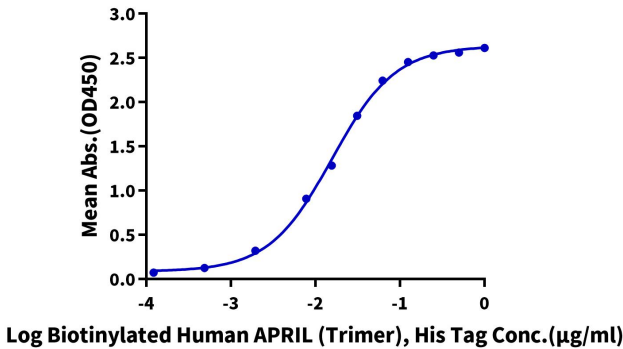


The purity of Cynomolgus/Rhesus macaque BCMA is greater than 95% as determined by SEC-HPLC.

Assay Data

ELISA Data

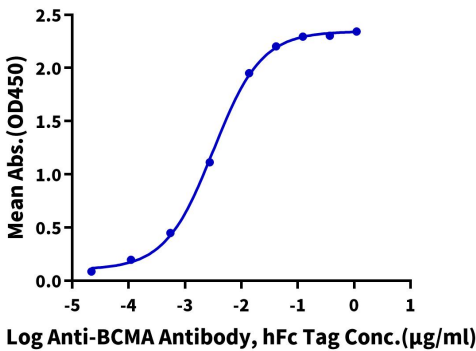
Cynomolgus BCMA, His Tag ELISA
0.1µg Cynomolgus BCMA, His Tag Per Well



Immobilized Cynomolgus BCMA, His Tag at 1 µg/ml (100 µl/well) on the plate. Dose response curve for Biotinylated Human APRIL (Trimer), His Tag with the EC50 of 15.8 ng/ml determined by ELISA (QC Test).

ELISA Data

Cynomolgus BCMA, His Tag ELISA
0.05µg Cynomolgus BCMA, His Tag Per Well



Immobilized Cynomolgus BCMA, His Tag at 0.5 µg/ml (100 µl/well) on the plate. Dose response curve for Anti-BCMA Antibody, hFc Tag with the EC50 of 3.2 ng/ml determined by ELISA.