

Cynomolgus/Rhesus macaque BCMA/TNFRSF17 Protein



Cat. No. BCM-CM117

Description	
Source	Recombinant Cynomolgus/Rhesus macaque BCMA/TNFRSF17 Protein is expressed from HEK293 with His tag at the C-terminus. It contains Met1-Ala53.
Accession	A0A2K5UD97/F7FFA0
Molecular Weight	The protein has a predicted MW of 7.10 kDa. Due to glycosylation, the protein migrates to 13-23 kDa based on Bis-Tris PAGE result.
Endotoxin	Less than 1EU per µg by the LAL method.
Purity	> 95% as determined by Bis-Tris PAGE > 95% as determined by HPLC

Formulation and Storage	
Formulation	Lyophilized from 0.22 µm filtered solution in PBS (pH 7.4). Normally 8% trehalose is added as protectant before lyophilization.
Reconstitution	Centrifuge the tube before opening. Reconstituting to a concentration more than 100 µg/ml is recommended. Dissolve the lyophilized protein in distilled water.
Storage	-20 to -80°C for 12 months as supplied from date of receipt. -80°C for 3-6 months after reconstitution. 2-8°C for 2-7 days after reconstitution. Recommend to aliquot the protein into smaller quantities for optimal storage. Please minimize freeze-thaw cycles.

Background	
B-cell maturation antigen (BCMA or BCM), also known as tumor necrosis factor receptor superfamily member 17 (TNFRSF17), is a protein that in humans is encoded by the TNFRSF17 gene. TNFRSF17 is a cell surface receptor of the TNF receptor superfamily which recognizes B-cell activating factor (BAFF).	

Assay Data

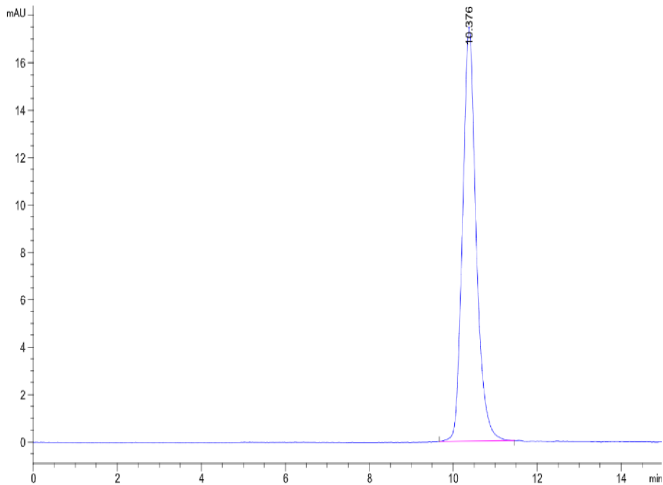
Bis-Tris PAGE



Cynomolgus/Rhesus macaque BCMA on Bis-Tris PAGE under reduced condition. The purity is greater than 95%.

SEC-HPLC

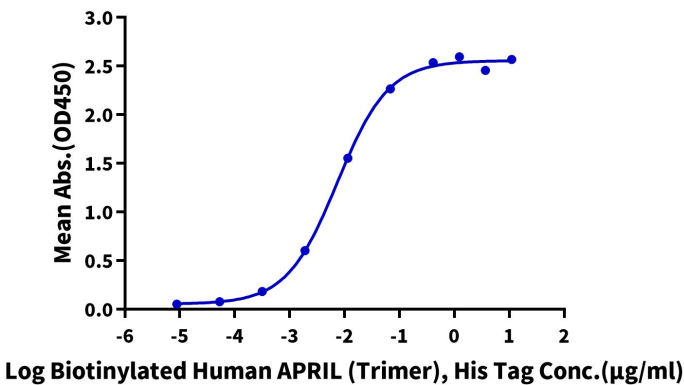
Assay Data



The purity of Cynomolgus/Rhesus macaque BCMA is greater than 95% as determined by SEC-HPLC.

ELISA Data

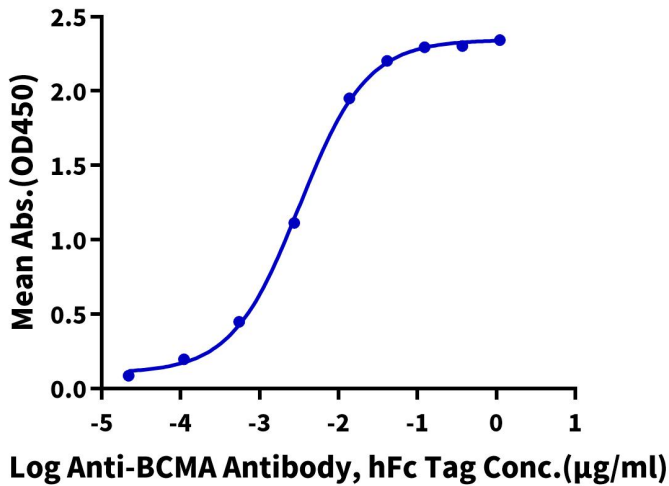
Cynomolgus BCMA, His Tag ELISA
0.1µg Cynomolgus BCMA, His Tag Per Well



Immobilized Cynomolgus BCMA, His Tag at 1µg/ml (100µl/well) on the plate. Dose response curve for Biotinylated Human APRIL (Trimer), His Tag with the EC50 of 7.4ng/ml determined by ELISA (QC Test).

ELISA Data

Cynomolgus BCMA, His Tag ELISA
0.05µg Cynomolgus BCMA, His Tag Per Well



Immobilized Cynomolgus BCMA, His Tag at 0.5µg/ml (100µl/well) on the plate. Dose response curve for Anti-BCMA Antibody, hFc Tag with the EC50 of 3.2ng/ml determined by ELISA.