

Cat. No. BCM-CM217-UL

Description

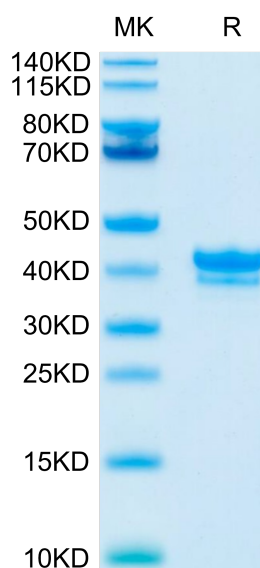
Source	Recombinant Cynomolgus/Rhesus macaque BCMA/TNFRSF17 Protein is expressed from HEK293 with hFc (IgG1) at the C-Terminus. It contains Met1-Ala53.
Accession	A0A2K5UD97(Cynomolgus) / F7FFA0(Rhesus macaque)
Molecular Weight	The protein has a predicted MW of 31.5 kDa. Due to glycosylation, the protein migrates to 35-45 kDa based on Bis-Tris PAGE result.
Endotoxin	Less than 0.01 EU per µg by the LAL method.
Purity	> 95% as determined by Bis-Tris PAGE > 95% as determined by HPLC

Formulation and Storage

Formulation	Lyophilized from 0.22µm filtered solution in PBS (pH 7.4). Normally 8% trehalose is added as protectant before lyophilization.
Reconstitution	Dissolve the lyophilized protein in distilled water. Please refer to the Certificate of Analysis for detailed instructions.
Storage	-20 to -80°C for 12 months as supplied from date of receipt. -80°C for 3 months after reconstitution. Recommend to aliquot the protein into smaller quantities for optimal storage. Please minimize freeze-thaw cycles.

Background

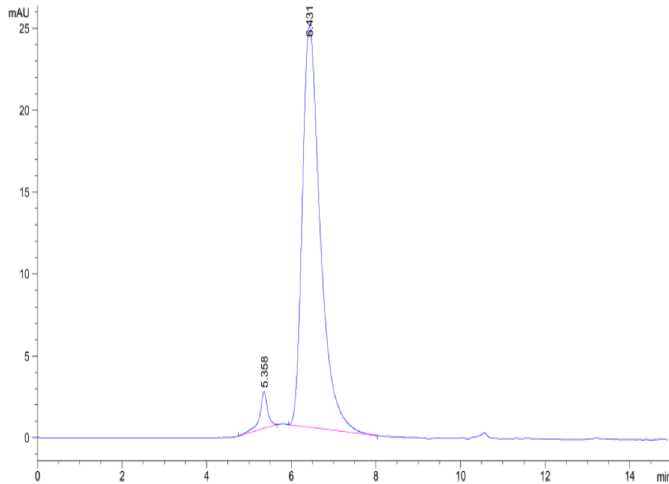
B-cell maturation antigen (BCMA or BCM), also known as tumor necrosis factor receptor superfamily member 17 (TNFRSF17), is a protein that in humans is encoded by the TNFRSF17 gene. TNFRSF17 is a cell surface receptor of the TNF receptor superfamily which recognizes B-cell activating factor (BAFF).

Assay Data**Bis-Tris PAGE**

Cynomolgus/Rhesus macaque BCMA on Bis-Tris PAGE under reduced condition. The purity is greater than 95%.

SEC-HPLC

Assay Data

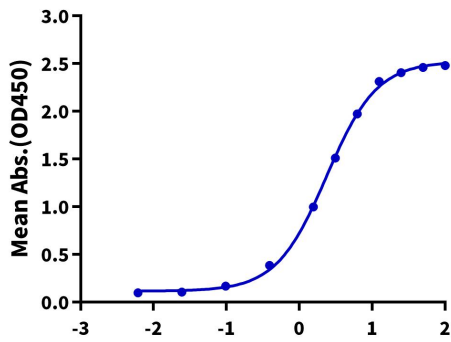


The purity of Cynomolgus/Rhesus macaque BCMA is greater than 95% as determined by SEC-HPLC.

ELISA Data

Cynomolgus/Rhesus macaque BCMA, hFc Tag ELISA

0.1µg Cynomolgus APRIL (Trimer), His Tag Per Well

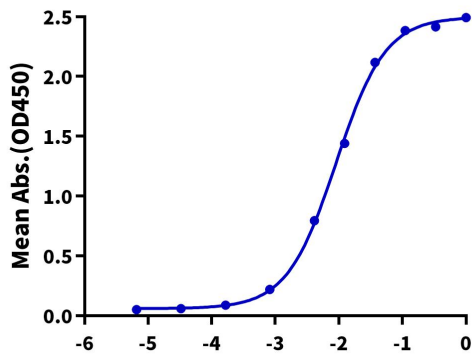


Immobilized Cynomolgus APRIL (Trimer) , His Tag at 1µg/ml (100µl/well) on the plate. Dose response curve for Cynomolgus/Rhesus macaque BCMA, hFc Tag with the EC50 of 2.4ng/ml determined by ELISA (QC Test).

Log Cynomolgus/Rhesus macaque BCMA, hFc Tag Conc.(ng/ml)

Cynomolgus/Rhesus macaque BCMA, hFc Tag ELISA

0.1µg Cynomolgus/Rhesus macaque BCMA, hFc Tag Per Well

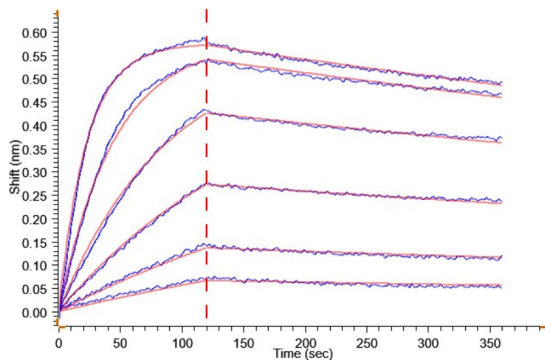


Immobilized Cynomolgus/Rhesus macaque BCMA, hFc Tag at 1µg/ml (100µl/well) on the plate. Dose response curve for Biotinylated Anti-BCMA Antibody, hFc Tag with the EC50 of 9.1ng/ml determined by ELISA.

Log Biotinylated Anti-BCMA Antibody, hFc Tag Conc.(µg/ml)

BLI Data

Assay Data



Loaded Cynomolgus APRIL (Trimer), His-Avi Tag on Anti-His-Biosensor can bind Cynomolgus BCMA, hFc Tag with an affinity constant of 1.59 nM as determined in BLI assay .