

Biotinylated Human BCMA/TNFRSF17 Protein

Cat. No. BCM-HM117B

Description	
Source	Recombinant Biotinylated Human BCMA/TNFRSF17 Protein is expressed from HEK293 with His tag and Avi tag at the C-Terminus. It contains Met1-Ala54.
Accession	Q02223-1
Molecular Weight	The protein has a predicted MW of 8.9 kDa. Due to glycosylation, the protein migrates to 12 kDa and 15-17 kDa based on Bis-Tris PAGE result.
Endotoxin	Less than 1EU per µg by the LAL method.
Purity	> 95% as determined by Bis-Tris PAGE

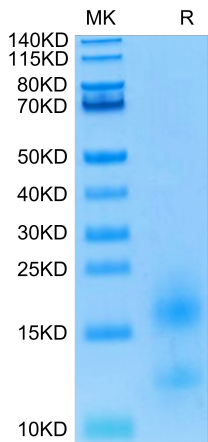
Formulation and Storage	
Formulation	Lyophilized from 0.22µm filtered solution in PBS (pH 7.4). Normally 8% trehalose is added as protectant before lyophilization.
Reconstitution	Centrifuge the tube before opening. Reconstituting to a concentration more than 100 µg/ml is recommended. Dissolve the lyophilized protein in distilled water.
Storage	-20 to -80°C for 12 months as supplied from date of receipt. -80°C for 3 months after reconstitution. Recommend to aliquot the protein into smaller quantities for optimal storage. Please minimize freeze-thaw cycles.

Background

B-cell maturation antigen (BCMA or BCM), also known as tumor necrosis factor receptor superfamily member 17 (TNFRSF17), is a protein that in humans is encoded by the TNFRSF17 gene. TNFRSF17 is a cell surface receptor of the TNF receptor superfamily which recognizes B-cell activating factor (BAFF).

Assay Data

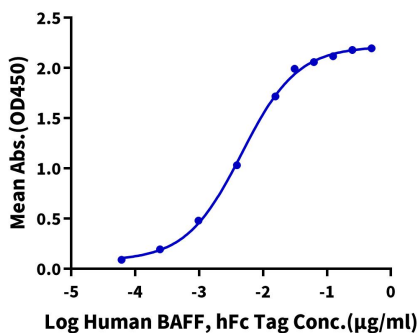
Bis-Tris PAGE



Biotinylated Human BCMA on Bis-Tris PAGE under reduced condition. The purity is greater than 95%.

ELISA Data

Biotinylated Human BCMA, His Tag ELISA
0.05µg Biotinylated Human BCMA, His Tag Per Well



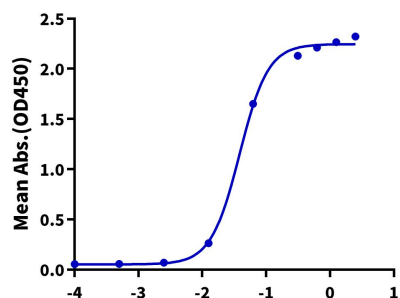
Immobilized Biotinylated Human BCMA, His Tag at 0.5µg/ml (100µl/well) on the streptavidin precoated plate (5µg/ml). Dose response curve for Human BAFF, hFc Tag with the EC50 of 4.6ng/ml determined by ELISA (QC Test).

Assay Data

ELISA Data

Biotinylated Human BCMA, His Tag ELISA

0.1µg Human APRIL (Trimer), His Tag Per Well



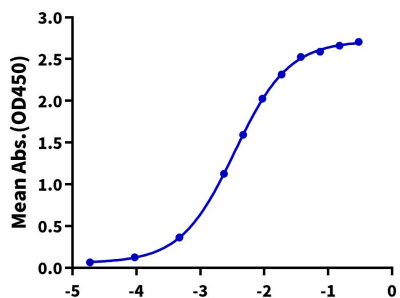
Immobilized Human APRIL (Trimer), His Tag at 1µg/ml(100µl/well) on the plate. Dose response curve for Biotinylated Human BCMA, His Tag with the EC50 of 38.2ng/ml determined by ELISA.

Log Biotinylated Human BCMA, His Tag Conc.(µg/ml)

ELISA Data

Biotinylated Human BCMA, His Tag ELISA

0.02µg Anti-BCMA Antibody, hFc Tag Per Well



Immobilized Anti-BCMA Antibody, hFc Tag at 0.2µg/ml (100µl/Well) on the plate. Dose response curve for Biotinylated Human BCMA, His Tag with the EC50 of 3.4ng/ml determined by ELISA.

Log Biotinylated Human BCMA, His Tag Conc.(µg/ml)