

# Human BCMA/TNFRSF17 (P34del) Protein

Cat. No. BCM-HM1D3

## Description

<b>Source</b>	Recombinant Human BCMA/TNFRSF17 (P34del) Protein is expressed from HEK293 with His tag at the C-terminus. It contains Met1-Ala54 (P34del).
<b>Accession</b>	Q02223-1
<b>Molecular Weight</b>	The protein has a predicted MW of 7.41 kDa. Due to glycosylation, the protein migrates to 14-20 kDa based on Bis-Tris PAGE result.
<b>Endotoxin</b>	Less than 0.1 EU per µg by the LAL method.
<b>Purity</b>	> 95% as determined by Bis-Tris PAGE > 95% as determined by HPLC

## Formulation and Storage

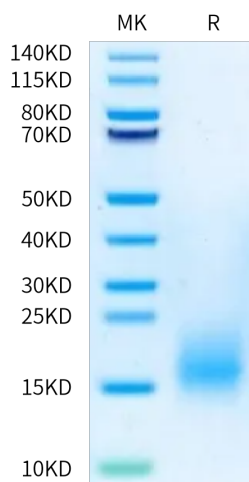
<b>Formulation</b>	Lyophilized from 0.22 µm filtered solution in PBS (pH 7.4). Normally 8% trehalose is added as protectant before lyophilization.
<b>Reconstitution</b>	Dissolve the lyophilized protein in distilled water. Please refer to the Certificate of Analysis for detailed instructions.
<b>Storage</b>	-20 to -80°C for 12 months as supplied from date of receipt. -80°C for 3 months after reconstitution. Recommend to aliquot the protein into smaller quantities for optimal storage. Please minimize freeze-thaw cycles.

## Background

B-cell maturation antigen (BCMA or BCM), also known as tumor necrosis factor receptor superfamily member 17 (TNFRSF17), is a protein that in humans is encoded by the TNFRSF17 gene. TNFRSF17 is a cell surface receptor of the TNF receptor superfamily which recognizes B-cell activating factor (BAFF).

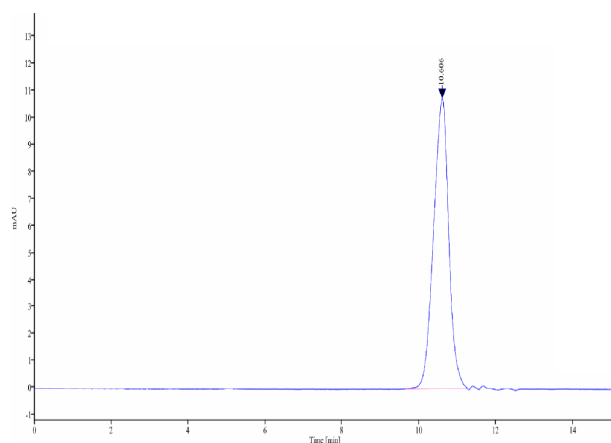
## Assay Data

### Bis-Tris PAGE



Human BCMA (P34del) on Bis-Tris PAGE under reduced condition. The purity is greater than 95%.

### SEC-HPLC



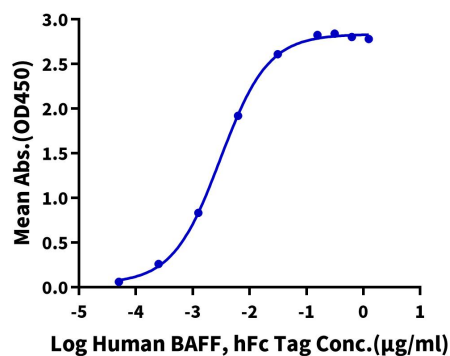
The purity of Human BCMA (P34del) is greater than 95% as determined by SEC-HPLC.

## Assay Data

## ELISA Data

**Human BCMA (P34del), His Tag ELISA**

0.1µg Human BCMA (P34del), His Tag Per Well

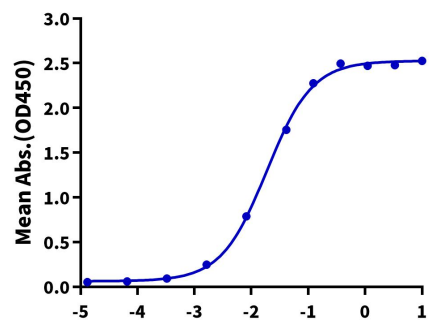


Immobilized Human BCMA (P34del), His Tag at 1µg/ml (100µl/well) on the plate. Dose response curve for Human BAFF, hFc Tag with the EC50 of 3.1ng/ml determined by ELISA.

## ELISA Data

**Human BCMA (P34del), His Tag ELISA**

0.1µg Human BCMA (P34del), His Tag Per Well

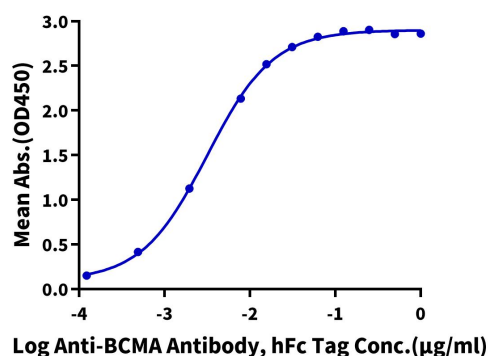


Immobilized Human BCMA (P34del), His Tag at 1µg/ml (100µl/well) on the plate. Dose response curve for Biotinylated Human APRIL (Trimer), His Avi Tag with the EC50 of 18.7ng/ml determined by ELISA.

## ELISA Data

**Human BCMA (P34del), His Tag ELISA**

0.05µg Human BCMA (P34del), His Tag Per Well



Immobilized Human BCMA (P34del), His Tag at 0.5µg/ml (100µl/well) on the plate. Dose response curve for Anti-BCMA Antibody, hFc Tag with the EC50 of 3.2ng/ml determined by ELISA.