

# Human BCMA/TNFRSF17 (R27P) Protein

Cat. No. BCM-HM1D4

## Description

|                         |   |
|-------------------------|---|
| <b>Source</b>           | Recombinant Human BCMA/TNFRSF17 (R27P) Protein is expressed from HEK293 with His tag at the C-terminus.<br>It contains Met1-Ala54 (R27P). |
| <b>Accession</b>        | Q02223-1  |
| <b>Molecular Weight</b> | The protein has a predicted MW of 7.45 kDa. Due to glycosylation, the protein migrates to 15-20 kDa based on Bis-Tris PAGE result.        |
| <b>Endotoxin</b>        | Less than 0.1 EU per $\mu\text{g}$ by the LAL method.   |
| <b>Purity</b>           | > 95% as determined by Bis-Tris PAGE<br>> 95% as determined by HPLC   |

## Formulation and Storage

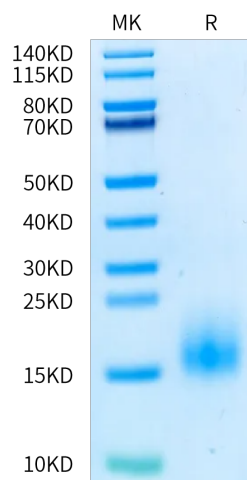
|                       |   |
|-----------------------|---|
| <b>Formulation</b>    | Lyophilized from 0.22 $\mu\text{m}$ filtered solution in PBS (pH 7.4). Normally 8% trehalose is added as protectant before lyophilization.  |
| <b>Reconstitution</b> | Dissolve the lyophilized protein in distilled water. Please refer to the Certificate of Analysis for detailed instructions.   |
| <b>Storage</b>        | -20 to -80°C for 12 months as supplied from date of receipt. -80°C for 3 months after reconstitution. Recommend to aliquot the protein into smaller quantities for optimal storage. Please minimize freeze-thaw cycles. |

## Background

B-cell maturation antigen (BCMA or BCM), also known as tumor necrosis factor receptor superfamily member 17 (TNFRSF17), is a protein that in humans is encoded by the TNFRSF17 gene. TNFRSF17 is a cell surface receptor of the TNF receptor superfamily which recognizes B-cell activating factor (BAFF).

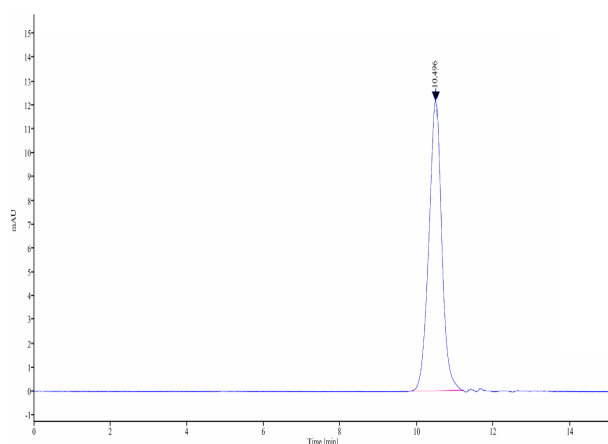
## Assay Data

### Bis-Tris PAGE



Human BCMA (R27P) on Bis-Tris PAGE under reduced condition. The purity is greater than 95%.

### SEC-HPLC



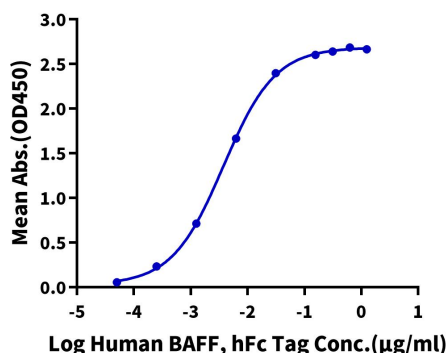
The purity of Human BCMA (R27P) is greater than 95% as determined by SEC-HPLC.

Assay Data

ELISA Data

**Human BCMA (R27P), His Tag ELISA**

0.1µg Human BCMA (R27P), His Tag Per Well

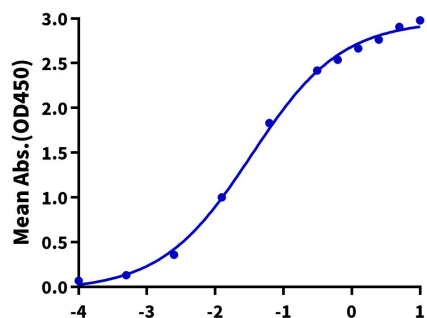


Immobilized Human BCMA (R27P), His Tag at 1µg/ml (100µl/well) on the plate. Dose response curve for Human BAFF, hFc Tag with the EC50 of 3.8ng/ml determined by ELISA.

ELISA Data

**Human BCMA (R27P), His Tag ELISA**

0.5µg Human BCMA (R27P), His Tag Per Well

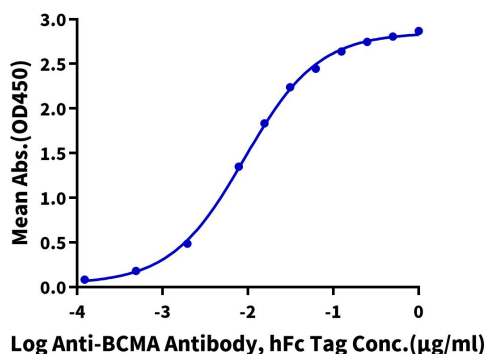


Immobilized Human BCMA (R27P), His Tag at 5µg/ml (100µl/well) on the plate. Dose response curve for Biotinylated Human APRIL (Trimer), His Avi Tag with the EC50 of 33.8ng/ml determined by ELISA.

ELISA Data

**Human BCMA (R27P), His Tag ELISA**

0.05µg Human BCMA (R27P), His Tag Per Well



Immobilized Human BCMA (R27P), His Tag at 0.5µg/ml (100µl/well) on the plate. Dose response curve for Anti-BCMA Antibody, hFc Tag with the EC50 of 9.1ng/ml determined by ELISA.