

# Mouse BCMA/TNFRSF17 Protein

Cat. No. BCM-MM417

## Description

<b>Source</b>	Recombinant Mouse BCMA/TNFRSF17 Protein is expressed from HEK293 with His tag and Avi tag at the C-Terminus. It contains Met1-Thr49.
<b>Accession</b>	O88472-1
<b>Molecular Weight</b>	The protein has a predicted MW of 8.5 kDa. Due to glycosylation, the protein migrates to 12-16 kDa based on Bis-Tris PAGE result.
<b>Endotoxin</b>	Less than 1EU per $\mu\text{g}$ by the LAL method.
<b>Purity</b>	> 95% as determined by Bis-Tris PAGE

## Formulation and Storage

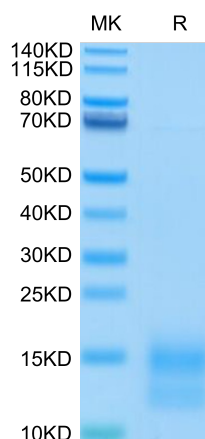
<b>Formulation</b>	Lyophilized from 0.22 $\mu\text{m}$ filtered solution in PBS (pH 7.4). Normally 8% trehalose is added as protectant before lyophilization.
<b>Reconstitution</b>	Centrifuge the tube before opening. Reconstituting to a concentration more than 100 $\mu\text{g}/\text{ml}$ is recommended. Dissolve the lyophilized protein in distilled water.
<b>Storage</b>	-20 to -80°C for 12 months as supplied from date of receipt. -80°C for 3 months after reconstitution. Recommend to aliquot the protein into smaller quantities for optimal storage. Please minimize freeze-thaw cycles.

## Background

B-cell maturation antigen (BCMA or BCM), also known as tumor necrosis factor receptor superfamily member 17 (TNFRSF17), is a protein that in humans is encoded by the TNFRSF17 gene. TNFRSF17 is a cell surface receptor of the TNF receptor superfamily which recognizes B-cell activating factor (BAFF).

## Assay Data

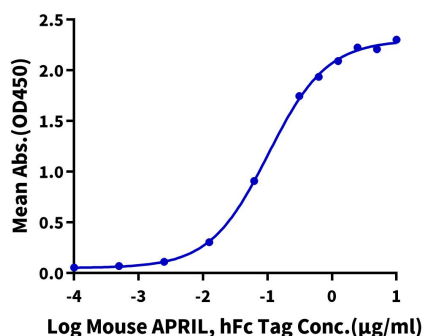
### Bis-Tris PAGE



Mouse BCMA on Bis-Tris PAGE under reduced condition. The purity is greater than 95%.

### ELISA Data

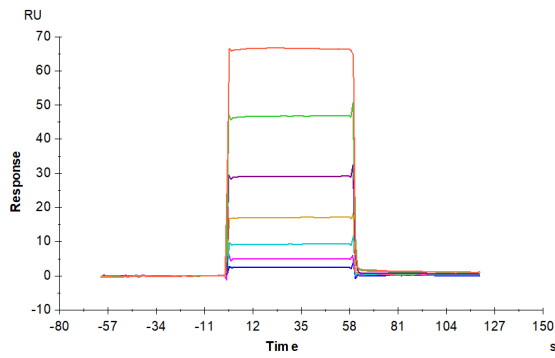
**Mouse BCMA, His Tag ELISA**  
0.5 $\mu\text{g}$  Mouse BCMA, His Tag Per Well



Immobilized Mouse BCMA, His Tag at 5 $\mu\text{g}/\text{ml}$  (100 $\mu\text{l}/\text{well}$ ) on the plate. Dose response curve for Mouse APRIL, hFc Tag with the EC50 of 0.10 $\mu\text{g}/\text{ml}$  determined by ELISA (QC Test).

Assay Data

SPR Data



Human BAFF, hFc Tag captured on CM5 Chip via Protein A can bind Mouse BCMA, His-Avi Tag with an affinity constant of 5.83  $\mu$ M as determined in SPR assay (Biacore T200).