

Human Serum Albumin Protein

Cat. No. BSA-HM501

Description

| | |
|-------------------------|--|
| Source | Recombinant Human Serum Albumin Protein is expressed from HEK293 with Llama IgG2b Fc tag at the C-terminus. It contains Asp25-Leu609. |
| Accession | P02768-1 |
| Molecular Weight | The protein has a predicted MW of 93.78 kDa. Due to glycosylation, the protein migrates to 90-110 kDa based on Bis-Tris PAGE result. |
| Endotoxin | Less than 0.1 EU per μg by the LAL method. |
| Purity | > 95% as determined by Bis-Tris PAGE > 95% as determined by HPLC |

Formulation and Storage

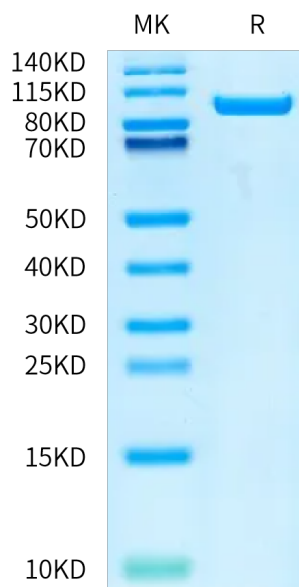
| | |
|-----------------------|---|
| Formulation | Lyophilized from 0.22 μm filtered solution in PBS (pH 7.4). Normally 8% trehalose is added as protectant before lyophilization. |
| Reconstitution | Dissolve the lyophilized protein in distilled water. Please refer to the Certificate of Analysis for detailed instructions. |
| Storage | -20 to -80°C for 12 months as supplied from date of receipt. -80°C for 3 months after reconstitution. Recommend to aliquot the protein into smaller quantities for optimal storage. Please minimize freeze-thaw cycles. |

Background

Human serum albumin (HSA), the most prominent protein in plasma, binds different classes of ligands at multiple sites. HSA provides a depot for many compounds, affects pharmacokinetics of many drugs, holds some ligands in a strained orientation providing their metabolic modification, renders potential toxins harmless transporting them to disposal sites, accounts for most of the antioxidant capacity of human serum, and acts as a NO-carrier.

Assay Data

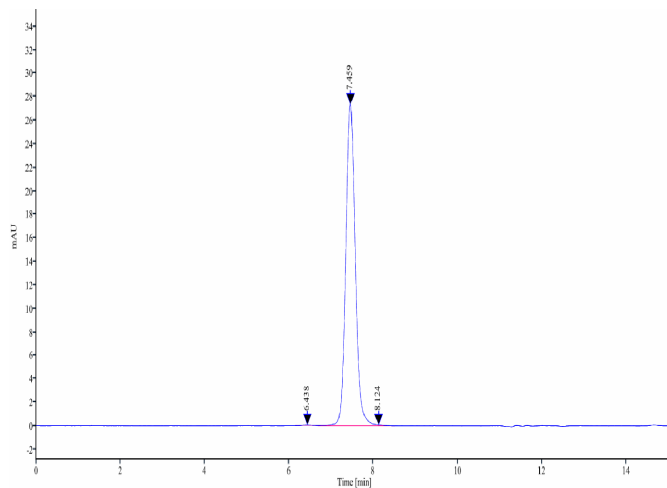
Bis-Tris PAGE



Human Serum Albumin on Bis-Tris PAGE under reduced condition. The purity is greater than 95%.

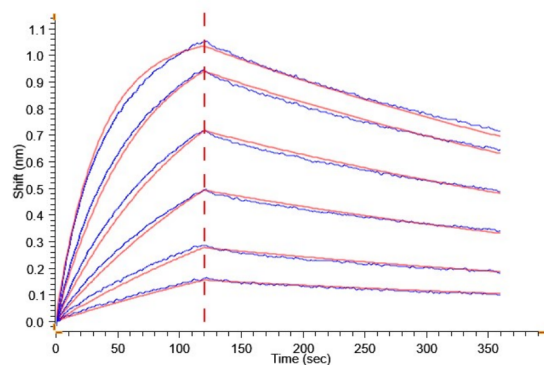
SEC-HPLC

Assay Data



The purity of Human Serum Albumin is greater than 95% as determined by SEC-HPLC.

BLI Data



Loaded Biotinylated Human FcRn, His-Avi Tag on Streptavidin-Biosensor can bind Human Serum Albumin, Llama Fc Tag with an affinity constant of 24.7 nM as determined in BLI assay .