

Human CYTL1/C17 Protein

Cat. No. C17-HM217



Description

Source	Recombinant Human CYTL1/C17 Protein is expressed from HEK293 with hFc tag at the C-Terminus. It contains Thr23-Arg136.
Accession	NP_061129.1
Molecular Weight	The protein has a predicted MW of 42.34 kDa. Due to glycosylation, the protein migrates to 50-55 kDa based on Bis-Tris PAGE result.
Endotoxin	Less than 1EU per µg by the LAL method.
Purity	> 95% as determined by Bis-Tris PAGE > 95% as determined by HPLC

Formulation and Storage

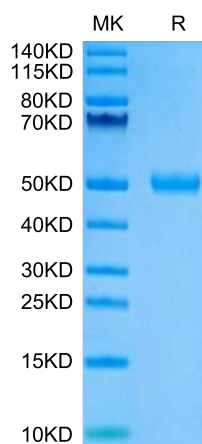
Formulation	Lyophilized from 0.22µm filtered solution in PBS (pH 7.4). Normally 8% trehalose is added as protectant before lyophilization.
Reconstitution	Centrifuge the tube before opening. Reconstituting to a concentration more than 100 µg/ml is recommended. Dissolve the lyophilized protein in distilled water.
Storage	-20 to -80°C for 12 months as supplied from date of receipt. -80°C for 3 months after reconstitution. Recommend to aliquot the protein into smaller quantities for optimal storage. Please minimize freeze-thaw cycles.

Background

Cytokine-like protein 1 (Cyt1), also named Protein C17 or C4orf4 is located on human chromosome 4p15-p16 and encodes a polypeptide of 126 amino acid residues that displays characteristics of a secretory protein. Cyt1 is expressed by a sub-population of CD34 human mononuclear cells from bone marrow and cord blood, and by chondrocytes (cartilage-forming cells).

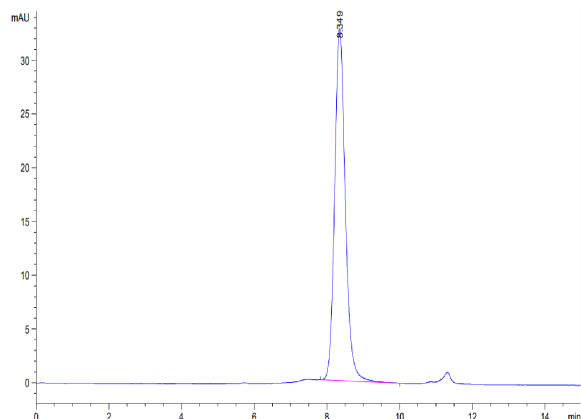
Assay Data

Bis-Tris PAGE



Human CYTL1 on Bis-Tris PAGE under reduced condition. The purity is greater than 95%.

SEC-HPLC



The purity of Human CYTL1 is greater than 95% as determined by SEC-HPLC.