

# Mouse CYTL1/C17 Protein

Cat. No. C17-MM217

## Description

<b>Source</b>	Recombinant Mouse CYTL1/C17 Protein is expressed from HEK293 with hFc tag at the C-Terminus. It contains Ala26-Ser139.
<b>Accession</b>	NP_001074575.1
<b>Molecular Weight</b>	The protein has a predicted MW of 42.62 kDa. Due to glycosylation, the protein migrates to 48-51 kDa based on Tris-Bis PAGE result.
<b>Endotoxin</b>	Less than 1EU per ug by the LAL method.
<b>Purity</b>	> 95% as determined by Tris-Bis PAGE > 95% as determined by HPLC

## Formulation and Storage

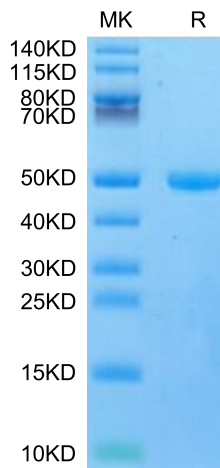
<b>Formulation</b>	Lyophilized from 0.22µm filtered solution in PBS (pH 7.4). Normally 8% trehalose is added as protectant before lyophilization.
<b>Reconstitution</b>	Centrifuge the tube before opening. Reconstituting to a concentration more than 100 µg/ml is recommended. Dissolve the lyophilized protein in distilled water.
<b>Storage</b>	-20 to -80°C for 12 months as supplied from date of receipt. -20 to -80°C for 3-6 months in unopened state after reconstitution. 2-8°C for 2-7 days after reconstitution. Recommend to aliquot the protein into smaller quantities for optimal storage. Please minimize freeze-thaw cycles.

## Background

Cytokine-like protein 1 (Cyt1), also named Protein C17 or C4orf4 is located on human chromosome 4p15-p16 and encodes a polypeptide of 126 amino acid residues that displays characteristics of a secretory protein. Cyt1 is expressed by a sub-population of CD34 human mononuclear cells from bone marrow and cord blood, and by chondrocytes (cartilage-forming cells).

## Assay Data

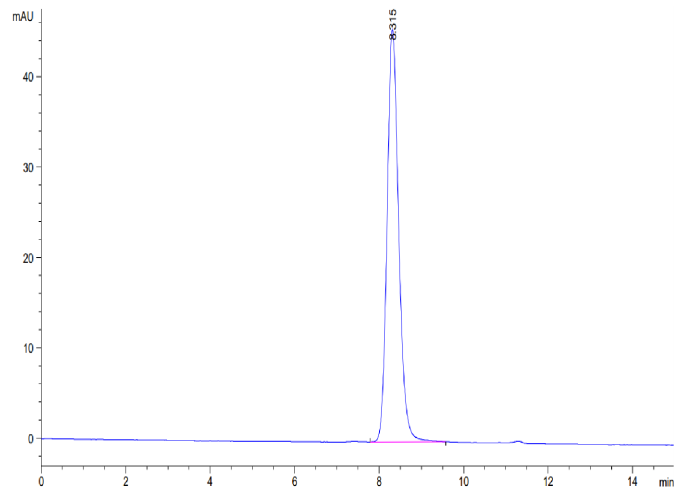
### Tris-Bis PAGE



Mouse CYTL1 on Tris-Bis PAGE under reduced condition. The purity is greater than 95%.

### SEC-HPLC

Assay Data



The purity of Mouse CYTL1 is greater than 95% as determined by SEC-HPLC.