

# Human Complement Component C1s Protein

Cat. No. C1S-HM101

## Description

<b>Source</b>	Recombinant Human Complement Component C1s Protein is expressed from HEK293 with His tag at the C-Terminus. It contains Glu16-Asp688.
<b>Accession</b>	P09871
<b>Molecular Weight</b>	The protein has a predicted MW of 75.98 kDa. Due to enzyme lysis glycosylation, the protein migrates to 55-60 kDa (light chain), 32-35 kDa (heavy chain) and 76-96 kDa based on Tris-Bis PAGE result.
<b>Endotoxin</b>	Less than 1EU per µg by the LAL method.
<b>Purity</b>	> 95% as determined by Tris-Bis PAGE

## Formulation and Storage

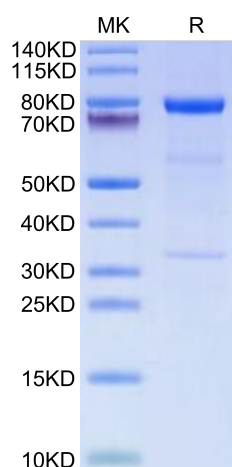
<b>Formulation</b>	Lyophilized from 0.22µm filtered solution in PBS (pH 7.4). Normally 8% trehalose is added as protectant before lyophilization.
<b>Reconstitution</b>	Centrifuge the tube before opening. Reconstituting to a concentration more than 100 µg/ml is recommended. Dissolve the lyophilized protein in distilled water.
<b>Storage</b>	-20 to -80°C for 12 months as supplied from date of receipt. -80°C for 3-6 months after reconstitution. 2-8°C for 2-7 days after reconstitution. Recommend to aliquot the protein into smaller quantities for optimal storage. Please minimize freeze-thaw cycles.

## Background

Complement C1s protease inhibitors have potential utility in the treatment of diseases associated with activation of the classical complement pathway such as humorally mediated graft rejection, ischemia-reperfusion injury (IRI), vascular leak syndrome, and acute respiratory distress syndrome (ARDS).

## Assay Data

### Tris-Bis PAGE

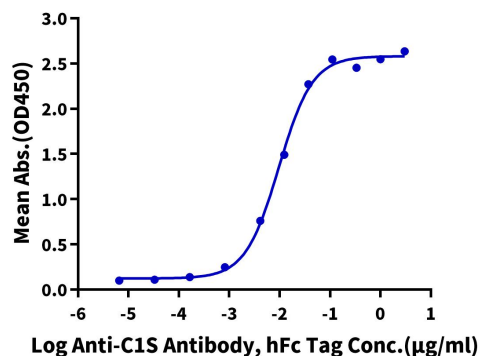


Human Complement Component C1s on Tris-Bis PAGE under reduced condition. The purity is greater than 95%.

### ELISA Data

#### Human Complement Component C1S, His Tag ELISA

0.05µg Human Complement Component C1S, His Tag Per Well



Immobilized Human Complement Component C1S, His Tag at 0.5µg/ml (100µl/well) on the plate. Dose response curve for Anti-C1S Antibody, hFc Tag with the EC50 of 9.6ng/ml determined by ELISA.