

# Human CADM1/IGSF4A Protein

Cat. No. CAD-HM101

## Description

<b>Source</b>	Recombinant Human CADM1/IGSF4A Protein is expressed from HEK293 with His tag at the C-Terminus. It contains Gln45-His374.
<b>Accession</b>	Q9BY67-1
<b>Molecular Weight</b>	The protein has a predicted MW of 38 kDa. Due to glycosylation, the protein migrates to 60-70 kDa based on Bis-Tris PAGE result.
<b>Endotoxin</b>	Less than 1EU per $\mu\text{g}$ by the LAL method.
<b>Purity</b>	> 95% as determined by Bis-Tris PAGE > 95% as determined by HPLC

## Formulation and Storage

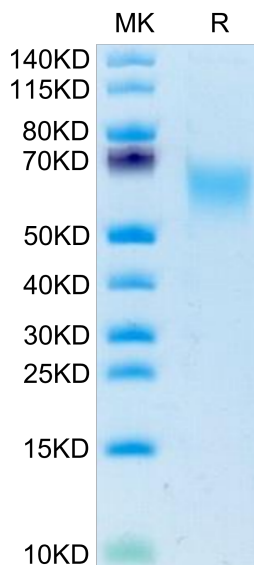
<b>Formulation</b>	Lyophilized from 0.22 $\mu\text{m}$ filtered solution in PBS (pH 7.4). Normally 8% trehalose is added as protectant before lyophilization.
<b>Reconstitution</b>	Centrifuge the tube before opening. Reconstituting to a concentration more than 100 $\mu\text{g}/\text{ml}$ is recommended. Dissolve the lyophilized protein in distilled water.
<b>Storage</b>	-20 to -80°C for 12 months as supplied from date of receipt. -80°C for 3-6 months after reconstitution. 2-8°C for 2-7 days after reconstitution. Recommend to aliquot the protein into smaller quantities for optimal storage. Please minimize freeze-thaw cycles.

## Background

The cell adhesion molecule 1 (CADM1) is a molecule of cell adhesion with multiple functions and has been identified as a tumor suppressor gene. CADM1 has multifunctions on the pathogenesis of malignancies, and other normal cells such as immune cells. On the contrary to these cutaneous solid tumors except for Merkel cell carcinoma, cutaneous lymphomas, such as adult-T cell leukemia/lymphoma, mycosis fungoides, and Sézary syndrome, increase their CADM1 expression for the development of tumor environment.

## Assay Data

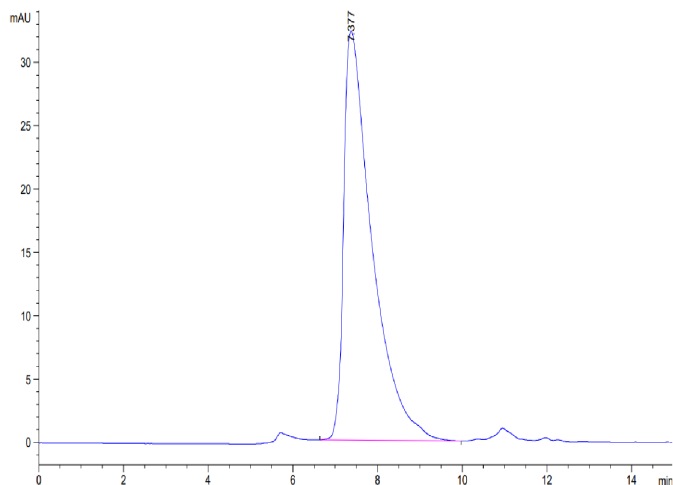
### Bis-Tris PAGE



Human CADM1 on Bis-Tris PAGE under reduced condition. The purity is greater than 95%.

### SEC-HPLC

Assay Data

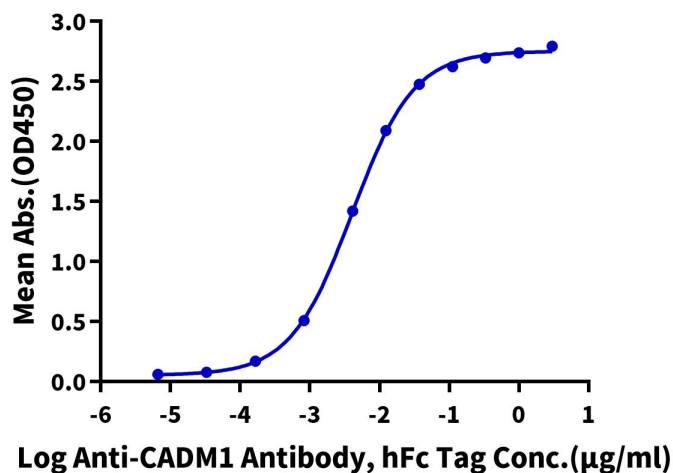


The purity of Human CADM1 is greater than 95% as determined by SEC-HPLC.

ELISA Data

**Human CADM1, His Tag ELISA**

0.05µg Human CADM1, His Tag Per Well



Immobilized Human CADM1, His Tag at 0.5µg/ml (100µl/well) on the plate. Dose response curve for Anti-CADM1 Antibody, hFc Tag with the EC50 of 4.0g/ml determined by ELISA.