

# Mouse CADM1/IGSF4A Protein

Cat. No. CAD-MM101

## Description

<b>Source</b>	Recombinant Mouse CADM1/IGSF4A Protein is expressed from Expi293 with His tag at the C-terminal. It contains Gln48-Asp388.
<b>Accession</b>	Q8R5M8-1
<b>Molecular Weight</b>	The protein has a predicted MW of 39.1 kDa. Due to glycosylation, the protein migrates to 75-80 kDa based on Tris-Bis PAGE result.
<b>Endotoxin</b>	Less than 1EU per $\mu\text{g}$ by the LAL method.
<b>Purity</b>	> 95% as determined by Tris-Bis PAGE > 95% as determined by HPLC

## Formulation and Storage

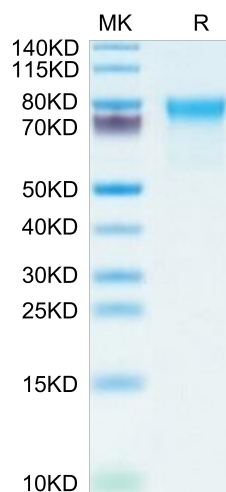
<b>Formulation</b>	Supplied as 0.22 $\mu\text{m}$ filtered solution in PBS (pH 7.4). Please dilute to the desired concentration according to the concentration of the solution shown on the product label.
<b>Storage</b>	Valid for 12 months from date of receipt when stored at -80°C. Recommend to aliquot the protein into smaller quantities for optimal storage. Please do not repeated freeze-thaw cycles.

## Background

The cell adhesion molecule 1 (CADM1) is a molecule of cell adhesion with multiple functions and has been identified as a tumor suppressor gene. CADM1 has multifunctions on the pathogenesis of malignancies, and other normal cells such as immune cells. On the contrary to these cutaneous solid tumors except for Merkel cell carcinoma, cutaneous lymphomas, such as adult-T cell leukemia/lymphoma, mycosis fungoides, and Sézary syndrome, increase their CADM1 expression for the development of tumor environment.

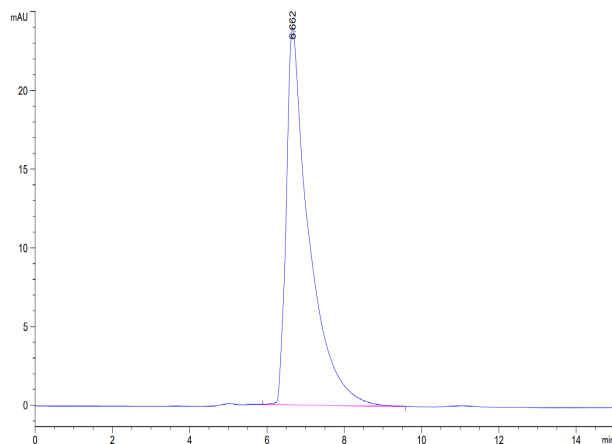
## Assay Data

### Tris-Bis PAGE



Mouse CADM1/IGSF4A on Tris-Bis PAGE under reduced condition. The purity is greater than 95%.

### SEC-HPLC



The purity of Mouse CADM1/IGSF4A is greater than 95% as determined by SEC-HPLC.