

# Human CEACAM-5/CD66e (145-500) Protein

Cat. No. CAM-HM1D5

## Description

<b>Source</b>	Recombinant Human CEACAM-5/CD66e (145-500) Protein is expressed from HEK293 with His tag at the C-terminus. It contains Pro145-Leu500.
<b>Accession</b>	P06731-1
<b>Molecular Weight</b>	The protein has a predicted MW of 40.54 kDa. Due to glycosylation, the protein migrates to 90-130 kDa based on Bis-Tris PAGE result.
<b>Endotoxin</b>	Less than 0.1 EU per µg by the LAL method.
<b>Purity</b>	> 95% as determined by Bis-Tris PAGE > 90% as determined by HPLC

## Formulation and Storage

<b>Formulation</b>	Supplied as 0.22 µm filtered solution in PBS (pH 7.4).
<b>Storage</b>	Valid for 12 months from date of receipt when stored at -80°C. Recommend to aliquot the protein into smaller quantities for optimal storage. Please minimize freeze-thaw cycles.

## Background

Carcinoembryonic antigen-related cell adhesion molecule 5 (CEACAM5) was identified as a metastatic driver. CEACAM5 overproduction enriched for an epithelial gene expression pattern and facilitated tumor outgrowth at metastatic sites. Tissues from patients with metastatic breast cancer confirmed elevated levels of CEACAM5 in lung metastases relative to breast tumors, and an inverse correlation between CEACAM5 and the mesenchymal marker vimentin was demonstrated.

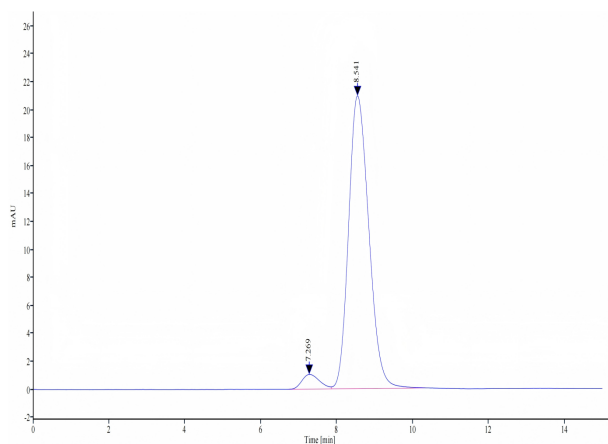
## Assay Data

### Bis-Tris PAGE



Human CEACAM-5 (145-500) on Bis-Tris PAGE under reduced condition. The purity is greater than 95%.

### SEC-HPLC



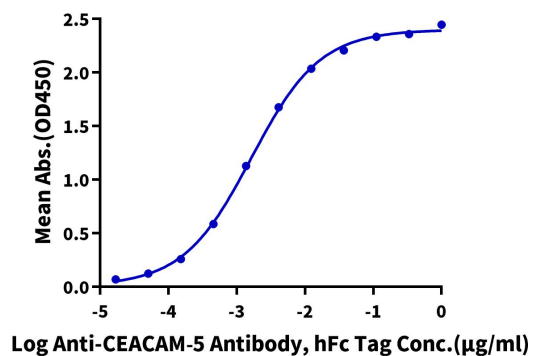
The purity of Human CEACAM-5 (145-500) is greater than 90% as determined by SEC-HPLC.

Assay Data

ELISA Data

**Human CEACAM-5 (145-500), His Tag ELISA**

0.05µg Human CEACAM-5 (145-500), His Tag Per Well



Immobilized Human CEACAM-5 (145-500), His Tag at 0.5µg/ml (100µl/well) on the plate. Dose response curve for Anti-CEACAM-5 Antibody, hFc Tag with the EC50 of 1.6ng/ml determined by ELISA.