

Human EpCAM/TROP1 Protein

Cat. No. CAM-HM1EP

Description

Source	Recombinant Human EpCAM/TROP1 Protein is expressed from HEK293 with His tag at the C-Terminus. It contains Gln24-Lys265.
Accession	P16422
Molecular Weight	The protein has a predicted MW of 28.2 kDa. Due to glycosylation, the protein migrates to 30-45 kDa based on Bis-Tris PAGE result.
Endotoxin	Less than 1EU per µg by the LAL method.
Purity	> 95% as determined by Bis-Tris PAGE > 95% as determined by HPLC

Formulation and Storage

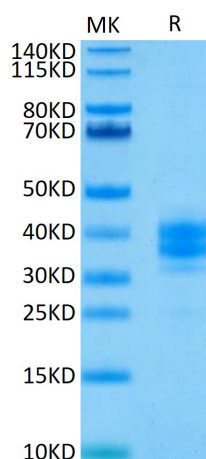
Formulation	Supplied as 0.22µm filtered solution in PBS (pH 7.4).
Storage	Valid for 12 months from date of receipt when stored at -80°C. Recommend to aliquot the protein into smaller quantities for optimal storage. Please minimize freeze-thaw cycles.

Background

Epithelial Cellular Adhesion Molecule (EpCAM), also known as KS1/4, gp40, GA733-2, 17-1A, and TROP1, is a 40 kDa transmembrane glycoprotein that consists of a 242 amino acid (aa) extracellular domain with two EGFlike repeats, a 23 aa transmembrane segment, and a 26 aa cytoplasmic domain.

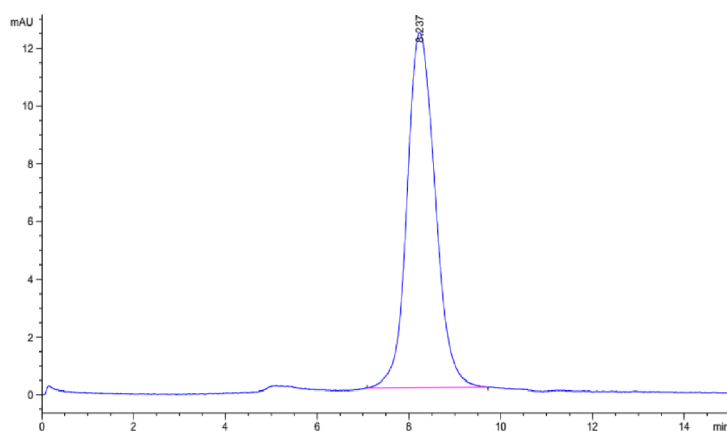
Assay Data

Bis-Tris PAGE



Human EpCAM on Bis-Tris PAGE under reduced condition. The purity is greater than 95%..

SEC-HPLC



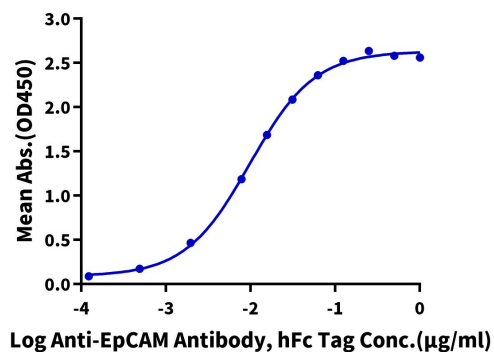
The purity of Human EpCAM is greater than 95% as determined by SEC-HPLC.

Assay Data

ELISA Data

Human EpCAM, His Tag ELISA

0.02µg Human EpCAM, His Tag Per Well



Immobilized Human EpCAM, His Tag at 0.2µg/ml (100µl/well) on the plate. Dose response curve for Anti-EpCAM Antibody, hFc Tag with the EC50 of 9.8ng/ml determined by ELISA (QC Test).