

Human EpCAM/TROP1 Protein

Cat. No. CAM-HM2EP

Description

Source	Recombinant Human EpCAM/TROP1 Protein is expressed from HEK293 with hFc tag at the C-Terminus. It contains Gln24-Lys265.
Accession	P16422
Molecular Weight	The protein has a predicted MW of 54.2 kDa. Due to glycosylation, the protein migrates to 60-70 kDa based on Bis-Tris PAGE result.
Endotoxin	Less than 1EU per µg by the LAL method.
Purity	> 95% as determined by Bis-Tris PAGE > 95% as determined by HPLC

Formulation and Storage

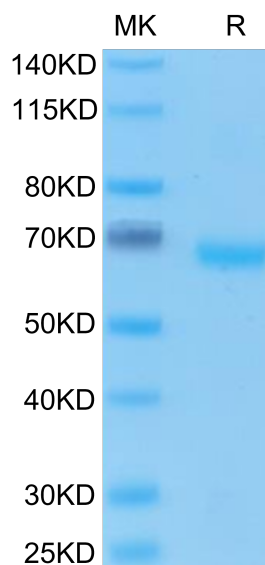
Formulation	Lyophilized from 0.22µm filtered solution in PBS (pH 7.4). Normally 8% trehalose is added as protectant before lyophilization.
Reconstitution	Centrifuge the tube before opening. Reconstituting to a concentration more than 100 µg/ml is recommended. Dissolve the lyophilized protein in distilled water.
Storage	-20 to -80°C for 12 months as supplied from date of receipt. -80°C for 3 months after reconstitution. Recommend to aliquot the protein into smaller quantities for optimal storage. Please minimize freeze-thaw cycles.

Background

Epithelial Cellular Adhesion Molecule (EpCAM), also known as KS1/4, gp40, GA733-2, 17-1A, and TROP1, is a 40 kDa transmembrane glycoprotein that consists of a 242 amino acid (aa) extracellular domain with two EGFl like repeats, a 23 aa transmembrane segment, and a 26 aa cytoplasmic domain.

Assay Data

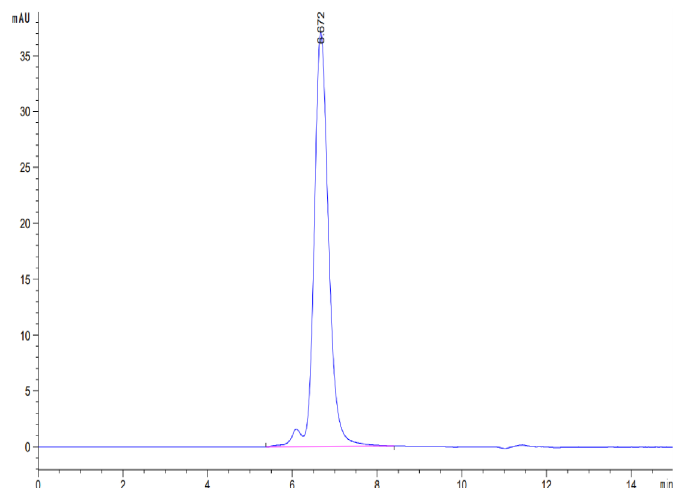
Bis-Tris PAGE



Human EpCAM on Bis-Tris PAGE under reduced condition. The purity is greater than 95%..

SEC-HPLC

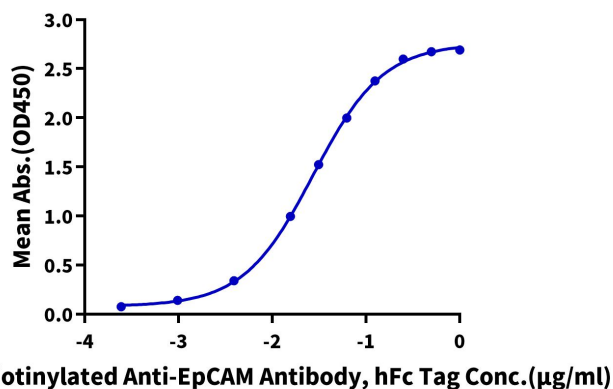
Assay Data



The purity of Human EpCAM is greater than 95% as determined by SEC-HPLC.

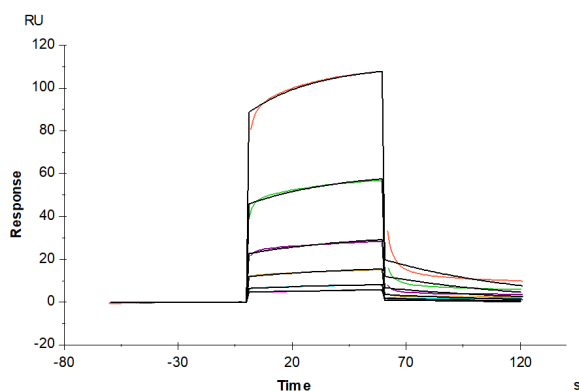
ELISA Data

Human EpCAM, hFc Tag ELISA
0.2µg Human EpCAM, hFc Tag Per Well



Immobilized Human EpCAM, hFc Tag at 2µg/ml (100µl/well) on the plate. Dose response curve for Biotinylated Anti-EpCAM Antibody, hFc Tag with the EC50 of 27.4ng/ml determined by ELISA (QC Test).

SPR Data



Human EpCAM, hFc Tag captured on CM5 Chip via Protein A can bind Human AGR-2, His Tag with an affinity constant of 6.91 µM as determined in SPR assay (Biacore T200).