

# Human Complement C5 Protein

Cat. No. CC5-HM1C5



## Description

<b>Source</b>	Recombinant Human Complement C5 Protein is expressed from HEK293 with His tag at the C-Terminus. It contains Gln19-Cys1676.
<b>Accession</b>	P01031-1
<b>Molecular Weight</b>	Human Complement C5 Protein is cleaved into $\alpha$ chain and $\beta$ chain by the enzyme lysis. Each chain has a predicted MW of 112.5 kDa ( $\alpha$ chain) and 73.29 ( $\beta$ chain). Due to glycosylation, the protein migrates to 110-114 kDa ( $\alpha$ chain) and 69-73 ( $\beta$ chain) based on Bis-Tris PAGE result.
<b>Endotoxin</b>	Less than 1EU per $\mu$ g by the LAL method.
<b>Purity</b>	> 95% as determined by Bis-Tris PAGE > 95% as determined by HPLC

## Formulation and Storage

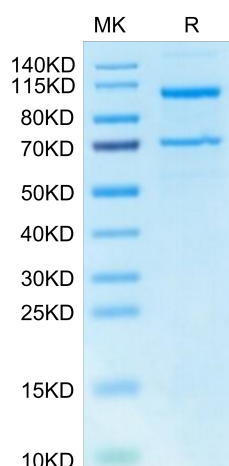
<b>Formulation</b>	Supplied as 0.22 $\mu$ m filtered solution in PBS (pH 7.4).
<b>Storage</b>	Valid for 12 months from date of receipt when stored at -80°C. Recommend to aliquot the protein into smaller quantities for optimal storage. Please minimize freeze-thaw cycles.

## Background

Complement component 5 (C5) is an essential factor of the defensive complement system in all vertebrates. C5 plays a major role in complement activation; C5 convertase cleaves C5 into the pro-inflammatory C5a, and C5b, the nidus for the formation of the lytic membrane attack complex.

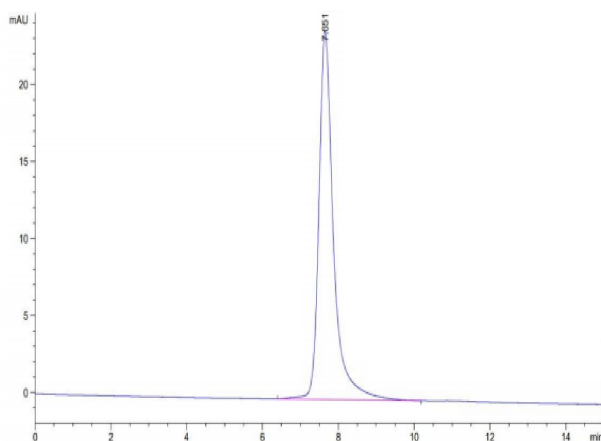
## Assay Data

### Bis-Tris PAGE



Human Complement C5 on Bis-Tris PAGE under reduced condition. The purity is greater than 95%.

### SEC-HPLC



The purity of Human Complement C5 is greater than 95% as determined by SEC-HPLC.

# Human Complement C5 Protein

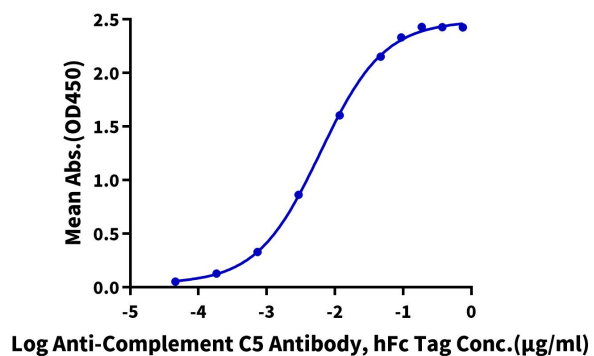
Cat. No. CC5-HM1C5

## Assay Data

### ELISA Data

#### Human Complement C5, His Tag ELISA

0.2µg Human Complement C5, His Tag Per Well



Immobilized Human Complement C5, His Tag at 2µg/ml (100µl/well) on the plate. Dose response curve for Anti-Complement C5 Antibody, hFc Tag with the EC50 of 6.1ng/ml determined by ELISA (QC Test).