

# Biotinylated Human CCL5 Protein

Cat. No. CCL-HE405B

## Description

<b>Source</b>	Recombinant Biotinylated Human CCL5 Protein is expressed from E.coli with His tag and Avi tag at the N-Terminus. It contains Ser24-Ser91.
<b>Accession</b>	P13501
<b>Molecular Weight</b>	The protein has a predicted MW of 10.89 kDa same as Bis-Tris PAGE result.
<b>Endotoxin</b>	Less than 1EU per µg by the LAL method.
<b>Purity</b>	> 95% as determined by Bis-Tris PAGE

## Formulation and Storage

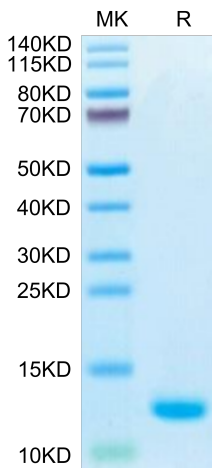
<b>Formulation</b>	Supplied as 0.22µm filtered solution in 4mM HCl.
<b>Storage</b>	Valid for 12 months from date of receipt when stored at -80°C. Recommend to aliquot the protein into smaller quantities for optimal storage. Please minimize freeze-thaw cycles.

## Background

The CCR5 and the CCL5 ligand have been detected in some hematological malignancies, lymphomas, and a great number of solid tumors, but extensive studies on the role of the CCL5/CCR axis were performed only in a limited number of cancers.

## Assay Data

### Bis-Tris PAGE

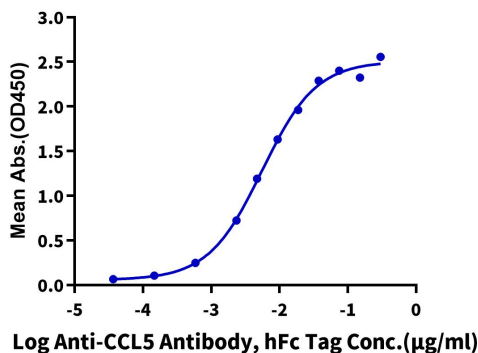


Biotinylated Human CCL5 on Bis-Tris PAGE under reduced condition. The purity is greater than 95%.

### ELISA Data

#### Biotinylated Human CCL5, His Tag ELISA

0.1µg Biotinylated Human CCL5, His Tag Per Well



Immobilized Biotinylated Human CCL5, His Tag at 1µg/ml (100µl/Well) on streptavidin (5µg/ml) precoated plate. Dose response curve for Anti-CCL5 Antibody, hFc Tag with the EC50 of 5.6ng/ml determined by ELISA (QC Test).