

Human CCL24 Protein, Ultra Low Endotoxin

Cat. No. CCL-HM124-UL

Description

Source	Recombinant Human CCL24 Protein is expressed from HEK293 with His tag at the N-Terminus. It contains Val27-Cys119.
Accession	O00175
Molecular Weight	The protein has a predicted MW of 11.9 kDa. Due to glycosylation, the protein migrates to 20-25 kDa based on Bis-Tris PAGE result.
Endotoxin	Less than 0.01 EU per µg by the LAL method.
Purity	> 95% as determined by Bis-Tris PAGE > 90% as determined by HPLC

Formulation and Storage

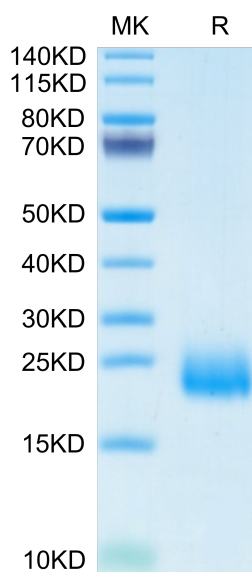
Formulation	Lyophilized from 0.22 µm filtered solution in 20mM Tris, 150mM NaCl, 100mM L-arginine (pH 7.5). Normally 8% trehalose is added as protectant before lyophilization.
Reconstitution	Dissolve the lyophilized protein in distilled water. Please refer to the Certificate of Analysis for detailed instructions.
Storage	-20 to -80°C for 12 months as supplied from date of receipt. -80°C for 3 months after reconstitution. Recommend to aliquot the protein into smaller quantities for optimal storage. Please minimize freeze-thaw cycles.

Background

C-C motif chemokine ligand 24 (CCL24) is a chemokine that regulates inflammatory and fibrotic activities through its receptor, C-C motif chemokine receptor (CCR3). CCL24 is a chemokine that regulates inflammation and fibrosis. It was found to be significantly expressed in patients with non-alcoholic steatohepatitis, in whom it regulates profibrotic processes in the liver.

Assay Data

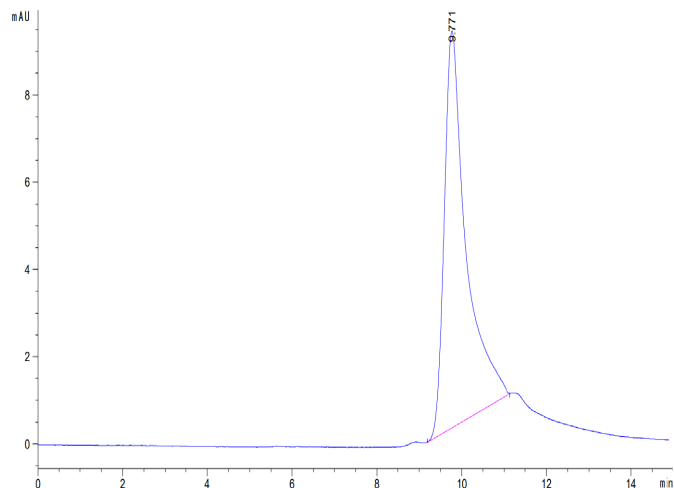
Bis-Tris PAGE



Human CCL24 on Bis-Tris PAGE under reduced condition. The purity is greater than 95%.

SEC-HPLC

Assay Data

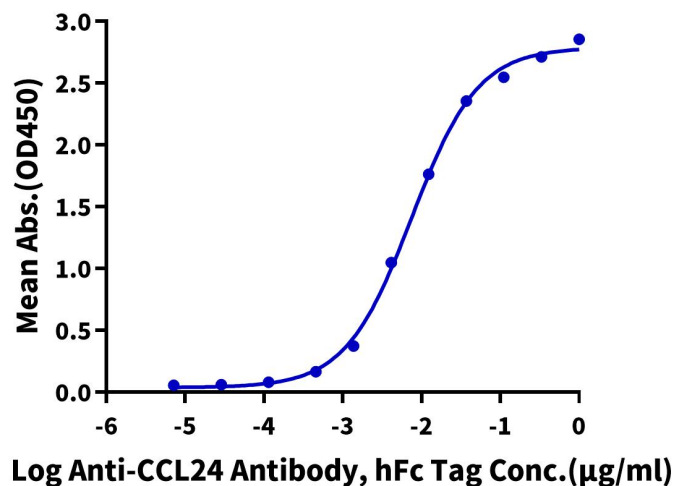


The purity of Human CCL24 is greater than 90% as determined by SEC-HPLC.

ELISA Data

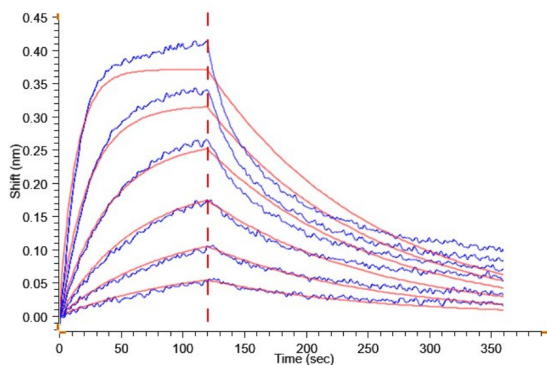
Human CCL24, His Tag ELISA

0.1µg Human CCL24, His Tag Per Well



Immobilized Human CCL24, His Tag at 1µg/ml (100µl/Well) on the plate. Dose response curve for Anti-CCL24 Antibody, hFc Tag with the EC50 of 7.5ng/ml determined by ELISA (QC Test).

BLI Data



Loaded Anti-CCL24 Antibody, hFc Tag on ProA-Biosensor can bind Human CCL24, His Tag with an affinity constant of 22.0 nM as determined in BLI assay.