

# Human CCL24 Protein

Cat. No. CCL-HM124



## Description

<b>Source</b>	Recombinant Human CCL24 Protein is expressed from HEK293 with His tag at the N-Terminus. It contains Val27-Cys119.
<b>Accession</b>	O00175
<b>Molecular Weight</b>	The protein has a predicted MW of 11.9 kDa. Due to glycosylation, the protein migrates to 20-25 kDa based on Bis-Tris PAGE result.
<b>Endotoxin</b>	Less than 1EU per µg by the LAL method.
<b>Purity</b>	> 95% as determined by Bis-Tris PAGE > 90% as determined by HPLC

## Formulation and Storage

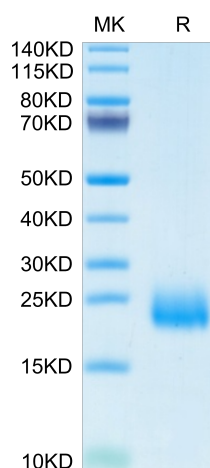
<b>Formulation</b>	Supplied as 0.22µm filtered solution in 20mM Tris, 500mM NaCl (pH 7.5).
<b>Storage</b>	Valid for 12 months from date of receipt when stored at -80°C. Recommend to aliquot the protein into smaller quantities for optimal storage. Please minimize freeze-thaw cycles.

## Background

C-C motif chemokine ligand 24 (CCL24) is a chemokine that regulates inflammatory and fibrotic activities through its receptor, C-C motif chemokine receptor (CCR3). CCL24 is a chemokine that regulates inflammation and fibrosis. It was found to be significantly expressed in patients with non-alcoholic steatohepatitis, in whom it regulates profibrotic processes in the liver.

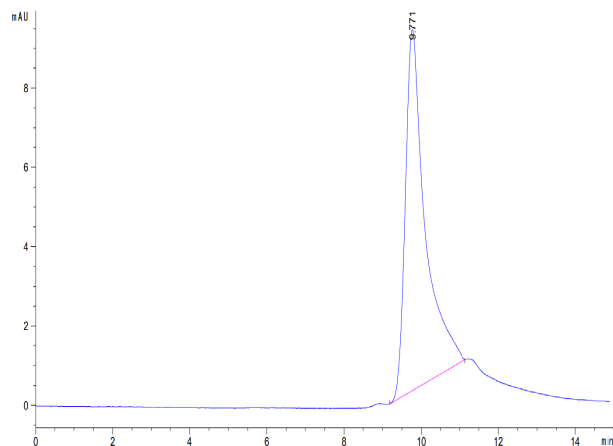
## Assay Data

### Bis-Tris PAGE



Human CCL24 on Bis-Tris PAGE under reduced condition. The purity is greater than 95%.

### SEC-HPLC



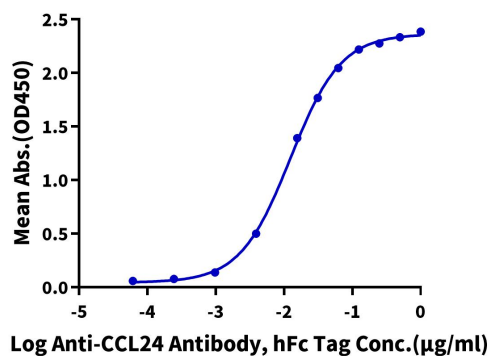
The purity of Human CCL24 is greater than 90% as determined by SEC-HPLC.

Assay Data

ELISA Data

**Human CCL24, His Tag ELISA**

0.2µg Human CCL24, His Tag Per Well



Immobilized Human CCL24, His Tag at 2µg/ml (100µl/Well) on the plate. Dose response curve for Anti-CCL24 Antibody, hFc Tag with the EC50 of 12.4ng/ml determined by ELISA (QC Test).