

Human CCL24 Protein, Ultra Low Endotoxin



Cat. No. CCL-HM224-UL

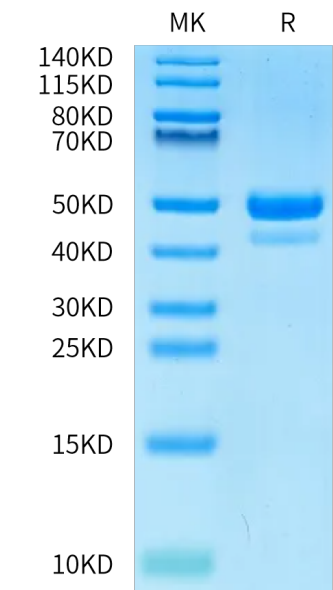
Description	
Source	Recombinant Human CCL24 Protein is expressed from HEK293 with hFc tag at the N-Terminus. It contains Val27-Cys119.
Accession	O00175
Molecular Weight	The protein has a predicted MW of 36.5 kDa. Due to glycosylation, the protein migrates to 42-52 kDa based on Bis-Tris PAGE result.
Endotoxin	Less than 0.01 EU per µg by the LAL method.
Purity	> 95% as determined by Bis-Tris PAGE > 95% as determined by HPLC

Formulation and Storage	
Formulation	Lyophilized from 0.22µm filtered solution in PBS (pH 7.4). Normally 8% trehalose is added as protectant before lyophilization.
Reconstitution	Dissolve the lyophilized protein in distilled water. Please refer to the Certificate of Analysis for detailed instructions.
Storage	-20 to -80°C for 12 months as supplied from date of receipt. -80°C for 3 months after reconstitution. Recommend to aliquot the protein into smaller quantities for optimal storage. Please minimize freeze-thaw cycles.

Background	
C-C motif chemokine ligand 24 (CCL24) is a chemokine that regulates inflammatory and fibrotic activities through its receptor, C-C motif chemokine receptor (CCR3). CCL24 is a chemokine that regulates inflammation and fibrosis. It was found to be significantly expressed in patients with non-alcoholic steatohepatitis, in whom it regulates profibrotic processes in the liver.	

Assay Data

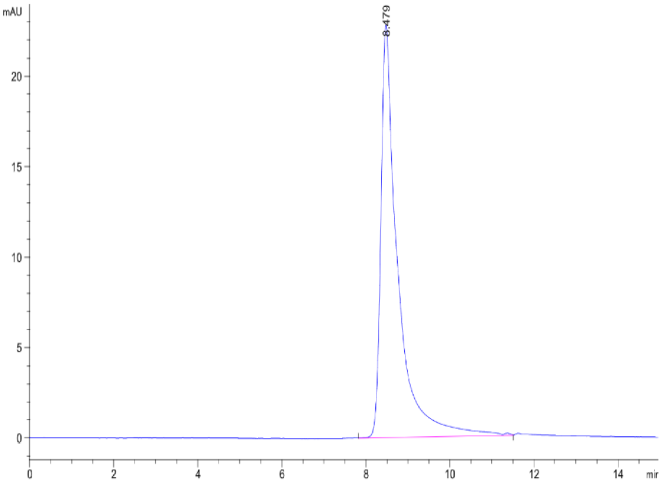
Bis-Tris PAGE



Human CCL24 on Bis-Tris PAGE under reduced condition. The purity is greater than 95%.

SEC-HPLC

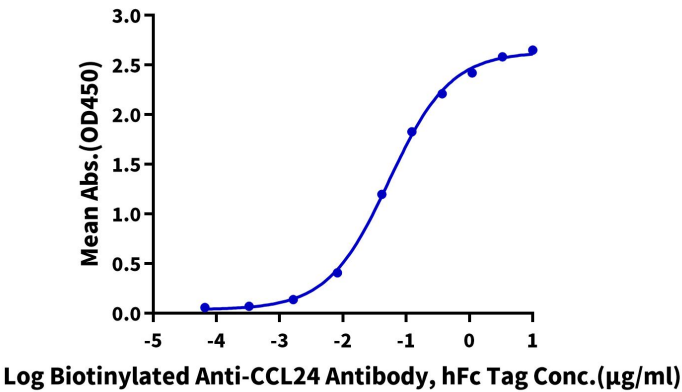
Assay Data



The purity of Human CCL24 is greater than 95% as determined by SEC-HPLC.

ELISA Data

Human CCL24, hFc Tag ELISA  
0.1µg Human CCL24, hFc Tag Per Well



Immobilized Human CCL24, hFc Tag at 1µg/ml (100µl/Well) on the plate. Dose response curve for Biotinylated Anti-CCL24 Antibody, hFc Tag with the EC50 of 53.8ng/ml determined by ELISA.