

Mouse CCL5 Protein

Cat. No. CCL-MM205

Description

Source	Recombinant Mouse CCL5 Protein is expressed from HEK293 with hFc tag at the N-Terminus It contains Ser24-Ser91.
Accession	P30882
Molecular Weight	The protein has a predicted MW of 35.2 kDa. Due to glycosylation, the protein migrates to 40-45 kDa based on Bis-Tris PAGE result.
Endotoxin	Less than 1 EU per µg by the LAL method.
Purity	> 95% as determined by Bis-Tris PAGE > 95% as determined by HPLC

Formulation and Storage

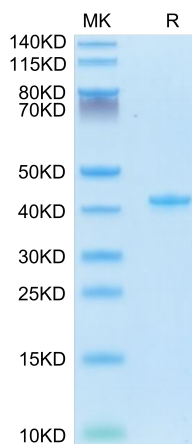
Formulation	Lyophilized from 0.22 µm filtered solution in PBS (pH 7.4). Normally 8% trehalose is added as protectant before lyophilization.
Reconstitution	Centrifuge the tube before opening. Reconstituting to a concentration more than 100 µg/ml is recommended. Dissolve the lyophilized protein in distilled water.
Storage	-20 to -80°C for 12 months as supplied from date of receipt. -80°C for 3 months after reconstitution. Recommend to aliquot the protein into smaller quantities for optimal storage. Please minimize freeze-thaw cycles.

Background

The CCR5 and the CCL5 ligand have been detected in some hematological malignancies, lymphomas, and a great number of solid tumors, but extensive studies on the role of the CCL5/CCR axis were performed only in a limited number of cancers.

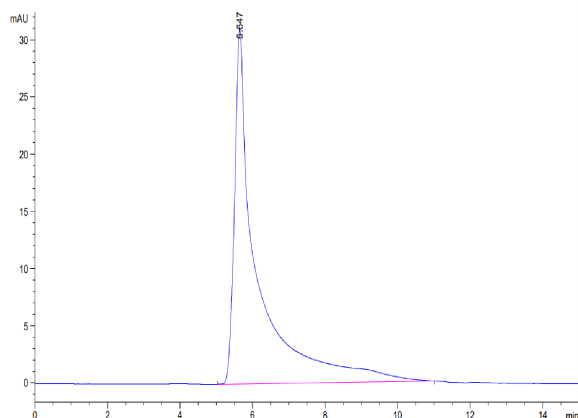
Assay Data

Bis-Tris PAGE



Mouse CCL5 on Bis-Tris PAGE under reduced condition. The purity is greater than 95%.

SEC-HPLC



The purity of Mouse CCL5 is greater than 95% as determined by SEC-HPLC.