

Cynomolgus CCR8 Protein, Ultra Low Endotoxin

Cat. No. CCR-CM308-UL

Description

Source	Recombinant Cynomolgus CCR8 Protein is expressed from HEK293 with mFc (IgG1) tag at the C-Terminus. It contains Met1-Lys35.
Accession	XP_015300839.1
Molecular Weight	The protein has a predicted MW of 29.73 kDa. Due to glycosylation, the protein migrates to 35-45 kDa based on Bis-Tris PAGE result.
Endotoxin	Less than 0.01 EU per µg by the LAL method.
Purity	> 95% as determined by Bis-Tris PAGE > 95% as determined by HPLC

Formulation and Storage

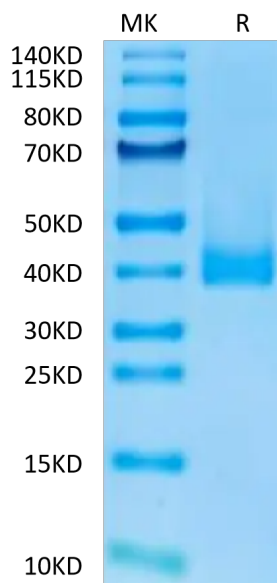
Formulation	Lyophilized from 0.22µm filtered solution in PBS (pH 7.4). Normally 8% trehalose is added as protectant before lyophilization.
Reconstitution	Dissolve the lyophilized protein in distilled water. Please refer to the Certificate of Analysis for detailed instructions.
Storage	-20 to -80°C for 12 months as supplied from date of receipt. -80°C for 3 months after reconstitution. Recommend to aliquot the protein into smaller quantities for optimal storage. Please minimize freeze-thaw cycles.

Background

CC chemokine receptor (CCR) 8 (previously called CKR-L1 or TER1 and designated CD198), which is expressed on Th2 cells and eosinophils, has been implicated in allergic diseases. CCR8 may regulate monocyte chemotaxis and thymic cell line apoptosis and is alternative coreceptor with CD4 for HIV-1 infection.

Assay Data

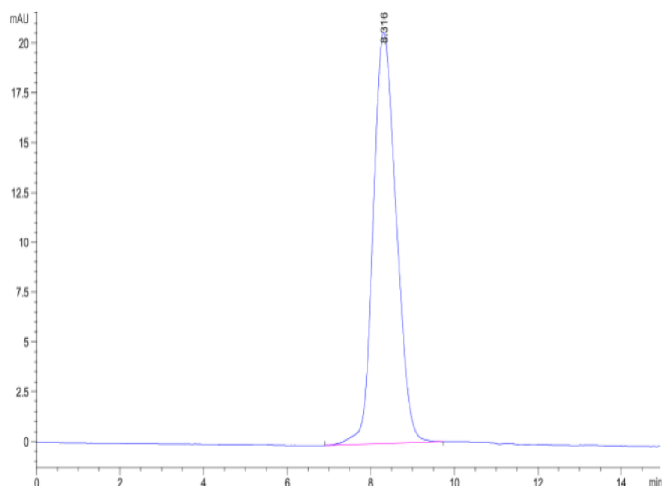
Bis-Tris PAGE



Cynomolgus CCR8 on Bis-Tris PAGE under reduced condition. The purity is greater than 95%.

SEC-HPLC

Assay Data

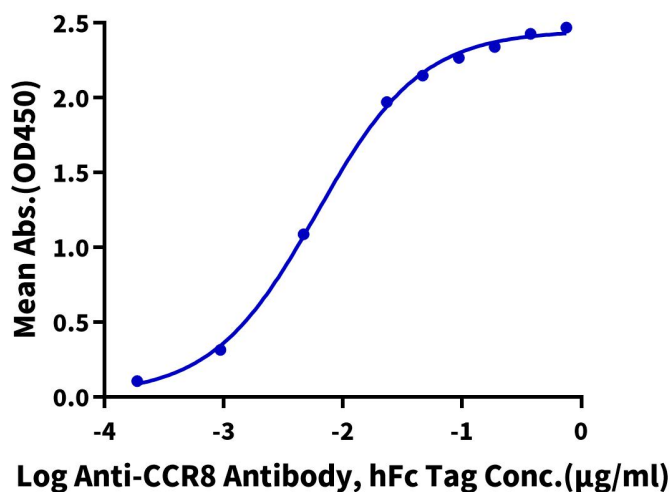


The purity of Cynomolgus CCR8 is greater than 95% as determined by SEC-HPLC.

ELISA Data

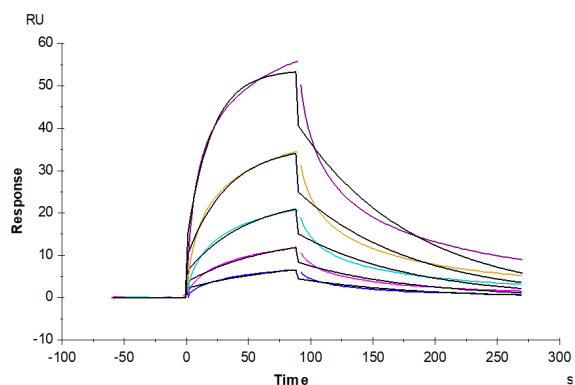
Cynomolgus CCR8, mFc Tag ELISA

0.1µg Cynomolgus CCR8, mFc Tag Per Well



Immobilized Cynomolgus CCR8, mFc Tag at 1µg/ml (100µl/well) on the plate. Dose response curve for Anti-CCR8 Antibody, hFc Tag with the EC50 of 6.1ng/ml determined by ELISA.

SPR Data



Anti-CCR8 Antibody, hFc Tag captured on CM5 Chip via Anti-Human Fc IgG Antibody can bind Cynomolgus CCR8, mFc Tag with an affinity constant of 0.27 µM as determined in SPR assay (Biacore T200).