

Human CD19 VLP

Cat. No. CD1-HM09V

Description

Source	Human CD19 VLP is expressed from HEK293. It contains Met1-Arg556 (It may have cross reaction with anti-His antibody).
Accession	P15391-1
Molecular Weight	The target protein has a predicted MW of 62.04 kDa.
Endotoxin	Less than 1 EU per µg by the LAL method.
Purity	> 95% as determined by HPLC

Formulation and Storage

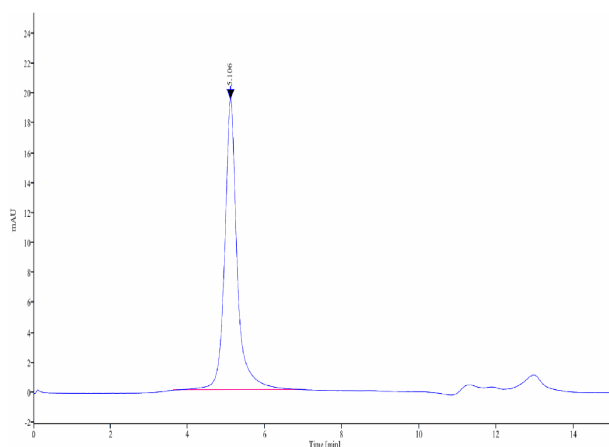
Formulation	Supplied as 0.22 µm filtered solution in PBS, 300mM L-arginine (pH 7.4). Notice: If you need it for immunization, water-soluble adjuvant is recommended.
Storage	Valid for 12 months from date of receipt when stored at -80°C. Recommend to aliquot the protein into smaller quantities for optimal storage. Please minimize freeze-thaw cycles.

Background

CD19 is a 95 kDa transmembrane glycoprotein that plays a central role in B cell activation and humoral immune responses. Functions as coreceptor for the B-cell antigen receptor complex (BCR) on B-lymphocytes. Decreases the threshold for activation of downstream signaling pathways and for triggering B-cell responses to antigens. Activates signaling pathways that lead to the activation of phosphatidylinositol 3-kinase and the mobilization of intracellular Ca² stores.

Assay Data

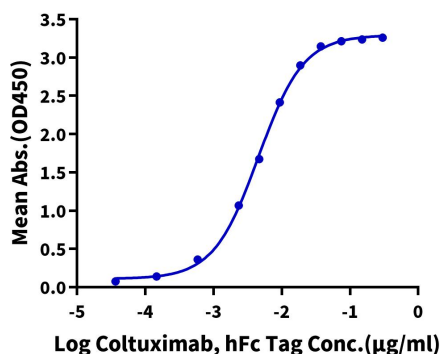
SEC-HPLC



The purity of Human CD19 VLP is greater than 95% as determined by SEC-HPLC.

ELISA Data

Human CD19 VLP ELISA
0.2µg Human CD19 VLP Per Well



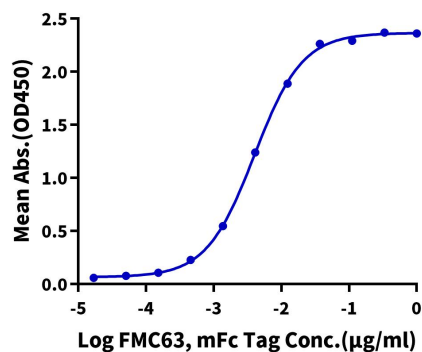
Immobilized Human CD19 VLP at 2 µg/ml (100µl/well) on the plate. Dose response curve for Coltuximab, hFc Tag with the EC₅₀ of 4.9ng/ml determined by ELISA.

Assay Data

ELISA Data

Human CD19 VLP ELISA

0.2µg Human CD19 VLP Per Well

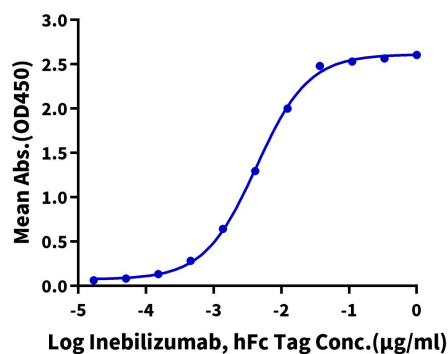


Immobilized Human CD19 VLP at 2µg/ml (100µl/well) on the plate. Dose response curve for FMC63, mFc Tag with the EC50 of 4.0/-ng/ml determined by ELISA.

ELISA Data

Human CD19 VLP ELISA

0.2µg Human CD19 VLP Per Well

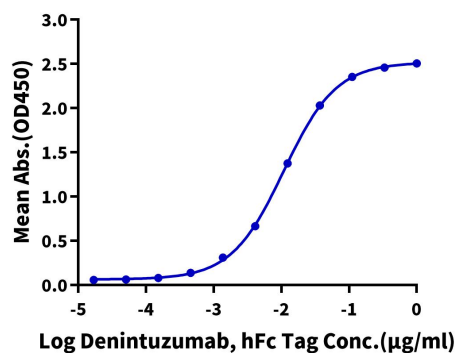


Immobilized Human CD19 VLP at 2µg/ml (100µl/well) on the plate. Dose response curve for Inebilizumab, hFc Tag with the EC50 of 4.3ng/ml determined by ELISA.

ELISA Data

Human CD19 VLP ELISA

0.2µg Human CD19 VLP Per Well



Immobilized Human CD19 VLP at 2µg/ml (100µl/well) on the plate. Dose response curve for Denintuzumab, hFc Tag with the EC50 of 10.9ng/ml determined by ELISA.