

# Cynomolgus CD200 R1/CRTR2 Protein

Cat. No. CD2-CM4R1



## Description

<b>Source</b>	Recombinant Cynomolgus CD200 R1/CRTR2 Protein is expressed from HEK293 with His tag at the C-Terminus. It contains Glu25-Leu267.
<b>Accession</b>	XP_005548207.1
<b>Molecular Weight</b>	The protein has a predicted MW of 28.09 kDa. Due to glycosylation, the protein migrates to 67-77 kDa based on Bis-Tris PAGE result.
<b>Endotoxin</b>	Less than 1EU per µg by the LAL method.
<b>Purity</b>	> 95% as determined by Bis-Tris PAGE > 95% as determined by HPLC

## Formulation and Storage

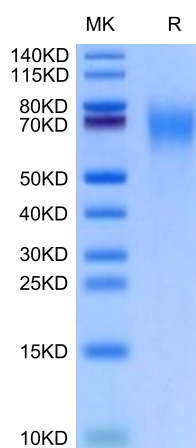
<b>Formulation</b>	Lyophilized from 0.22µm filtered solution in PBS (pH 7.4). Normally 8% trehalose is added as protectant before lyophilization.
<b>Reconstitution</b>	Centrifuge the tube before opening. Reconstituting to a concentration more than 100 µg/ml is recommended. Dissolve the lyophilized protein in distilled water.
<b>Storage</b>	-20 to -80°C for 12 months as supplied from date of receipt. -80°C for 3 months after reconstitution. Recommend to aliquot the protein into smaller quantities for optimal storage. Please minimize freeze-thaw cycles.

## Background

CD200Fc, a chimeric molecule including the extracellular domain of CD200 and a murine IgG2a Fc region, regulates immune responses following engagement of a cell surface receptor, CD200R, expressed on cells of the myeloid and T cell lineage. A recent report focused attention on a family of CD200Rs, but concluded that only one member used CD200 as its ligand.

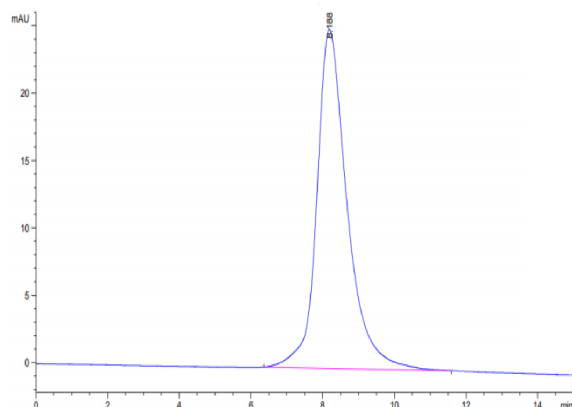
## Assay Data

### Bis-Tris PAGE



Cynomolgus CD200 R1 on Bis-Tris PAGE under reduced condition. The purity is greater than 95%.

### SEC-HPLC



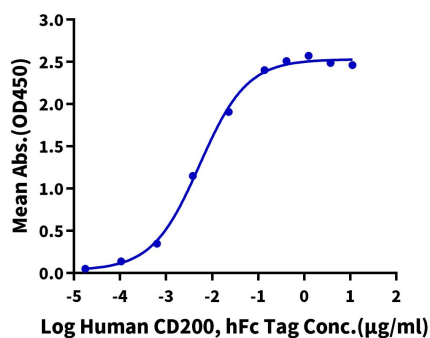
The purity of Cynomolgus CD200 R1 is greater than 95% as determined by SEC-HPLC.

Assay Data

ELISA Data

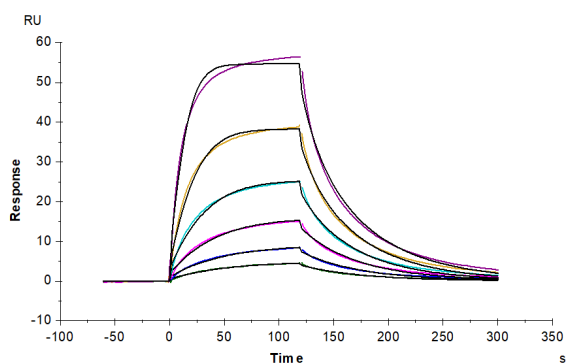
**Cynomolgus CD200 R1, His Tag ELISA**

0.1µg Cynomolgus CD200 R1, His Tag Per Well



Immobilized Cynomolgus CD200 R1, His Tag at 1µg/ml (100µl/well) on the plate. Dose response curve for Human CD200, hFc Tag with the EC50 of 5.3ng/ml determined by ELISA (QC Test).

SPR Data



Cynomolgus CD200 R1, His Tag immobilized on CM5 Chip can bind Cynomolgus CD200, His Tag with an affinity constant of 35.84 nM as determined in SPR assay (Biacore T200).