

# Biotinylated Canine CD20/MS4A1 Nanodisc

Cat. No. CD2-DM12NB

## Description

<b>Source</b>	Recombinant Biotinylated Canine CD20/MS4A1 Nanodisc is expressed from HEK293 with His tag at the C-terminus. It contains Met1-Pro297.
<b>Accession</b>	Q3C2E2
<b>Molecular Weight</b>	The protein has a predicted MW of 46.01 kDa.
<b>Endotoxin</b>	Less than 1 EU per µg by the LAL method.

## Formulation and Storage

<b>Formulation</b>	Supplied as 0.22 µm filtered solution in PBS, 200mM L-arginine (pH 7.4). Notice: Not recommended for flow cytometry in mammalian cells.
<b>Storage</b>	Valid for 6 months from date of receipt when stored at -80°C. Recommend to aliquot the protein into smaller quantities for optimal storage. Please minimize freeze-thaw cycles.

## Background

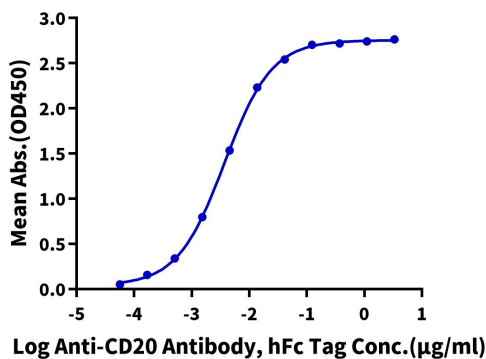
B-lymphocyte antigen CD20 or CD20 is an activated-glycosylated phosphoprotein expressed on the surface of all B-cells beginning at the pro-B phase (CD45R , CD117) and progressively increasing in concentration until maturity. CD20 is the target of the monoclonal antibodies rituximab, ocrelizumab, obinutuzumab, ofatumumab, ibritumomab tiuxetan, tositumomab, and ublituximab, which are all active agents in the treatment of all B cell lymphomas, leukemias, and B cell-mediated autoimmune diseases.

## Assay Data

### ELISA Data

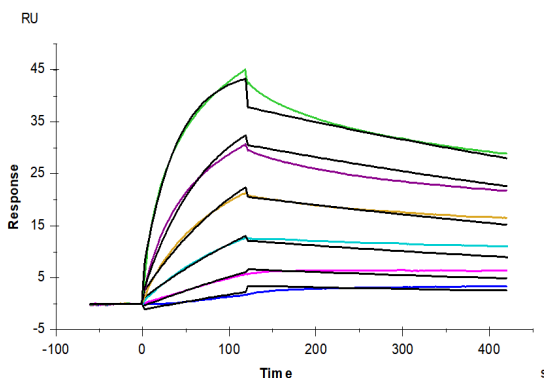
#### Biotinylated Canine CD20 Nanodisc, His Tag ELISA

0.2µg Biotinylated Canine CD20 Nanodisc, His Tag Per Well



Immobilized Biotinylated Canine CD20 Nanodisc, His Tag at 2µg/ml (100µl/well) on the streptavidin precoated plate (5µg/ml). Dose response curve for Anti-CD20 Antibody, hFc Tag with the EC50 of 3.7ng/ml determined by ELISA.

### SPR Data



Biotinylated Canine CD20 Nanodisc, His Tag captured on CM5 Chip via Streptavidin can bind Anti-CD20 Antibody, hFc Tag with an affinity constant of 1.01 nM as determined in SPR assay (Biacore S200).