

Human CD21 Protein

Cat. No. CD2-HM121

Description

Source	Recombinant Human CD21 Protein is expressed from HEK293 with His tag at the C-Terminus. It contains Ile21-Arg971.
Accession	P20023-1
Molecular Weight	The protein has a predicted MW of 105.3 kDa. Due to glycosylation, the protein migrates to 110-130 kDa based on Bis-Tris PAGE result.
Endotoxin	Less than 1EU per µg by the LAL method.
Purity	> 95% as determined by Bis-Tris PAGE > 95% as determined by HPLC

Formulation and Storage

Formulation	Supplied as 0.22µm filtered solution in PBS (pH 7.4).
Storage	Valid for 12 months from date of receipt when stored at -80°C. Recommend to aliquot the protein into smaller quantities for optimal storage. Please minimize freeze-thaw cycles.

Background

CD21 mRNA expression, an EBV-entry receptor, was transiently detected in NK cells after exosome treatment, and levels decreased after further culture. CD21 protein expression was also transiently transferred to NK cells after co-culture with an EBV-positive Burkitt lymphoma cell line (Raji) via trogocytosis. However, EBV did not infect NK cells through CD21-mediated trogocytosis.

Assay Data

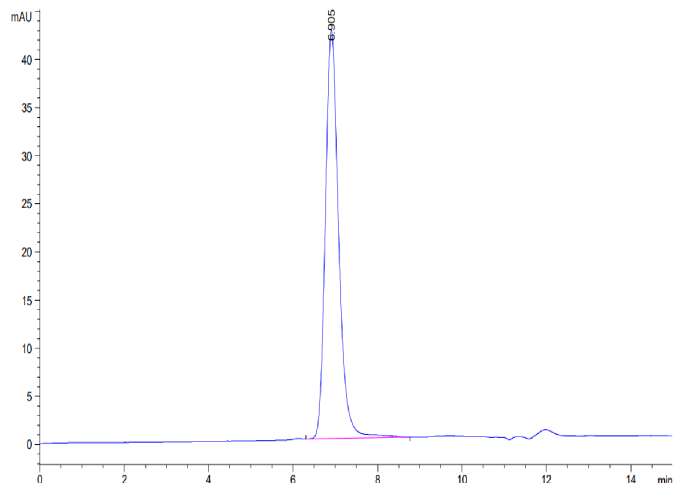
Bis-Tris PAGE



Human CD21 on Bis-Tris PAGE under reduced condition. The purity is greater than 95%.

SEC-HPLC

Assay Data

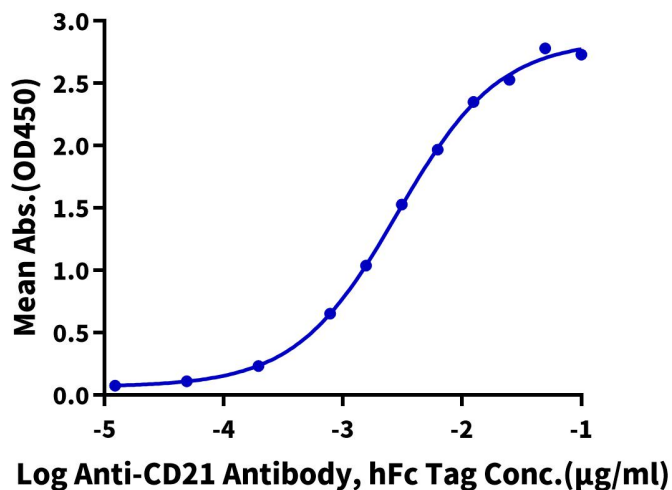


The purity of Human CD21 is greater than 95% as determined by SEC-HPLC.

ELISA Data

Human CD21, His Tag ELISA

0.1 µg Human CD21, His Tag Per Well



Immobilized Human CD21, His Tag at 1 µg/ml (100 µl/Well) on the plate. Dose response curve for Anti-CD21 Antibody, hFc Tag with the EC50 of 2.9 ng/ml determined by ELISA.