

Human CD20 Protein-VLP

Cat. No. CD2-HM122



Description

Source	Recombinant Human CD20 Protein-VLP is expressed from HEK293. It contains Met1-Pro297.
Accession	P11836-1
Molecular Weight	The target protein has a predicted MW of 34.3 kDa.
Endotoxin	Less than 1EU per µg by the LAL method.
Purity	> 95% as determined by HPLC

Formulation and Storage

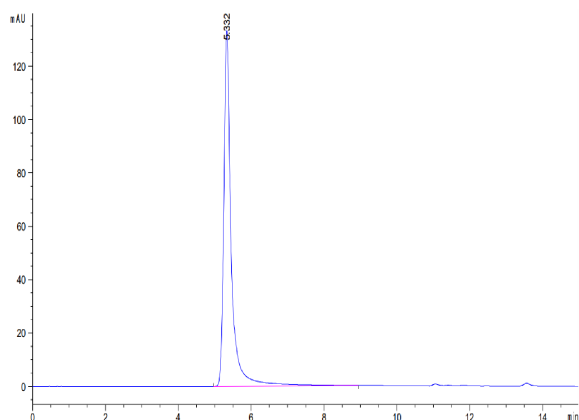
Formulation	Lyophilized from 0.22µm filtered solution in PBS, 300mM L-Arginine (pH 7.4). Normally 8% trehalose is added as protectant before lyophilization. Notice: If you need it for immunization, Do Not use any adjuvant.
Reconstitution	Centrifuge the tube before opening. Reconstituting to a concentration more than 100 µg/ml is recommended. Dissolve the lyophilized protein in distilled water.
Storage	-20°C or lower for 12 months as supplied from date of receipt. Recommend to aliquot the protein into smaller quantities for optimal storage. Please minimize freeze-thaw cycles.

Background

B-lymphocyte antigen CD20 or CD20 is an activated-glycosylated phosphoprotein expressed on the surface of all B-cells beginning at the pro-B phase (CD45R, CD117) and progressively increasing in concentration until maturity. CD20 is the target of the monoclonal antibodies rituximab, ocrelizumab, obinutuzumab, ofatumumab, ibritumomab tiuxetan, tositumomab, and ublituximab, which are all active agents in the treatment of all B cell lymphomas, leukemias, and B cell-mediated autoimmune diseases.

Assay Data

SEC-HPLC

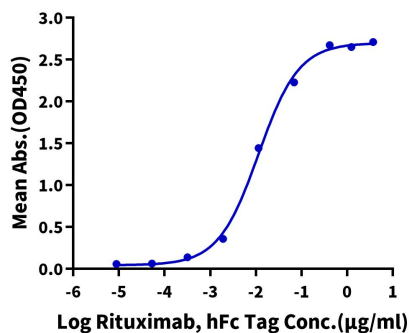


The purity of Human CD20 VLP is greater than 95% as determined by SEC-HPLC.

ELISA Data

Human CD20 VLP ELISA

0.5µg Human CD20 VLP Per Well



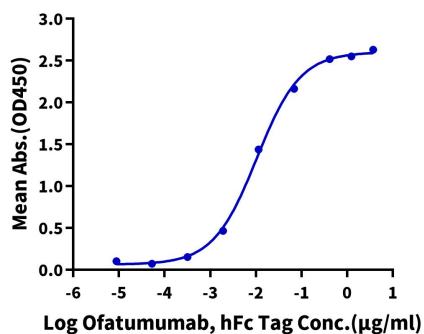
Immobilized Human CD20 VLP at 5µg/ml (100µl/Well) on plate on the plate. Dose response curve for Rituximab, hFc Tag with the EC50 of 11.4ng/ml determined by ELISA (QC Test).

Assay Data

ELISA Data

Human CD20 VLP ELISA

0.5µg Human CD20 VLP Per Well

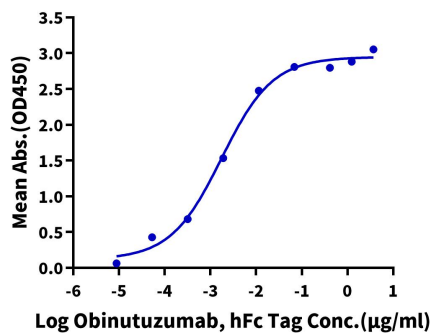


Immobilized Human CD20 VLP at 5µg/ml (100µl/Well) on plate on the plate. Dose response curve for Ofatumumab, hFc Tag with the EC50 of 10.5ng/ml determined by ELISA (QC Test).

ELISA Data

Human CD20 VLP ELISA

0.5µg Human CD20 VLP Per Well



Immobilized Human CD20 VLP at 5µg/ml (100µl/well) on the plate. Dose response curve for Obinutuzumab, hFc Tag with the EC50 of 1.7ng/ml determined by ELISA.